

# Anti-Osteocalcin antibody ab93876

★★★★☆ **7 Abreviews**   **288 References**   画像数 **2**

### 製品の概要

|              |   |
|--------------|---|
| 製品名          | Anti-Osteocalcin antibody   |
| 製品の詳細        | Rabbit polyclonal to Osteocalcin  |
| 由来種          | Rabbit  |
| アプリケーション     | <b>適用あり:</b> WB, IHC-P  |
| 種交差性         | <b>交差種:</b> Mouse, Human  |
| 免疫原          | Synthetic peptide. This information is proprietary to Abcam and/or its suppliers.   |
| ポジティブ・コントロール | IHC-P: Liver carcinoma tissue WB: Lung tissue lysate  |
| 特記事項         | <p>The Life Science industry has been in the grips of a reproducibility crisis for a number of years. Abcam is leading the way in addressing this with our range of recombinant monoclonal antibodies and knockout edited cell lines for gold-standard validation. Please check that this product meets your needs before purchasing.</p> <p>If you have any questions, special requirements or concerns, please send us an inquiry and/or contact our Support team ahead of purchase. Recommended alternatives for this product can be found below, along with publications, customer reviews and Q&amp;As</p> |

### 製品の特性

|          |   |
|----------|---|
| 製品の状態    | Liquid  |
| 保存方法     | Shipped at 4°C. Store at -20°C. Stable for 12 months at -20°C.            |
| バッファー    | pH: 7.40<br>Preservative: 0.02% Sodium azide<br>Constituents: PBS, 1% BSA |
| 精製度      | Protein A purified  |
| 特記事項(精製) | Affinity purified   |
| ポリ/モノ    | ポリクローナル   |
| アイソタイプ   | IgG   |

### アプリケーション

The Abpromise guarantee

Abpromise保証は、 次のテスト済みアプリケーションにおけるab93876の使用に適用されます

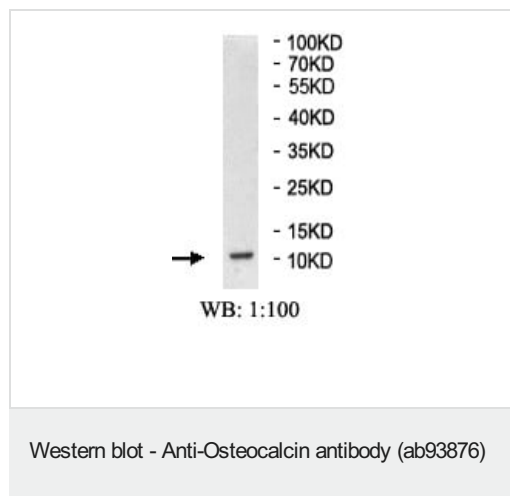
アプリケーションノートには、推奨の開始希釈率がありますが、適切な希釈率につきましてはご確認ください。

| アプリケーション | Abreviews | 特記事項   |
|----------|-----------|--|
| WB       |           | Use at an assay dependent concentration. Predicted molecular weight: 11 kDa. |
| IHC-P    | ★★★★★ (3) | Use at an assay dependent concentration.                                     |

## ターゲット情報

|       |   |
|-------|---|
| 機能    | Constitutes 1-2% of the total bone protein. It binds strongly to apatite and calcium.   |
| 配列類似性 | Belongs to the osteocalcin/matrix Gla protein family.<br>Contains 1 Gla (gamma-carboxy-glutamate) domain.                                 |
| 翻訳後修飾 | Gamma-carboxyglutamate residues are formed by vitamin K dependent carboxylation. These residues are essential for the binding of calcium. |
| 細胞内局在 | Secreted.   |

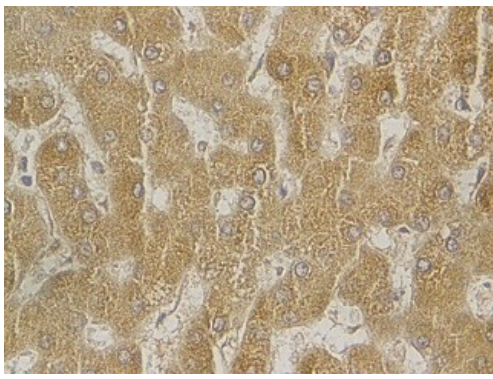
## 画像



Anti-Osteocalcin antibody (ab93876) at 1/100 dilution + Mouse lung tissue lysate

**Predicted band size:** 11 kDa

Western blot analysis of mouse lung tissue lysate with anti-osteocalcin antibody.



Immunohistochemical staining of formalin-fixed paraffin-embedded liver carcinoma staining with anti-osteocalcin antibody at a dilution of 1/100.

Immunohistochemistry (Formalin/PFA-fixed paraffin-embedded sections) - Anti-Osteocalcin antibody (ab93876)

**Please note:** All products are "FOR RESEARCH USE ONLY. NOT FOR USE IN DIAGNOSTIC PROCEDURES"

#### Our Abpromise to you: Quality guaranteed and expert technical support

---

- Replacement or refund for products not performing as stated on the datasheet
- Valid for 12 months from date of delivery
- Response to your inquiry within 24 hours
- We provide support in Chinese, English, French, German, Japanese and Spanish
- Extensive multi-media technical resources to help you
- We investigate all quality concerns to ensure our products perform to the highest standards

If the product does not perform as described on this datasheet, we will offer a refund or replacement. For full details of the Abpromise, please visit <https://www.abcam.co.jp/abpromise> or contact our technical team.

#### Terms and conditions

---

- Guarantee only valid for products bought direct from Abcam or one of our authorized distributors