

# Anti-ORP150 antibody [EP5891] ab134944

RabMAb

★★★★★ **1 Abreviews** **5 References** 画像数 6

### 製品の概要

製品名	Anti-ORP150 antibody [EP5891]
製品の詳細	Rabbit monoclonal [EP5891] to ORP150
由来種	Rabbit
アプリケーション	<b>適用あり:</b> Flow Cyt (Intra), IP, ICC/IF, WB, IHC-P
種交差性	<b>交差種:</b> Human
免疫原	Synthetic peptide within Human ORP150 aa 950-1050 (C terminal). The exact sequence is proprietary.
ポジティブ・コントロール	Human colon and liver tissues; MCF7 cells; 293T, HeLa, HepG2, MCF7 and SH-SY5Y cell lysates IP: HeLa whole cell lysate.
特記事項	<p>Our RabMAb<sup>®</sup> technology is a patented hybridoma-based technology for making rabbit monoclonal antibodies. For details on our patents, please refer to <a href="#">RabMAb<sup>®</sup> patents</a>.</p> <p>The Life Science industry has been in the grips of a reproducibility crisis for a number of years. Abcam is leading the way in addressing this with our range of recombinant monoclonal antibodies and knockout edited cell lines for gold-standard validation. Please check that this product meets your needs before purchasing.</p> <p>If you have any questions, special requirements or concerns, please send us an inquiry and/or contact our Support team ahead of purchase. Recommended alternatives for this product can be found below, along with publications, customer reviews and Q&amp;As</p> <p>Mouse, Rat: We have preliminary internal testing data to indicate this antibody may not react with these species. Please contact us for more information.</p>

### 製品の特性

製品の状態	Liquid
保存方法	Shipped at 4°C. Store at -20°C.
バッファー	<p>pH: 7.2</p> <p>Preservative: 0.01% Sodium azide</p> <p>Constituents: 9% PBS, 40% Glycerol (glycerin, glycerine), 0.05% BSA, 50% Tissue culture supernatant</p>

精製度	Tissue culture supernatant
ポリ/モノ	モノクローナル
クローン名	EP5891
アイソタイプ	IgG

アプリケーション

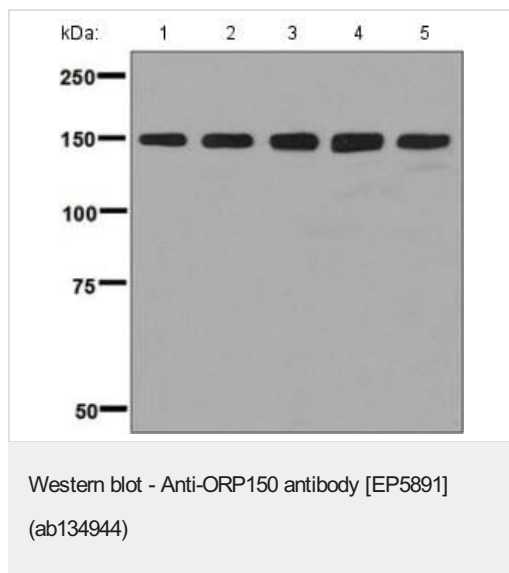
The Abpromise guarantee      Abpromise保証は、次のテスト済みアプリケーションにおけるab134944の使用に適用されます  
 アプリケーションノートには、推奨の開始希釈率がありますが、適切な希釈率につきましてはご確認ください。

アプリケーション	Abreviews	特記事項
Flow Cyt (Intra)		Use at an assay dependent concentration.
IP		1/10 - 1/100.
ICC/IF		1/250 - 1/500.
WB	★★★★★ (1)	1/1000 - 1/10000. Predicted molecular weight: 111 kDa.
IHC-P		1/250 - 1/500. Perform heat mediated antigen retrieval with citrate buffer pH 6 before commencing with IHC staining protocol.

ターゲット情報

機能	Has a pivotal role in cytoprotective cellular mechanisms triggered by oxygen deprivation. May play a role as a molecular chaperone and participate in protein folding.
組織特異性	Highly expressed in tissues that contain well-developed endoplasmic reticulum and synthesize large amounts of secretory proteins. Highly expressed in liver and pancreas and lower expression in brain and kidney. Also expressed in macrophages within aortic atherosclerotic plaques, and in breast cancers.
配列類似性	Belongs to the heat shock protein 70 family.
細胞内局在	Endoplasmic reticulum lumen.

画像



**All lanes :** Anti-ORP150 antibody [EP5891] (ab134944) at 1/5000 dilution

**Lane 1 :** HeLa cell lysate

**Lane 2 :** SH-SY5Y cell lysate

**Lane 3 :** MCF7 cell lysate

**Lane 4 :** HepG2 cell lysate

**Lane 5 :** 293T cell lysate

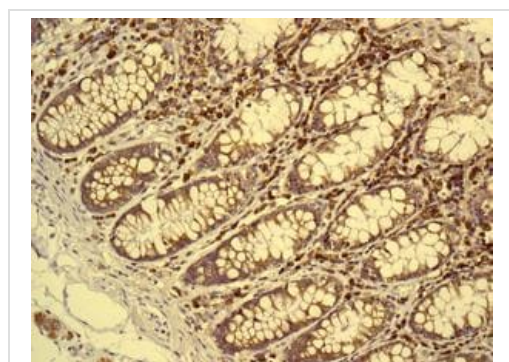
Lysates/proteins at 10 µg per lane.

### Secondary

**All lanes :** Standard HRP labelled goat anti-rabbit at 1/2000 dilution

Developed using the ECL technique.

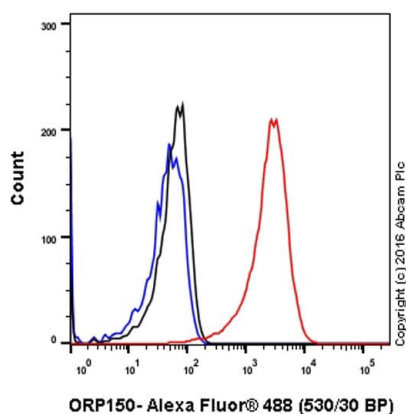
**Predicted band size:** 111 kDa



Immunohistochemistry (Formalin/PFA-fixed paraffin-embedded sections) - Anti-ORP150 antibody [EP5891] (ab134944)

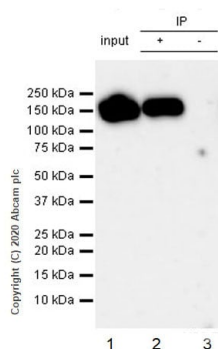
Immunohistochemical analysis of paraffin-embedded, formalin-fixed Human colon tissue, labelling ORP150 using ab134944 at a 1/250 dilution.

Perform heat mediated antigen retrieval with citrate buffer pH 6 before commencing with IHC staining protocol.



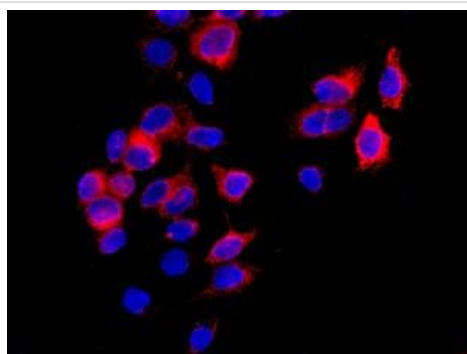
Flow Cytometry (Intracellular) - Anti-ORP150 antibody [EP5891] (ab134944)

Intracellular Flow Cytometry analysis of MCF-7 (human breast carcinoma) cells labeling ORP150 with unpurified ab134944 at 1/20 dilution (10ug/ml) (red). Cells were fixed with 4% paraformaldehyde and permeabilised with 90% methanol. A Goat anti rabbit IgG (Alexa Fluor® 488) (1/2000 dilution) was used as the secondary antibody. Rabbit monoclonal IgG (Black) was used as the isotype control, cells without incubation with primary antibody and secondary antibody (Blue) were used as the unlabeled control.



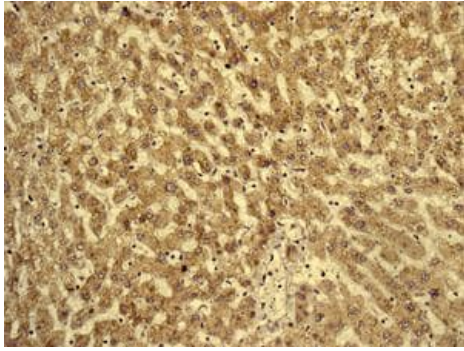
Immunoprecipitation - Anti-ORP150 antibody [EP5891] (ab134944)

purified ab134944 at 1/50 dilution (2µg) immunoprecipitating ORP150 in HeLa whole cell lysate.  
 Lane 1 (input): HeLa (Human cervix adenocarcinoma epithelial cell) whole cell lysate 10µg  
 Lane 2 (+): ab134944 + HeLa whole cell lysate.  
 Lane 3 (-): Rabbit monoclonal IgG (**ab172730**) instead of ab134944 in HeLa whole cell lysate.  
 VeriBlot for IP Detection Reagent (HRP) (**ab131366**) (1/2000 dilution) was used for Western blotting.  
 Blocking Buffer and concentration: 5% NFDm/TBST.  
 Diluting buffer and concentration: 5% NFDm/TBST.  
 Observed band size: 150 kDa



Immunocytochemistry/ Immunofluorescence - Anti-ORP150 antibody [EP5891] (ab134944)

Immunofluorescence staining of MCF7 cells, labelling ORP150 using ab134944 at a 1/250 dilution (red). Cell nuclei are shown in blue.



Immunohistochemistry (Formalin/PFA-fixed paraffin-embedded sections) - Anti-ORP150 antibody [EP5891] (ab134944)

Immunohistochemical analysis of paraffin-embedded, formalin-fixed Human liver tissue, labelling ORP150 using ab134944 at a 1/250 dilution.

Perform heat mediated antigen retrieval with citrate buffer pH 6 before commencing with IHC staining protocol.

**Please note:** All products are "FOR RESEARCH USE ONLY. NOT FOR USE IN DIAGNOSTIC PROCEDURES"

### Our Abpromise to you: Quality guaranteed and expert technical support

---

- Replacement or refund for products not performing as stated on the datasheet
- Valid for 12 months from date of delivery
- Response to your inquiry within 24 hours
- We provide support in Chinese, English, French, German, Japanese and Spanish
- Extensive multi-media technical resources to help you
- We investigate all quality concerns to ensure our products perform to the highest standards

If the product does not perform as described on this datasheet, we will offer a refund or replacement. For full details of the Abpromise, please visit <https://www.abcam.co.jp/abpromise> or contact our technical team.

### Terms and conditions

---

- Guarantee only valid for products bought direct from Abcam or one of our authorized distributors