

Anti-ORC6L antibody ab88686

1 References [画像数 4](#)

製品の概要

| | |
|--------------|---|
| 製品名 | Anti-ORC6L antibody |
| 製品の詳細 | Mouse polyclonal to ORC6L |
| 由来種 | Mouse |
| アプリケーション | 適用あり: WB, IHC-P, ICC/IF |
| 種交差性 | 交差種: Human |
| 免疫原 | Recombinant full length protein within Human ORC6L. The exact immunogen sequence used to generate this antibody is proprietary information. If additional detail on the immunogen is needed to determine the suitability of the antibody for your needs, please <u>contact</u> our Scientific Support team to discuss your requirements. |
| ポジティブ・コントロール | Human pancreas tissue lysate. Cell lysate from transfected 293T cells. Human placenta. HeLa cells. |
| 特記事項 | <p>The Life Science industry has been in the grips of a reproducibility crisis for a number of years. Abcam is leading the way in addressing this with our range of recombinant monoclonal antibodies and knockout edited cell lines for gold-standard validation. Please check that this product meets your needs before purchasing.</p> <p>If you have any questions, special requirements or concerns, please send us an inquiry and/or contact our Support team ahead of purchase. Recommended alternatives for this product can be found below, along with publications, customer reviews and Q&As</p> |

製品の特性

| | |
|--------|---|
| 製品の状態 | Liquid |
| 保存方法 | Shipped at 4°C. Upon delivery aliquot and store at -20°C or -80°C. Avoid repeated freeze / thaw cycles. |
| バッファー | pH: 7.4 Constituent: PBS |
| 精製度 | Protein A purified |
| ポリ/モノ | ポリクローナル |
| アイソタイプ | IgG |

アプリケーション

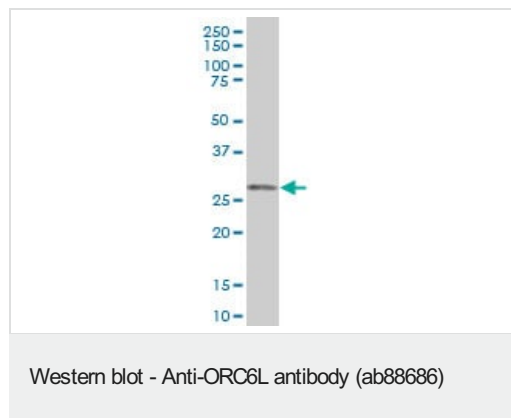
The Abpromise guarantee Abpromise保証は、 次のテスト済みアプリケーションにおけるab88686の使用に適用されます
アプリケーションノートには、推奨の開始希釈率がありますが、適切な希釈率につきましてはご確認ください。

| アプリケーション | Abreviews | 特記事項 |
|----------|-----------|--|
| WB | | Use a concentration of 1 µg/ml. Detects a band of approximately 28 kDa (predicted molecular weight: 28 kDa). |
| IHC-P | | Use a concentration of 3 µg/ml. Antigen retrieval is not essential but may optimise staining. |
| ICC/IF | | Use a concentration of 10 µg/ml. |

ターゲット情報

| | |
|-------|---|
| 機能 | Component of the origin recognition complex (ORC) that binds origins of replication. DNA-binding is ATP-dependent, however specific DNA sequences that define origins of replication have not been identified so far. ORC is required to assemble the pre-replication complex necessary to initiate DNA replication. |
| 関連疾患 | Defects in ORC6 are the cause of Meier-Gorlin syndrome type 3 (MGORS3) [MIM:613803]. MGORS3 is a syndrome characterized by bilateral microtia, aplasia/hypoplasia of the patellae, and severe intrauterine and postnatal growth retardation with short stature and poor weight gain. Additional clinical findings include anomalies of cranial sutures, microcephaly, apparently low-set and simple ears, microstomia, full lips, highly arched or cleft palate, micrognathia, genitourinary tract anomalies, and various skeletal anomalies. While almost all cases have primordial dwarfism with substantial prenatal and postnatal growth retardation, not all cases have microcephaly, and microtia and absent/hypoplastic patella are absent in some. Despite the presence of microcephaly, intellect is usually normal. |
| 配列類似性 | Belongs to the ORC6 family. |
| 翻訳後修飾 | Phosphorylated upon DNA damage, probably by ATM or ATR. |
| 細胞内局在 | Nucleus. |

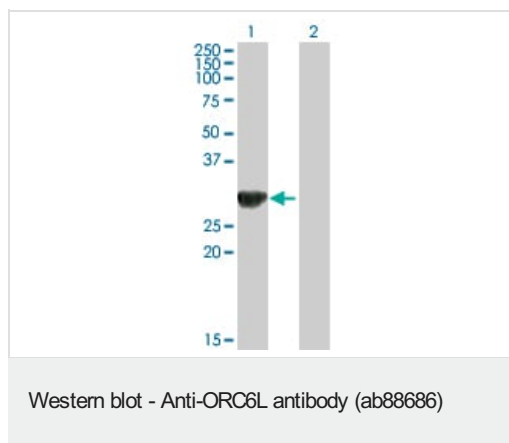
画像



Anti-ORC6L antibody (ab88686) at 1 µg/ml + Human pancreas tissue lysate at 50 µg

Predicted band size: 28 kDa

Observed band size: 28 kDa



All lanes : Anti-ORC6L antibody (ab88686) at 1 µg/ml

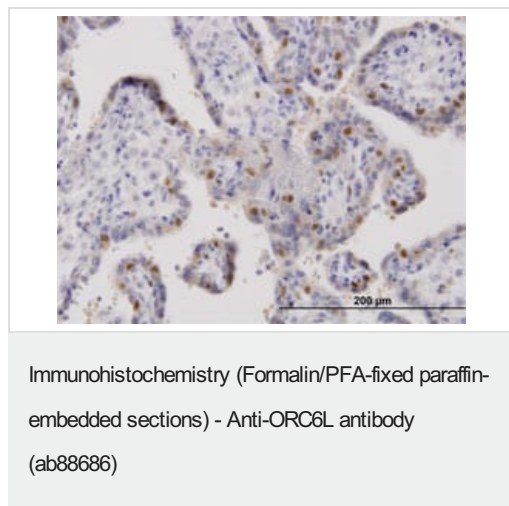
Lane 1 : cell lysate from ORC6L transfected 293T cells

Lane 2 : cell lysate from non transfected 293T cells

Lysates/proteins at 25 µg per lane.

Predicted band size: 28 kDa

Observed band size: 28 kDa



ab88686 at 3 µg/ml detecting ORC6L in formalin-fixed paraffin-embedded Human placenta by immunohistochemistry.



ab88686 at 10 µg/ml detecting ORC6L in paraformaldehyde fixed, permeabilised HeLa cells by immunofluorescence.

Please note: All products are "FOR RESEARCH USE ONLY. NOT FOR USE IN DIAGNOSTIC PROCEDURES"

Our Abpromise to you: Quality guaranteed and expert technical support

- Replacement or refund for products not performing as stated on the datasheet
- Valid for 12 months from date of delivery
- Response to your inquiry within 24 hours
- We provide support in Chinese, English, French, German, Japanese and Spanish

- Extensive multi-media technical resources to help you
- We investigate all quality concerns to ensure our products perform to the highest standards

If the product does not perform as described on this datasheet, we will offer a refund or replacement. For full details of the Abpromise, please visit <https://www.abcam.co.jp/abpromise> or contact our technical team.

Terms and conditions

- Guarantee only valid for products bought direct from Abcam or one of our authorized distributors