


Anti-NXF1 antibody [EPR8010] - BSA and Azide free ab248328

リコンビナント **RabMAb**

画像数 3

製品の概要

製品名	Anti-NXF1 antibody [EPR8010] - BSA and Azide free
製品の詳細	Rabbit monoclonal [EPR8010] to NXF1 - BSA and Azide free
由来種	Rabbit
アプリケーション	<p>適用あり: WB</p> <p>適用なし: Flow Cyt, ICC/IF, IHC-P or IP</p>
種交差性	<p>交差種: Human</p> <p>交差が予測される動物種: Mouse, Rat </p>
免疫原	Synthetic peptide. This information is proprietary to Abcam and/or its suppliers.
特記事項	<p>ab248328 is the carrier-free version of ab129171.</p> <p>Our carrier-free antibodies are typically supplied in a PBS-only formulation, purified and free of BSA, sodium azide and glycerol. The carrier-free buffer and high concentration allow for increased conjugation efficiency.</p> <p>This conjugation-ready format is designed for use with fluorochromes, metal isotopes, oligonucleotides, and enzymes, which makes them ideal for antibody labelling, functional and cell-based assays, flow-based assays (e.g. mass cytometry) and Multiplex Imaging applications.</p> <p>Use our conjugation kits for antibody conjugates that are ready-to-use in as little as 20 minutes with <1 minute hands-on-time and 100% antibody recovery: available for fluorescent dyes, HRP, biotin and gold.</p> <p>This product is compatible with the Maxpar[®] Antibody Labeling Kit from Fluidigm, without the need for antibody preparation. Maxpar[®] is a trademark of Fluidigm Canada Inc.</p> <p>This product is a recombinant monoclonal antibody, which offers several advantages including:</p> <ul style="list-style-type: none"> - High batch-to-batch consistency and reproducibility - Improved sensitivity and specificity - Long-term security of supply - Animal-free production <p>For more information see here.</p> <p>Our RabMAb[®] technology is a patented hybridoma-based technology for making rabbit monoclonal antibodies. For details on our patents, please refer to RabMAb[®] patents.</p>

製品の特性

製品の状態

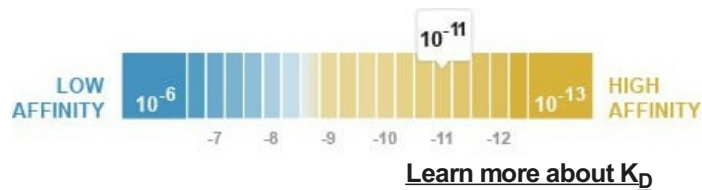
Liquid

保存方法

Shipped at 4°C. Store at +4°C. Do Not Freeze.

解離定数 (K_D 値)

$K_D = 4.70 \times 10^{-11}$ M



バッファー

pH: 7.2

Constituent: PBS

キャリア・フリー

はい

精製度

Protein A purified

ポリモノ

モノクローナル

クローン名

EPR8010

アイソタイプ

IgG

アプリケーション

The Abpromise guarantee

Abpromise保証は、 次のテスト済みアプリケーションにおけるab248328の使用に適用されます

アプリケーションノートには、推奨の開始希釈率がありますが、適切な希釈率につきましてはご検討ください。

アプリケーション	Abreviews	特記事項
WB		Use at an assay dependent concentration. Predicted molecular weight: 70 kDa.

追加情報

Is unsuitable for Flow Cyt, ICC/IF, IHC-P or IP.

ターゲット情報

機能

Involved in the nuclear export of mRNA species bearing retroviral constitutive transport elements (CTE) and in the export of mRNA from the nucleus to the cytoplasm. The NXF1-NXT1 heterodimer is involved in the export of HSP70 mRNA in conjunction with THOC4 and THOC5.

組織特異性

Expressed ubiquitously.

配列類似性

Belongs to the NXF family.

Contains 4 LRR (leucine-rich) repeats.

Contains 1 NTF2 domain.

Contains 1 RRM (RNA recognition motif) domain.

Contains 1 TAP-C domain.

ドメイン

The minimal CTE binding domain consists of an RNP-type RNA binding domain (RBD) and leucine-rich repeats.

The nucleoporin binding domain consists of a NTF2 domain (also called NTF2-like domain) and a TAP-C domain (also called UBA-like domain). It has 2 nucleoporin-FG-repeats binding sites (one in the NTF2 and the other in the TAP-C domain) which contribute to nucleoporin association and

act synergistically to export cellular mRNAs.

The NTF2 domain is functional only in the presence of NXT1 and is essential for the export of mRNA from the nucleus.

The TAP-C domain mediates direct interactions with nucleoporin-FG-repeats and is necessary and sufficient for localization of NXF1 to the nuclear rim. The conserved loop 594-NWD-596 of the TAP-C domain has a critical role in the interaction with nucleoporins.

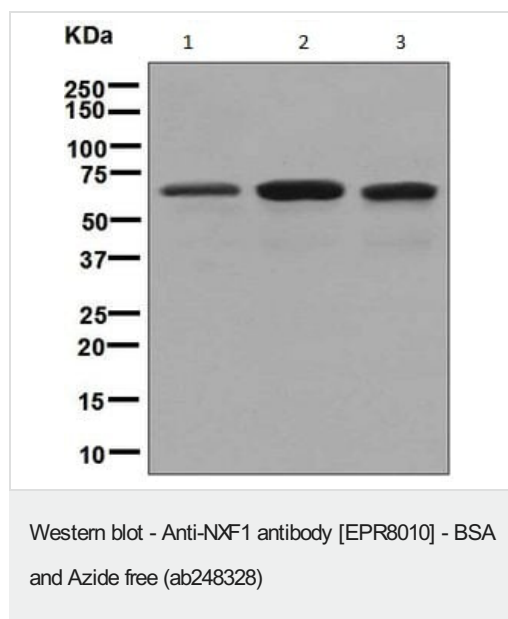
The leucine-rich repeats are essential for the export of mRNA from the nucleus.

The RNA-binding domain is a non-canonical RNP-type domain.

細胞内局在

Nucleus > nucleoplasm. Nucleus speckle. Cytoplasm. Localized predominantly in the nucleoplasm and at both the nucleoplasmic and cytoplasmic faces of the nuclear pore complex. Shuttles between the nucleus and the cytoplasm. Travels to the cytoplasm as part of the exon junction complex (EJC) bound to mRNA.

画像



All lanes : Anti-NXF1 antibody [EPR8010] ([ab129171](#)) at 1/1000 dilution

Lane 1 : K562 cell lysates

Lane 2 : HeLa cell lysates

Lane 3 : 293T cell lysates

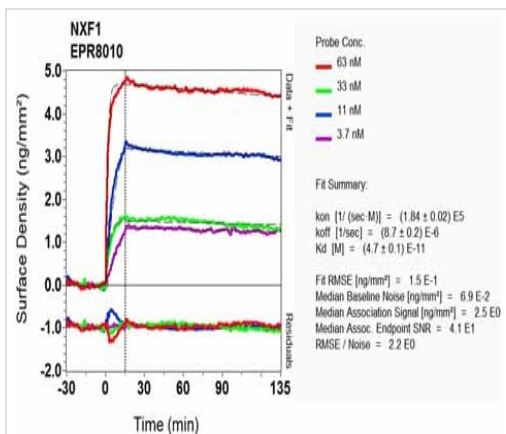
Lysates/proteins at 10 µg per lane.

Secondary

All lanes : HRP labelled Goat anti-Rabbit IgG at 1/2000 dilution

Predicted band size: 70 kDa

This data was developed using [ab129171](#), the same antibody clone in a different buffer formulation.



SPR Scanning - Anti-NXF1 antibody [EPR8010] -
BSA and Azide free (ab248328)

This data was developed using [ab129171](#), the same antibody clone in a different buffer formulation. Equilibrium dissociation constant (K_D)

Learn more about K_D

[Click here to learn more about \$K_D\$](#)

Why choose a recombinant antibody?



Research with confidence
Consistent and reproducible results



Long-term and scalable supply
Recombinant technology



Success from the first experiment
Confirmed specificity



Ethical standards compliant
Animal-free production

Anti-NXF1 antibody [EPR8010] - BSA and Azide free
(ab248328)

Please note: All products are "FOR RESEARCH USE ONLY. NOT FOR USE IN DIAGNOSTIC PROCEDURES"

Our Abpromise to you: Quality guaranteed and expert technical support

- Replacement or refund for products not performing as stated on the datasheet
- Valid for 12 months from date of delivery
- Response to your inquiry within 24 hours
- We provide support in Chinese, English, French, German, Japanese and Spanish
- Extensive multi-media technical resources to help you
- We investigate all quality concerns to ensure our products perform to the highest standards

If the product does not perform as described on this datasheet, we will offer a refund or replacement. For full details of the Abpromise, please visit <https://www.abcam.co.jp/abpromise> or contact our technical team.

Terms and conditions

- Guarantee only valid for products bought direct from Abcam or one of our authorized distributors