

Anti-Nup107 antibody [EPR22877-21] ab236634

リコンビナント **RabMAb**

画像数 4

製品の概要

製品名	Anti-Nup107 antibody [EPR22877-21]
製品の詳細	Rabbit monoclonal [EPR22877-21] to Nup107
由来種	Rabbit
アプリケーション	適用あり: WB, IP 適用なし: Flow Cyt, ICC/IF or IHC-P
種交差性	交差種: Mouse, Rat, Human
免疫原	Recombinant fragment. This information is proprietary to Abcam and/or its suppliers.
ポジティブ・コントロール	WB: PC-12, RAW 264.7, NIH/3T3, HepG2, HEK-293T and HeLa whole cell lysates. IP: HEK-293T whole cell lysate.
特記事項	<p>This product is a recombinant monoclonal antibody, which offers several advantages including:</p> <ul style="list-style-type: none"> - High batch-to-batch consistency and reproducibility - Improved sensitivity and specificity - Long-term security of supply - Animal-free production <p>For more information see here.</p> <p>Our RabMAb[®] technology is a patented hybridoma-based technology for making rabbit monoclonal antibodies. For details on our patents, please refer to RabMAb[®] patents.</p>

製品の特性

製品の状態	Liquid
保存方法	Shipped at 4°C. Store at +4°C short term (1-2 weeks). Upon delivery aliquot. Store at -20°C long term. Avoid freeze / thaw cycle.
バッファー	pH: 7.2 Preservative: 0.01% Sodium azide Constituents: PBS, 40% Glycerol (glycerin, glycerine), 0.05% BSA
精製度	Protein A purified
ポリ/モノ	モノクローナル
クローン名	EPR22877-21

アプリケーション

The Abpromise guarantee

Abpromise保証は、次のテスト済みアプリケーションにおけるab236634の使用に適用されます

アプリケーションノートには、推奨の開始希釈率がありますが、適切な希釈率につきましてはご検討ください。

アプリケーション	Abreviews	特記事項
WB		1/1000. Detects a band of approximately 107 kDa (predicted molecular weight: 106 kDa).
IP		1/30.

追加情報

Is unsuitable for Flow Cyt, ICC/IF or IHC-P.

ターゲット情報

機能

Plays a role in the nuclear pore complex (NPC) assembly and/or maintenance. Required for the assembly of peripheral proteins into the NPC. May anchor NUP62 to the NPC.

組織特異性

Ubiquitously expressed in fetal and adult tissues.

関連疾患

Nephrotic syndrome 11

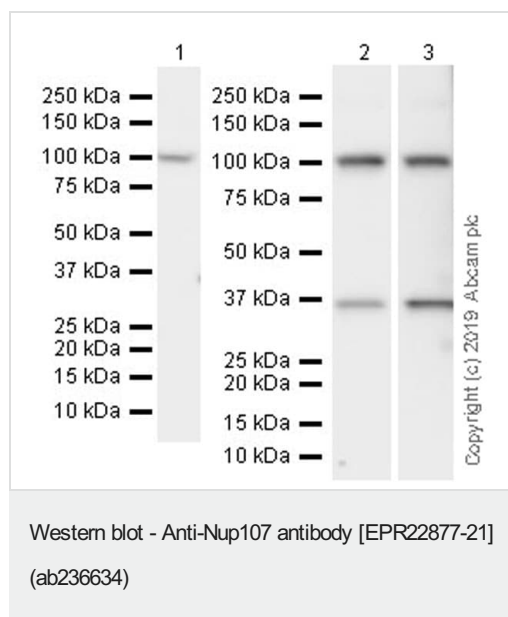
配列類似性

Belongs to the nucleoporin Nup84/Nup107 family.

細胞内局在

Nucleus membrane. Nucleus, nuclear pore complex. Chromosome, centromere, kinetochore. Located on both the cytoplasmic and nuclear sides of the NPC core structure (PubMed:11564755). During mitosis, localizes to the kinetochores (PubMed:11564755). Dissociates from the disassembled NPC structure late during prophase of mitosis (PubMed:11564755).

画像



All lanes : Anti-Nup107 antibody [EPR22877-21] (ab236634) at 1/1000 dilution (Purified)

Lane 1 : PC-12 (rat adrenal gland pheochromocytoma), whole cell lysate

Lane 2 : RAW264.7 (mouse Abelson murine leukemia virus-induced tumor macrophage), whole cell lysate

Lane 3 : NIH/3T3 (mouse embryonic fibroblast), whole cell lysate

Lysates/proteins at 20 µg per lane.

Secondary

All lanes : Goat Anti-Rabbit IgG H&L (HRP) (**ab97051**) at 1/100000 dilution

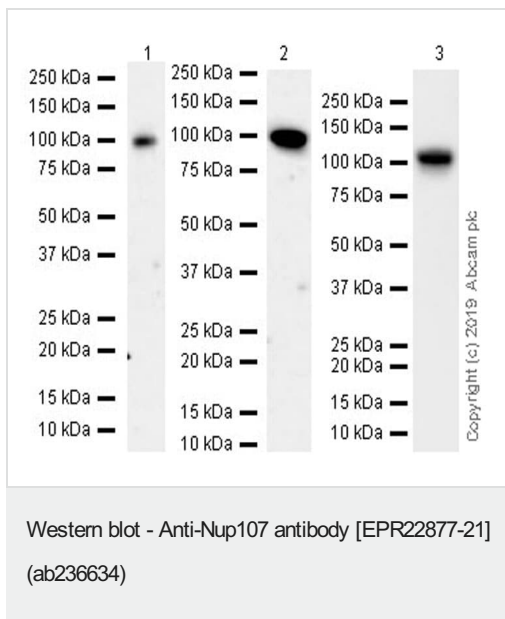
Predicted band size: 106 kDa

Observed band size: 107 kDa

Exposure time: 15 seconds

This antibody reacts with an unidentifiable protein around 37 kDa.

Blocking and dilution buffer: 5% NFDM/TBST.



All lanes : Anti-Nup107 antibody [EPR22877-21] (ab236634) at 1/1000 dilution (Purified)

Lane 1 : HepG2 (human hepatocellular carcinoma epithelial cell), whole cell lysate at 10 µg

Lane 2 : 293T (human embryonic kidney epithelial cell), whole cell lysate at 10 µg

Lane 3 : HeLa (human cervix adenocarcinoma epithelial cell), whole cell lysate at 20 µg

Secondary

All lanes : Goat Anti-Rabbit IgG H&L (HRP) ([ab97051](#)) at 1/100000 dilution

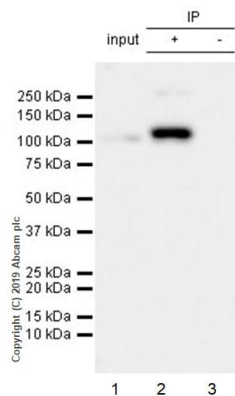
Predicted band size: 106 kDa

Observed band size: 107 kDa

Blocking and dilution buffer: 5% NFDM/TBST.

Exposure times:

Lanes 1-2: 3 minutes; Lane 3: 15 seconds.



Immunoprecipitation - Anti-Nup107 antibody
[EPR22877-21] (ab236634)

Nup107 was immunoprecipitated from 0.35 mg HEK-293T (human embryonic kidney epithelial cell) whole cell lysate 10ug with ab236634 at 1/30 dilution (2ug in 0.35mg lysates). Western blot was performed on the immunoprecipitate using ab236634. VeriBlot for IP Detection Reagent (HRP) ([ab131366](#)) was used at 1/5000 dilution.

Lane 1: HEK-293T (human embryonic kidney epithelial cell) whole cell lysate 10ug

Lane 2: ab236634 IP in HEK-293T whole cell lysate

Lane 3: Rabbit monoclonal IgG ([ab172730](#)) instead of ab236634 in HEK-293T whole cell lysate.

Blocking and dilution buffer and concentration/ 5% NFDM/TBST.

Exposure time: 6 seconds

Why choose a recombinant antibody?



Research with confidence
Consistent and reproducible results



Long-term and scalable supply
Recombinant technology



Success from the first experiment
Confirmed specificity



Ethical standards compliant
Animal-free production

Anti-Nup107 antibody [EPR22877-21] (ab236634)

Please note: All products are "FOR RESEARCH USE ONLY. NOT FOR USE IN DIAGNOSTIC PROCEDURES"

Our Abpromise to you: Quality guaranteed and expert technical support

- Replacement or refund for products not performing as stated on the datasheet

- Valid for 12 months from date of delivery
- Response to your inquiry within 24 hours
- We provide support in Chinese, English, French, German, Japanese and Spanish
- Extensive multi-media technical resources to help you
- We investigate all quality concerns to ensure our products perform to the highest standards

If the product does not perform as described on this datasheet, we will offer a refund or replacement. For full details of the Abpromise, please visit <https://www.abcam.co.jp/abpromise> or contact our technical team.

Terms and conditions

- Guarantee only valid for products bought direct from Abcam or one of our authorized distributors