


Anti-Nucleoside-diphosphate kinase antibody ab228609

画像 2

医薬用外劇物

製品の概要

製品名	Anti-Nucleoside-diphosphate kinase antibody
製品の詳細	Rabbit polyclonal to Nucleoside-diphosphate kinase
由来種	Rabbit
アプリケーション	適用あり: WB, ICC/IF
種交差性	交差種: Mouse, Human 交差が予測される動物種: Rat, Chicken, Cow, Rhesus monkey 
免疫原	Recombinant fragment within Human Nucleoside-diphosphate kinase (internal sequence). The exact sequence is proprietary. Database link: P30085
ポジティブ・コントロール	WB: Raji whole cell lysate; mouse brain tissue whole cell lysate. ICC/IF: HCT 116 cells.
特記事項	<p>The Life Science industry has been in the grips of a reproducibility crisis for a number of years. Abcam is leading the way in addressing this with our range of recombinant monoclonal antibodies and knockout edited cell lines for gold-standard validation. Please check that this product meets your needs before purchasing.</p> <p>If you have any questions, special requirements or concerns, please send us an inquiry and/or contact our Support team ahead of purchase. Recommended alternatives for this product can be found below, along with publications, customer reviews and Q&As</p>

製品の特性

製品の状態	Liquid
保存方法	Shipped at 4°C. Store at +4°C short term (1-2 weeks). Upon delivery aliquot. Store at -20°C long term. Avoid freeze / thaw cycle.
バッファー	pH: 7.00 Preservative: 0.01% Thimerosal (merthiolate) Constituents: 1.21% Tris, 0.75% Glycine, 10% Glycerol (glycerin, glycerine)
精製度	Immunogen affinity purified
ポリ/モノ	ポリクローナル
アイソタイプ	IgG

アプリケーション

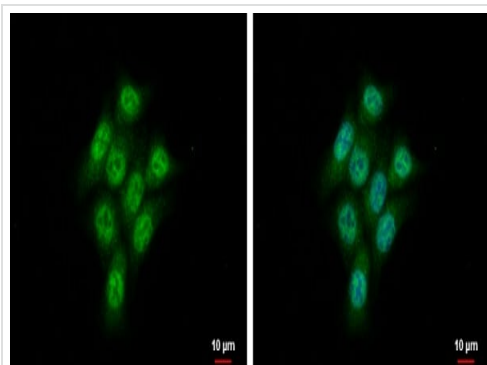
The Abpromise guarantee **Abpromise保証は、次のテスト済みアプリケーションにおけるab228609の使用に適用されます**
アプリケーションノートには、推奨の開始希釈率がありますが、適切な希釈率につきましてはご検討ください。

アプリケーション	Abreviews	特記事項
WB		1/500 - 1/3000. Predicted molecular weight: 22 kDa.
ICC/IF		1/100 - 1/1000.

ターゲット情報

機能	Catalyzes specific phosphoryl transfer from ATP to UMP and CMP.
組織特異性	Ubiquitously expressed.
配列類似性	Belongs to the adenylate kinase family.
細胞内局在	Nucleus. Cytoplasm. Mainly nuclear.

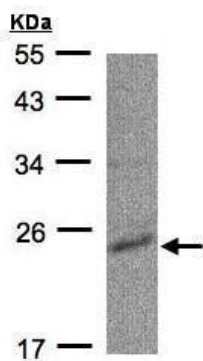
画像



HCT 116 (human colorectal carcinoma cell line) cells stained for Nucleoside-diphosphate kinase (green) using ab228609 at 1/500 dilution in ICC/IF. Cells were fixed in 4% paraformaldehyde at RT for 15 minutes.

Blue: Hoechst 33342 staining.

Immunocytochemistry/ Immunofluorescence - Anti-Nucleoside-diphosphate kinase antibody (ab228609)



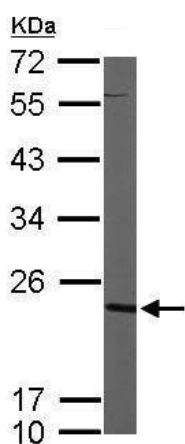
Western blot - Anti-Nucleoside-diphosphate kinase antibody (ab228609)

Anti-Nucleoside-diphosphate kinase antibody (ab228609) at 1/500 dilution + Raji (human Burkitt's lymphoma cell line) whole cell lysate at 30 µg

Developed using the ECL technique.

Predicted band size: 22 kDa

12% SDS-PAGE



Western blot - Anti-Nucleoside-diphosphate kinase antibody (ab228609)

Anti-Nucleoside-diphosphate kinase antibody (ab228609) at 1/1000 dilution + Mouse brain tissue whole cell lysate at 50 µg

Developed using the ECL technique.

Predicted band size: 22 kDa

12% SDS-PAGE

Please note: All products are "FOR RESEARCH USE ONLY. NOT FOR USE IN DIAGNOSTIC PROCEDURES"

Our Abpromise to you: Quality guaranteed and expert technical support

- Replacement or refund for products not performing as stated on the datasheet
- Valid for 12 months from date of delivery
- Response to your inquiry within 24 hours
- We provide support in Chinese, English, French, German, Japanese and Spanish
- Extensive multi-media technical resources to help you
- We investigate all quality concerns to ensure our products perform to the highest standards

If the product does not perform as described on this datasheet, we will offer a refund or replacement. For full details of the Abpromise, please visit <https://www.abcam.co.jp/abpromise> or contact our technical team.

Terms and conditions

- Guarantee only valid for products bought direct from Abcam or one of our authorized distributors