


# Anti-Nucleophosmin (phospho S125) antibody [EPR1856] - BSA and Azide free ab247905

リコンビナント **RabMAb**

画像数 5

### 製品の概要

製品名	Anti-Nucleophosmin (phospho S125) antibody [EPR1856] - BSA and Azide free
製品の詳細	Rabbit monoclonal [EPR1856] to Nucleophosmin (phospho S125) - BSA and Azide free
由来種	Rabbit
アプリケーション	<b>適用あり:</b> IHC-P, WB, Flow Cyt (Intra)
種交差性	<b>交差種:</b> Human <b>交差が予測される動物種:</b> Mouse, Rat 
免疫原	Synthetic peptide. This information is proprietary to Abcam and/or its suppliers.
特記事項	<p>ab247905 is the carrier-free version of <a href="#">ab109546</a>.</p> <p>Our <b>carrier-free</b> antibodies are typically supplied in a PBS-only formulation, purified and free of BSA, sodium azide and glycerol. The carrier-free buffer and high concentration allow for increased conjugation efficiency.</p> <p>This conjugation-ready format is designed for use with fluorochromes, metal isotopes, oligonucleotides, and enzymes, which makes them ideal for antibody labelling, functional and cell-based assays, flow-based assays (e.g. mass cytometry) and Multiplex Imaging applications.</p> <p>Use our <b>conjugation kits</b> for antibody conjugates that are ready-to-use in as little as 20 minutes with &lt;1 minute hands-on-time and 100% antibody recovery: available for fluorescent dyes, HRP, biotin and gold.</p> <p>This product is compatible with the Maxpar<sup>®</sup> Antibody Labeling Kit from Fluidigm, without the need for antibody preparation. Maxpar<sup>®</sup> is a trademark of Fluidigm Canada Inc.</p> <p>This product is a recombinant monoclonal antibody, which offers several advantages including:</p> <ul style="list-style-type: none"> <li>- High batch-to-batch consistency and reproducibility</li> <li>- Improved sensitivity and specificity</li> <li>- Long-term security of supply</li> <li>- Animal-free production</li> </ul> <p>For more information <a href="#">see here</a>.</p> <p>Our RabMAb<sup>®</sup> technology is a patented hybridoma-based technology for making rabbit monoclonal antibodies. For details on our patents, please refer to <a href="#">RabMAb<sup>®</sup> patents</a>.</p>

## 製品の特性

製品の状態	Liquid
保存方法	Shipped at 4°C. Store at +4°C. Do Not Freeze.
バッファー	pH: 7.2 Constituent: PBS
キャリア・フリー	はい
精製度	Protein A purified
ポリ/モノ	モノクローナル
クローン名	EPR1856
アイソタイプ	IgG

## アプリケーション

**The Abpromise guarantee**      **Abpromise保証は、次のテスト済みアプリケーションにおけるab247905の使用に適用されます**  
アプリケーションノートには、推奨の開始希釈率がありますが、適切な希釈率につきましてはご検討ください。

アプリケーション	Abreviews	特記事項
IHC-P		Use at an assay dependent concentration. Perform heat mediated antigen retrieval via the pressure cooker method before commencing with IHC staining protocol. For antigen retrieval, heat up to 98 degree C, below boiling, and then let cool for 10-20 minutes.
WB		Use at an assay dependent concentration. Predicted molecular weight: 33 kDa.
Flow Cyt (Intra)		Use at an assay dependent concentration.

## ターゲット情報

機能	Involved in diverse cellular processes such as ribosome biogenesis, centrosome duplication, protein chaperoning, histone assembly, cell proliferation, and regulation of tumor suppressors p53/TP53 and ARF. Binds ribosome presumably to drive ribosome nuclear export. Associated with nucleolar ribonucleoprotein structures and bind single-stranded nucleic acids. Acts as a chaperonin for the core histones H3, H2B and H4. Stimulates APEX1 endonuclease activity on apurinic/apyrimidinic (AP) double-stranded DNA but inhibits APEX1 endonuclease activity on AP single-stranded RNA. May exert a control of APEX1 endonuclease activity within nucleoli devoted to repair AP on rDNA and the removal of oxidized rRNA molecules. In concert with BRCA2, regulates centrosome duplication. Regulates centriole duplication: phosphorylation by PLK2 is able to trigger centriole replication. Negatively regulates the activation of EIF2AK2/PKR and suppresses apoptosis through inhibition of EIF2AK2/PKR autophosphorylation. Antagonizes the inhibitory effect of ATF5 on cell proliferation and relieves ATF5-induced G2/M blockade (PubMed:22528486).
関連疾患	A chromosomal aberration involving NPM1 is found in a form of non-Hodgkin lymphoma.

Translocation t(2;5)(p23;q35) with ALK. The resulting chimeric NPM1-ALK protein homodimerize and the kinase becomes constitutively activated.

A chromosomal aberration involving NPM1 is found in a form of acute promyelocytic leukemia.

Translocation t(5;17)(q32;q11) with RARA.

A chromosomal aberration involving NPM1 is a cause of myelodysplastic syndrome (MDS).

Translocation t(3;5)(q25.1;q34) with MLF1.

Defects in NPM1 are associated with acute myelogenous leukemia (AML). Mutations in exon 12 affecting the C-terminus of the protein are associated with an aberrant cytoplasmic location.

Belongs to the nucleoplasmin family.

Acetylated at C-terminal lysine residues, thereby increasing affinity to histones.

ADP-ribosylated.

Phosphorylated at Ser-4 by PLK1 and PLK2. Phosphorylation at Ser-4 by PLK2 in S phase is required for centriole duplication and is sufficient to trigger centriole replication. Phosphorylation at Ser-4 by PLK1 takes place during mitosis. Phosphorylated by CDK2 at Ser-125 and Thr-199. Phosphorylation at Thr-199 may trigger initiation of centrosome duplication. Phosphorylated by CDK1 at Thr-199, Thr-219, Thr-234 and Thr-237 during cell mitosis. When these four sites are phosphorylated, RNA-binding activity seem to be abolished. May be phosphorylated at Ser-70 by NEK2. The Thr-199 phosphorylated form has higher affinity for ROCK2. CDK6 triggers Thr-199 phosphorylation when complexed to Kaposi's sarcoma herpesvirus (KSHV) V-cyclin, leading to viral reactivation by reducing viral LANA levels.

Sumoylated by ARF.

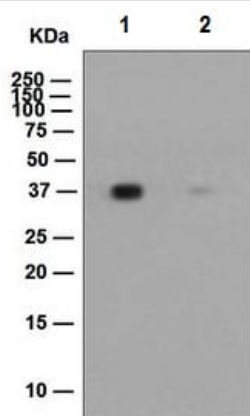
Nucleus, nucleolus. Nucleus, nucleoplasm. Cytoplasm, cytoskeleton, microtubule organizing center, centrosome. Generally nucleolar, but is translocated to the nucleoplasm in case of serum starvation or treatment with anticancer drugs. Has been found in the cytoplasm in patients with primary acute myelogenous leukemia (AML), but not with secondary AML. Can shuttle between cytoplasm and nucleus. Co-localizes with the methylated form of RPS10 in the granular component (GC) region of the nucleolus. Colocalized with nucleolin and APEX1 in nucleoli. Isoform 1 of NEK2 is required for its localization to the centrosome during mitosis.

## 配列類似性

## 翻訳後修飾

## 細胞内局在

## 画像



Western blot - Anti-Nucleophosmin (phospho S125) antibody [EPR1856] - BSA and Azide free (ab247905)

**All lanes :** Anti-Nucleophosmin (phospho S125) antibody [EPR1856] ([ab109546](#)) at 1/10000 dilution

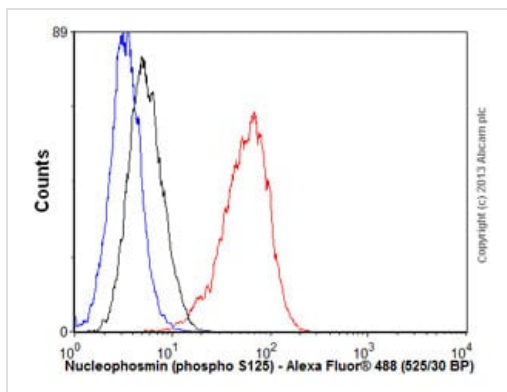
**Lane 1 :** HeLa cell lysate

**Lane 2 :** HeLa cell lysate treated with Alkaline Phosphatase

Lysates/proteins at 10 µg per lane.

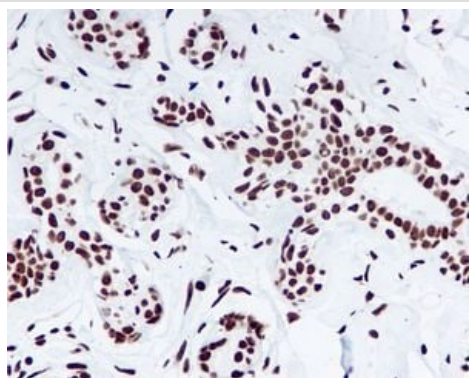
**Predicted band size:** 33 kDa

This data was developed using [ab109546](#), the same antibody clone in a different buffer formulation.



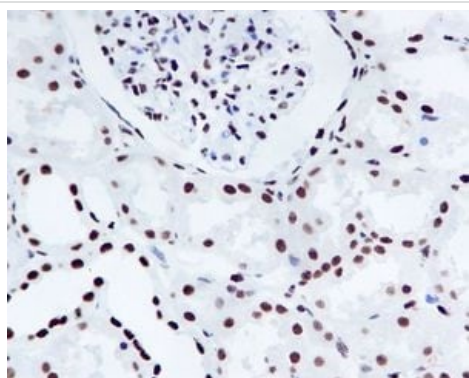
Flow Cytometry (Intracellular) - Anti-Nucleophosmin (phospho S125) antibody [EPR1856] - BSA and Azide free (ab247905)

This data was developed using [ab109546](#), the same antibody clone in a different buffer formulation. Overlay histogram showing HeLa cells stained with [ab109546](#) (red line). The cells were fixed with 80% methanol (5 min) and then permeabilized with 0.1% PBS-Tween for 20 min. The cells were then incubated in 1x PBS / 10% normal goat serum / 0.3M glycine to block non-specific protein-protein interactions followed by the antibody ([ab109546](#), 1/100 dilution) for 30 min at 22°C. The secondary antibody used was Alexa Fluor® 488 goat anti-rabbit IgG (H+L) ([ab150077](#)) at 1/2000 dilution for 30 min at 22°C. Isotype control antibody (black line) was rabbit IgG (monoclonal) (1?g/1x10<sup>6</sup> cells) used under the same conditions. Unlabelled sample (blue line) was also used as a control. Acquisition of >5,000 events were collected using a 20mW Argon ion laser (488nm) and 525/30 bandpass filter.



Immunohistochemistry (Formalin/PFA-fixed paraffin-embedded sections) - Anti-Nucleophosmin (phospho S125) antibody [EPR1856] - BSA and Azide free (ab247905)

This data was developed using [ab109546](#), the same antibody clone in a different buffer formulation. [ab109546](#), at a 1/100 dilution, staining Nucleophosmin in formalin-fixed, paraffin-embedded Human breast tissue. Perform heat mediated antigen retrieval via the pressure cooker method before commencing with IHC staining protocol.



Immunohistochemistry (Formalin/PFA-fixed paraffin-embedded sections) - Anti-Nucleophosmin (phospho S125) antibody [EPR1856] - BSA and Azide free (ab247905)

This data was developed using [ab109546](#), the same antibody clone in a different buffer formulation. [ab109546](#), at a 1/100 dilution, staining Nucleophosmin in formalin-fixed, paraffin-embedded Human kidney tissue. Perform heat mediated antigen retrieval via the pressure cooker method before commencing with IHC staining protocol.

### Why choose a recombinant antibody?



**Research with confidence**  
Consistent and reproducible results



**Long-term and scalable supply**  
Recombinant technology



**Success from the first experiment**  
Confirmed specificity



**Ethical standards compliant**  
Animal-free production

Anti-Nucleophosmin (phospho S125) antibody  
[EPR1856] - BSA and Azide free (ab247905)

**Please note:** All products are "FOR RESEARCH USE ONLY. NOT FOR USE IN DIAGNOSTIC PROCEDURES"

### Our Abpromise to you: Quality guaranteed and expert technical support

---

- Replacement or refund for products not performing as stated on the datasheet
- Valid for 12 months from date of delivery
- Response to your inquiry within 24 hours
- We provide support in Chinese, English, French, German, Japanese and Spanish
- Extensive multi-media technical resources to help you
- We investigate all quality concerns to ensure our products perform to the highest standards

If the product does not perform as described on this datasheet, we will offer a refund or replacement. For full details of the Abpromise, please visit <https://www.abcam.co.jp/abpromise> or contact our technical team.

### Terms and conditions

---

- Guarantee only valid for products bought direct from Abcam or one of our authorized distributors