

Anti-NSE antibody - Neuronal Marker ab53025

★★★★☆ **11 Abreviews** **58 References** 画像数 4

製品の概要

| | |
|----------|---|
| 製品名 | Anti-NSE antibody - Neuronal Marker |
| 製品の詳細 | Rabbit polyclonal to NSE - Neuronal Marker |
| 由来種 | Rabbit |
| アプリケーション | 適用あり: ELISA, ICC/IF, WB, IHC-P, IHC-FoFr, Flow Cyt |
| 種交差性 | 交差種: Mouse, Rat, Human, Pig |
| 免疫原 | Synthetic peptide derived from human NSE |
| 特記事項 | <p>The Life Science industry has been in the grips of a reproducibility crisis for a number of years. Abcam is leading the way in addressing this with our range of recombinant monoclonal antibodies and knockout edited cell lines for gold-standard validation. Please check that this product meets your needs before purchasing.</p> <p>If you have any questions, special requirements or concerns, please send us an inquiry and/or contact our Support team ahead of purchase. Recommended alternatives for this product can be found below, along with publications, customer reviews and Q&As</p> |

製品の特性

| | |
|-----------|---|
| 製品の状態 | Liquid |
| 保存方法 | Shipped at 4°C. Store at -20°C. Stable for 12 months at -20°C. |
| バッファー | <p>pH: 7</p> <p>Preservative: 0.02% Sodium azide</p> <p>Constituents: 50% Glycerol, 0.87% Sodium chloride, PBS</p> |
| 精製度 | Without Mg+2 and Ca+2 |
| 特記事項 (精製) | Immunogen affinity purified |
| | The antibody was affinity-purified from rabbit antiserum by affinity-chromatography using epitope-specific immunogen. |
| ポリ/モノ | ポリクローナル |
| アイソタイプ | IgG |

アプリケーション

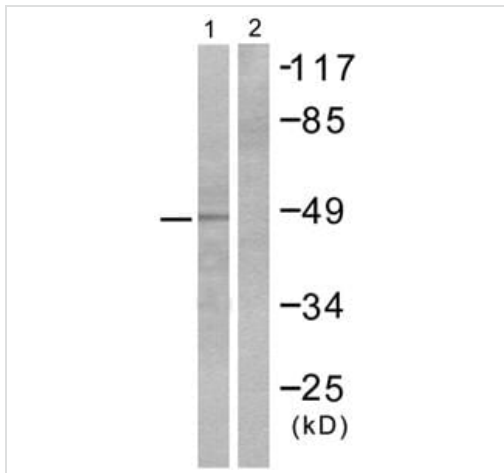
The Abpromise guarantee **Abpromise保証は、次のテスト済みアプリケーションにおけるab53025の使用に適用されます**
 アプリケーションノートには、推奨の開始希釈率がありますが、適切な希釈率につきましてはご検討ください。

| アプリケーション | Abreviews | 特記事項 |
|----------|-----------|---|
| ELISA | | Use at an assay dependent concentration. |
| ICC/IF | ★★★★★ (1) | Use a concentration of 1 - 5 µg/ml. |
| WB | ★★★★★ (3) | 1/500 - 1/1000. Predicted molecular weight: 47 kDa. |
| IHC-P | ★★★★★ (5) | Use at an assay dependent concentration. |
| IHC-FoFr | ★★★★★ (1) | Use at an assay dependent concentration. |
| Flow Cyt | ★★★★★ (1) | Use at an assay dependent concentration. <u>ab171870</u> - Rabbit polyclonal IgG, is suitable for use as an isotype control with this antibody. |

ターゲット情報

| | |
|-------|--|
| 機能 | Has neurotrophic and neuroprotective properties on a broad spectrum of central nervous system (CNS) neurons. Binds, in a calcium-dependent manner, to cultured neocortical neurons and promotes cell survival. |
| 組織特異性 | The alpha/alpha homodimer is expressed in embryo and in most adult tissues. The alpha/beta heterodimer and the beta/beta homodimer are found in striated muscle, and the alpha/gamma heterodimer and the gamma/gamma homodimer in neurons. |
| パスウェイ | Carbohydrate degradation; glycolysis; pyruvate from D-glyceraldehyde 3-phosphate: step 4/5. |
| 配列類似性 | Belongs to the enolase family. |
| 発生段階 | During ontogenesis, there is a transition from the alpha/alpha homodimer to the alpha/beta heterodimer in striated muscle cells, and to the alpha/gamma heterodimer in nerve cells. |
| 細胞内局在 | Cytoplasm. Cell membrane. Can translocate to the plasma membrane in either the homodimeric (alpha/alpha) or heterodimeric (alpha/gamma) form. |

画像



Western blot - Anti-NSE antibody - Neuronal Marker (ab53025)

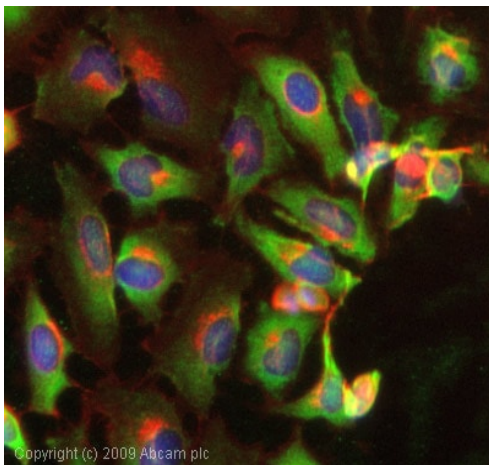
All lanes : Anti-NSE antibody - Neuronal Marker (ab53025) at 1/500 dilution

Lane 1 : Extracts from HepG2 cells with no immunizing peptide

Lane 2 : Extracts from HepG2 cells with immunizing peptide

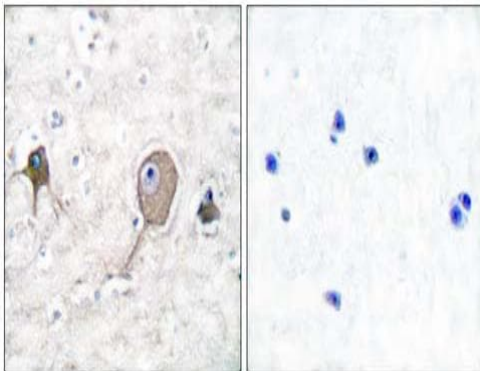
Predicted band size: 47 kDa

Observed band size: 47 kDa



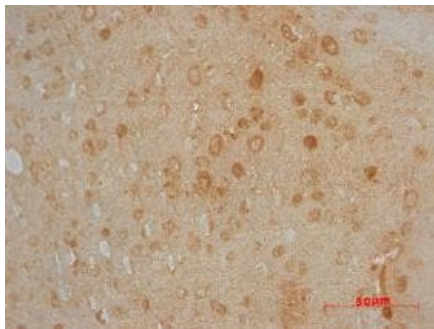
Immunocytochemistry/ Immunofluorescence - Anti-NSE antibody - Neuronal Marker (ab53025)

ICC/IF image of ab53025 stained HeLa cells. The cells were 100% methanol fixed (5 min) and then incubated in 1%BSA / 10% normal goat serum / 0.3M glycine in 0.1% PBS-Tween for 1h to permeabilise the cells and block non-specific protein-protein interactions. The cells were then incubated with the antibody (ab53025, 1µg/ml) overnight at +4°C. The secondary antibody (green) was Alexa Fluor® 488 goat anti-rabbit IgG (H+L) used at a 1/1000 dilution for 1h. Alexa Fluor® 594 WGA was used to label plasma membranes (red) at a 1/200 dilution for 1h. DAPI was used to stain the cell nuclei (blue) at a concentration of 1.43µM.



Immunohistochemical analysis of paraffin-embedded human brain tissue using ab53025 at 1/50-1/100 dilution. Left: without immunizing peptide; Right: with immunizing peptide

Immunohistochemistry (Formalin/PFA-fixed paraffin-embedded sections) - Anti-NSE antibody - Neuronal Marker (ab53025)



ab53025 staining NSE in mouse brain tissue section by Immunohistochemistry (PFA-perfusion fixed frozen tissue sections). Tissues were collected from mice in each group at 10 weeks. Mice were euthanized, the brains were exposed and removed from the body. Then the brain was cut, on ice and fixed in 4% polyformaldehyde or glutaraldehyde solution for histological examination. The primary antibody was used at 1/75 dilution in PBS and incubated with sample for 2 hours at 37°C. A HRP-conjugated secondary antibody was used at for 1hr at 37°C in a humidity box.

Immunohistochemistry (Formalin/PFA-fixed paraffin-embedded sections) - Anti-NSE antibody - Neuronal Marker (ab53025)

Image from Yu Yang, et. al. Mol. Cell. Proteomics, Mar 2009 (Fig 6).

Please note: All products are "FOR RESEARCH USE ONLY. NOT FOR USE IN DIAGNOSTIC PROCEDURES"

Our Abpromise to you: Quality guaranteed and expert technical support

- Replacement or refund for products not performing as stated on the datasheet
- Valid for 12 months from date of delivery
- Response to your inquiry within 24 hours
- We provide support in Chinese, English, French, German, Japanese and Spanish
- Extensive multi-media technical resources to help you
- We investigate all quality concerns to ensure our products perform to the highest standards

If the product does not perform as described on this datasheet, we will offer a refund or replacement. For full details of the Abpromise, please visit <https://www.abcam.co.jp/abpromise> or contact our technical team.

Terms and conditions

- Guarantee only valid for products bought direct from Abcam or one of our authorized distributors