

Anti-NPRL2 antibody ab88691

[2 References](#) [画像数 3](#)

製品の概要

製品名	Anti-NPRL2 antibody
製品の詳細	Mouse polyclonal to NPRL2
由来種	Mouse
アプリケーション	適用あり: WB, ICC/IF
種交差性	交差種: Human
免疫原	Recombinant full length protein within Human NPRL2. The exact immunogen sequence used to generate this antibody is proprietary information. If additional detail on the immunogen is needed to determine the suitability of the antibody for your needs, please contact our Scientific Support team to discuss your requirements. Database link: AAH21984.1
ポジティブ・コントロール	WB: HeLa cell lysate; NPRL2 transfected 293T cell lysate ICC/IF: HeLa cell
特記事項	<p>The Life Science industry has been in the grips of a reproducibility crisis for a number of years. Abcam is leading the way in addressing this with our range of recombinant monoclonal antibodies and knockout edited cell lines for gold-standard validation. Please check that this product meets your needs before purchasing.</p> <p>If you have any questions, special requirements or concerns, please send us an inquiry and/or contact our Support team ahead of purchase. Recommended alternatives for this product can be found below, along with publications, customer reviews and Q&As</p>

製品の特性

製品の状態	Liquid
保存方法	Shipped at 4°C. Upon delivery aliquot and store at -20°C or -80°C. Avoid repeated freeze / thaw cycles.
バッファー	pH: 7.40 Constituent: 100% PBS
精製度	Protein A purified
ポリ/モノ	ポリクローナル
アイソタイプ	IgG

アプリケーション

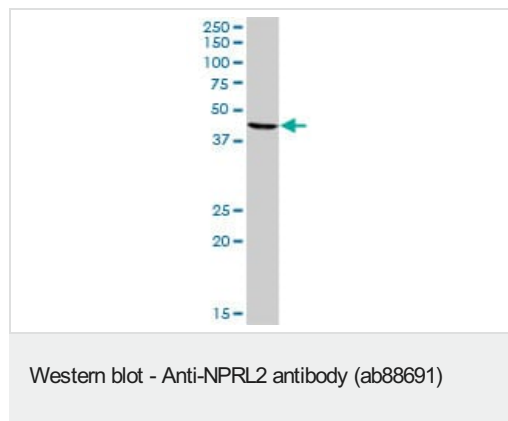
The Abpromise guarantee Abpromise保証は、次のテスト済みアプリケーションにおけるab88691の使用に適用されず
アプリケーションノートには、推奨の開始希釈率がありますが、適切な希釈率につきましてはご検討ください。

アプリケーション	Abreviews	特記事項
WB		Use a concentration of 1 µg/ml. Predicted molecular weight: 44 kDa.
ICC/IF		Use a concentration of 10 µg/ml.

ターゲット情報

機能	Suppresses Src-dependent tyrosine phosphorylation and activation of PDPK1 and its downstream signaling. Down-regulates PDPK1 kinase activity by interfering with tyrosine phosphorylation at the Tyr-9 Tyr-373 and Tyr-376 residues. May act as a tumor suppressor. Suppresses cell growth and enhanced sensitivity to various anticancer drugs.
組織特異性	Most abundant in skeletal muscle, followed by brain, liver and pancreas, with lower amounts in lung, kidney, placenta and heart. Expressed in most lung cancer cell lines tested.
配列類似性	Belongs to the NPR2 family.

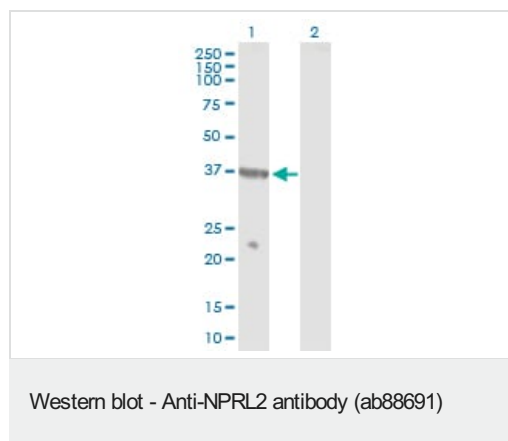
画像



Anti-NPRL2 antibody (ab88691) at 1 µg/ml + HeLa cell lysate at 50 µg

Predicted band size: 44 kDa

Observed band size: 44 kDa



All lanes : Anti-NPRL2 antibody (ab88691) at 1 µg/ml

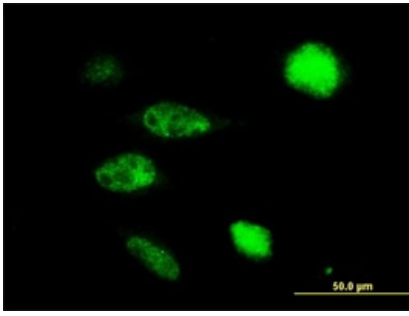
Lane 1 : NPRL2 transfected 293T cell lysate

Lane 2 : non transfected 293T cell lysate

Lysates/proteins at 25 µg per lane.

Predicted band size: 44 kDa

Observed band size: ~37 kDa



ab88691, at 10 $\mu\text{g/ml}$, staining NPRL2 in HeLa cell by Immunofluorescence.

Immunocytochemistry/ Immunofluorescence - Anti-NPRL2 antibody (ab88691)

Please note: All products are "FOR RESEARCH USE ONLY. NOT FOR USE IN DIAGNOSTIC PROCEDURES"

Our Abpromise to you: Quality guaranteed and expert technical support

- Replacement or refund for products not performing as stated on the datasheet
- Valid for 12 months from date of delivery
- Response to your inquiry within 24 hours
- We provide support in Chinese, English, French, German, Japanese and Spanish
- Extensive multi-media technical resources to help you
- We investigate all quality concerns to ensure our products perform to the highest standards

If the product does not perform as described on this datasheet, we will offer a refund or replacement. For full details of the Abpromise, please visit <https://www.abcam.co.jp/abpromise> or contact our technical team.

Terms and conditions

- Guarantee only valid for products bought direct from Abcam or one of our authorized distributors