



Anti-NKF3 kinase family member/PEAK1 antibody ab121865

画像数 2

製品の概要

製品名	Anti-NKF3 kinase family member/PEAK1 antibody
製品の詳細	Rabbit polyclonal to NKF3 kinase family member/PEAK1
由来種	Rabbit
アプリケーション	適用あり: IHC-P, ICC/IF
種交差性	交差種: Human
免疫原	Recombinant fragment corresponding to Human NKF3 kinase family member/PEAK1 aa 81-166. Sequence: DGQSIGGELSIQEHCEKPKVIIGWNRNRAALSQKPLNNNNED DEGISHVP KPYGNNDKAKKMSDNNGLTEVLKEIAGLDTAPQIR <div>  Run BLAST with  Run BLAST with </div>
ポジティブ・コントロール	Human stomach tissue.
特記事項	<p>The Life Science industry has been in the grips of a reproducibility crisis for a number of years. Abcam is leading the way in addressing this with our range of recombinant monoclonal antibodies and knockout edited cell lines for gold-standard validation. Please check that this product meets your needs before purchasing.</p> <p>If you have any questions, special requirements or concerns, please send us an inquiry and/or contact our Support team ahead of purchase. Recommended alternatives for this product can be found below, along with publications, customer reviews and Q&As</p>

製品の特性

製品の状態	Liquid
保存方法	Shipped at 4°C. Upon delivery aliquot and store at -20°C. Avoid freeze / thaw cycles.
バッファー	pH: 7.20 Preservative: 0.02% Sodium azide Constituents: 59% PBS, 40% Glycerol (glycerin, glycerine)
精製度	Immunogen affinity purified
ポリ/モノ	ポリクローナル
アイソタイプ	IgG

アプリケーション

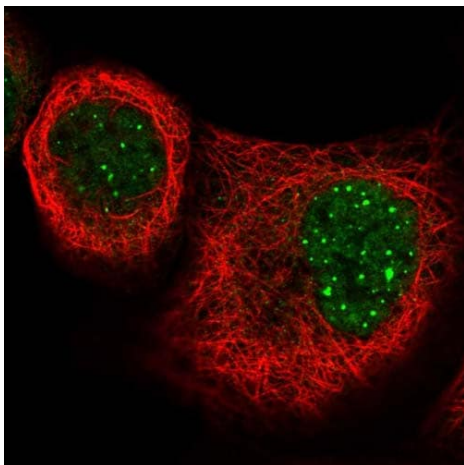
The Abpromise guarantee **Abpromise保証は、** 次のテスト済みアプリケーションにおけるab121865の使用に適用されます
アプリケーションノートには、推奨の開始希釈率がありますが、適切な希釈率につきましてはご検討ください。

アプリケーション	Abreviews	特記事項
IHC-P		1/10 - 1/20. Perform heat mediated antigen retrieval with citrate buffer pH 6 before commencing with IHC staining protocol.
ICC/IF		Use a concentration of 1 - 4 µg/ml. Recommend PFA Fixation and Triton X-100 treatment

ターゲット情報

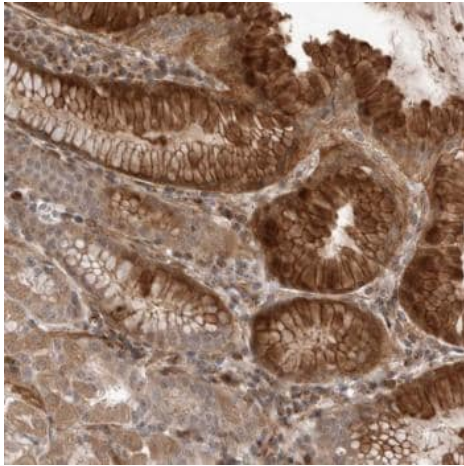
機能	Tyrosine kinase that may play a role in cell spreading and migration on fibronectin. May directly or indirectly affect phosphorylation levels of cytoskeleton-associated proteins MAPK1/ERK and PXN.
配列類似性	Belongs to the protein kinase superfamily. Contains 1 protein kinase domain.
翻訳後修飾	Phosphorylated on tyrosine in a CSK-dependent manner in response to adhesion to fibronectin and to EGF stimulation. Autophosphorylated in vitro.
細胞内局在	Cytoplasm > cytoskeleton. Cell junction > focal adhesion. Colocalizes with F-actin in serum-rich medium. Actin colocalization is reduced during serum starvation.

画像



Immunofluorescent staining of Human cell line A-431 shows positivity in nucleus but not nucleoli and cytoplasm. Recommended concentration of ab121865 1-4 µg/ml. Cells treated with PFA/Triton X-100.

Immunocytochemistry/ Immunofluorescence - Anti-NKF3 kinase family member/PEAK1 antibody (ab121865)



ab121865, at a 1/10 dilution, staining NKF3 kinase family member/PEAK1 in glandular cells of paraffin-embedded Human stomach tissue by immunohistochemistry.

Immunohistochemistry (Formalin/PFA-fixed paraffin-embedded sections) - Anti-NKF3 kinase family member/PEAK1 antibody (ab121865)

Please note: All products are "FOR RESEARCH USE ONLY. NOT FOR USE IN DIAGNOSTIC PROCEDURES"

Our Abpromise to you: Quality guaranteed and expert technical support

- Replacement or refund for products not performing as stated on the datasheet
- Valid for 12 months from date of delivery
- Response to your inquiry within 24 hours
- We provide support in Chinese, English, French, German, Japanese and Spanish
- Extensive multi-media technical resources to help you
- We investigate all quality concerns to ensure our products perform to the highest standards

If the product does not perform as described on this datasheet, we will offer a refund or replacement. For full details of the Abpromise, please visit <https://www.abcam.co.jp/abpromise> or contact our technical team.

Terms and conditions

- Guarantee only valid for products bought direct from Abcam or one of our authorized distributors