


### Anti-NIPP1 antibody [EPR14579(B)] ab181852

リコンビナント **RabMAb**

画像数 2

#### 製品の概要

製品名	Anti-NIPP1 antibody [EPR14579(B)]
製品の詳細	Rabbit monoclonal [EPR14579(B)] to NIPP1
由来種	Rabbit
アプリケーション	<b>適用あり:</b> WB
種交差性	<b>交差種:</b> Human <b>交差が予測される動物種:</b> Mouse, Rat 
免疫原	Synthetic peptide. This information is proprietary to Abcam and/or its suppliers.
ポジティブ・コントロール	HeLa, HepG2, Jurkat and 293T cell lysates.
特記事項	<p>This product is a recombinant monoclonal antibody, which offers several advantages including:</p> <ul style="list-style-type: none"> <li>- High batch-to-batch consistency and reproducibility</li> <li>- Improved sensitivity and specificity</li> <li>- Long-term security of supply</li> <li>- Animal-free production</li> </ul> <p>For more information <a href="#">see here</a>.</p> <p>Our RabMAb<sup>®</sup> technology is a patented hybridoma-based technology for making rabbit monoclonal antibodies. For details on our patents, please refer to <a href="#">RabMAb<sup>®</sup> patents</a>.</p>

#### 製品の特性

製品の状態	Liquid
保存方法	Shipped at 4°C. Store at +4°C short term (1-2 weeks). Upon delivery aliquot. Store at -20°C long term. Avoid freeze / thaw cycle.
バッファー	Preservative: 0.01% Sodium azide Constituents: 40% Glycerol (glycerin, glycerine), 59% PBS, 0.05% BSA
精製度	Tissue culture supernatant
ポリ/モノ	モノクローナル
クローン名	EPR14579(B)
アイソタイプ	IgG

## アプリケーション

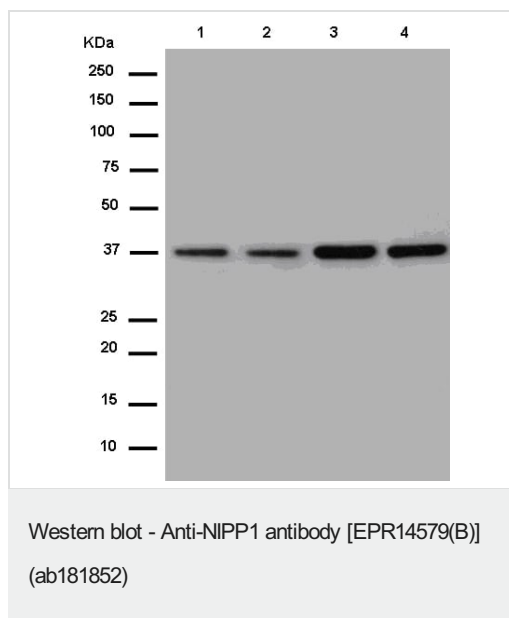
**The Abpromise guarantee**      **Abpromise保証は、次のテスト済みアプリケーションにおけるab181852の使用に適用されます**  
アプリケーションノートには、推奨の開始希釈率がありますが、適切な希釈率につきましてはご検討ください。

アプリケーション	Abreviews	特記事項
WB		1/1000 - 1/10000. Detects a band of approximately 38 kDa (predicted molecular weight: 38 kDa).

## ターゲット情報

機能	Inhibitor subunit of the major nuclear protein phosphatase-1 (PP-1). It has RNA-binding activity but does not cleave RNA and may target PP-1 to RNA-associated substrates. May also be involved in pre-mRNA splicing. Binds DNA and might act as a transcriptional repressor. Seems to be required for cell proliferation. Isoform Gamma is a site-specific single-strand endoribonuclease that cleaves single strand RNA 3' to purines and pyrimidines in A+U-rich regions. It generates 5'-phosphate termini at the site of cleavage. This isoform does not inhibit PP-1. May be implicated in mRNA splicing.
組織特異性	Ubiquitously expressed, with highest levels in heart and skeletal muscle, followed by brain, placenta, lung, liver and pancreas. Less abundant in kidney. The concentration and ratio between isoforms is cell-type dependent. Isoform Alpha (>90%) and isoform Beta were found in brain, heart and kidney. Isoform Gamma is mainly found in B-cells and T-lymphocytes, and has been found in 293 embryonic kidney cells.
配列類似性	Contains 1 FHA domain.
ドメイン	Has a basic N- and C-terminal and an acidic central domain.
翻訳後修飾	May be inactivated by phosphorylation on Ser-199 or Ser-204 (By similarity). Phosphorylated by Lyn in vitro on Tyr-264, and also on Tyr-335 in the presence of RNA.
細胞内局在	Nucleus. Nucleus speckle. Primarily, but not exclusively, nuclear and Cytoplasm. Found mainly in the cytoplasm.

## 画像



**All lanes :** Anti-NIPP1 antibody [EPR14579(B)] (ab181852) at 1/20000 dilution

**Lane 1 :** HeLa cell lysate

**Lane 2 :** HepG2 cell lysate

**Lane 3 :** Jurkat cell lysate

**Lane 4 :** 293T cell lysate

Lysates/proteins at 20 µg per lane.

#### Secondary

**All lanes :** Goat Anti-Rabbit IgG, (H+L) HRP at 1/1000 dilution

**Predicted band size:** 38 kDa

Why choose a recombinant antibody?

**Research with confidence**  
Consistent and reproducible results

**Long-term and scalable supply**  
Recombinant technology

**Success from the first experiment**  
Confirmed specificity

**Ethical standards compliant**  
Animal-free production

Anti-NIPP1 antibody [EPR14579(B)] (ab181852)

**Please note:** All products are "FOR RESEARCH USE ONLY. NOT FOR USE IN DIAGNOSTIC PROCEDURES"

#### Our Abpromise to you: Quality guaranteed and expert technical support

- Replacement or refund for products not performing as stated on the datasheet
- Valid for 12 months from date of delivery
- Response to your inquiry within 24 hours
- We provide support in Chinese, English, French, German, Japanese and Spanish
- Extensive multi-media technical resources to help you
- We investigate all quality concerns to ensure our products perform to the highest standards

If the product does not perform as described on this datasheet, we will offer a refund or replacement. For full details of the Abpromise, please visit <https://www.abcam.co.jp/abpromise> or contact our technical team.

## Terms and conditions

---

- Guarantee only valid for products bought direct from Abcam or one of our authorized distributors