

Anti-Nicotinic Acetylcholine Receptor alpha 4/CHRNA4 antibody [EPR4563(2)] ab124832

リコンビナント RabMAb

★★★★☆ **2 Abreviews** **5 References** [画像数 2](#)

製品の概要

製品名	Anti-Nicotinic Acetylcholine Receptor alpha 4/CHRNA4 antibody [EPR4563(2)]
製品の詳細	Rabbit monoclonal [EPR4563(2)] to Nicotinic Acetylcholine Receptor alpha 4/CHRNA4
由来種	Rabbit
アプリケーション	適用あり: WB 適用なし: Flow Cyt, ICC/IF or IHC-P
種交差性	交差種: Mouse, Rat, Human
免疫原	Synthetic peptide within Human Nicotinic Acetylcholine Receptor alpha 4/CHRNA4 aa 500-600. The exact sequence is proprietary.
ポジティブ・コントロール	SH-SY5Y, A673, C6 and Neuro-2a cell lysates.
特記事項	This product is a recombinant monoclonal antibody, which offers several advantages including: <ul style="list-style-type: none">- High batch-to-batch consistency and reproducibility- Improved sensitivity and specificity- Long-term security of supply- Animal-free production For more information see here . Our RabMAb [®] technology is a patented hybridoma-based technology for making rabbit monoclonal antibodies. For details on our patents, please refer to RabMAb[®] patents .

製品の特性

製品の状態	Liquid
保存方法	Shipped at 4°C. Store at -20°C. Stable for 12 months at -20°C.
バッファー	pH: 7.20 Preservative: 0.05% Sodium azide Constituents: 0.1% BSA, 40% Glycerol (glycerin, glycerine), 9.85% Tris glycine, 50% Tissue culture supernatant
精製度	Protein A purified
ポリ/モノ	モノクローナル

クローン名 EPR4563(2)
アイソタイプ IgG

アプリケーション

The Abpromise guarantee **Abpromise保証は、次のテスト済みアプリケーションにおけるab124832の使用に適用されます**
アプリケーションノートには、推奨の開始希釈率がありますが、適切な希釈率につきましてはご検討ください。

アプリケーション	Abreviews	特記事項
WB	★★★★☆ (1)	1/10000 - 1/50000. Detects a band of approximately 70 kDa (predicted molecular weight: 70 kDa).

追加情報 Is unsuitable for Flow Cyt, ICC/IF or IHC-P.

ターゲット情報

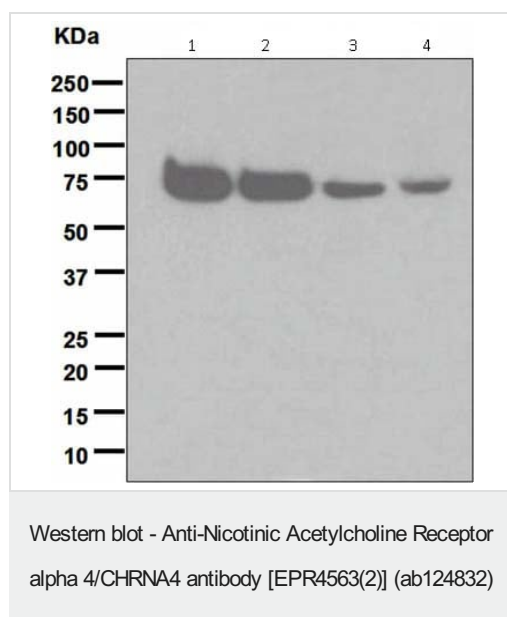
機能 After binding acetylcholine, the AChR responds by an extensive change in conformation that affects all subunits and leads to opening of an ion-conducting channel across the plasma membrane.

関連疾患 Defects in CHRNA4 are the cause of nocturnal frontal lobe epilepsy type 1 (ENFL1) [MIM:600513]; also symbolized ADNFLE. ENFL1 is an autosomal dominant epilepsy characterized by nocturnal seizures with hyperkinetic automatisms and poorly organized stereotyped movements.

配列類似性 Belongs to the ligand-gated ion channel (TC 1.A.9) family. Acetylcholine receptor (TC 1.A.9.1) subfamily. Alpha-4/CHRNA4 sub-subfamily.

細胞内局在 Cell junction > synapse > postsynaptic cell membrane. Cell membrane.

画像



All lanes : Anti-Nicotinic Acetylcholine Receptor alpha 4/CHRNA4 antibody [EPR4563(2)] (ab124832) at 1/10000 dilution

Lane 1 : SH-SY5Y cell lysate

Lane 2 : A673 cell lysate

Lane 3 : C6 cell lysate

Lane 4 : Neuro-2a cell lysate

Lysates/proteins at 10 µg per lane.

Secondary

All lanes : HRP labelled goat anti-rabbit at 1/2000 dilution

Predicted band size: 70 kDa

Observed band size: 70 kDa

Why choose a recombinant antibody?



Research with confidence
Consistent and reproducible results



Long-term and scalable supply
Recombinant technology



Success from the first experiment
Confirmed specificity



Ethical standards compliant
Animal-free production

Anti-Nicotinic Acetylcholine Receptor alpha
4/CHRNA4 antibody [EPR4563(2)] (ab124832)

Please note: All products are "FOR RESEARCH USE ONLY. NOT FOR USE IN DIAGNOSTIC PROCEDURES"

Our Abpromise to you: Quality guaranteed and expert technical support

- Replacement or refund for products not performing as stated on the datasheet
- Valid for 12 months from date of delivery
- Response to your inquiry within 24 hours
- We provide support in Chinese, English, French, German, Japanese and Spanish
- Extensive multi-media technical resources to help you
- We investigate all quality concerns to ensure our products perform to the highest standards

If the product does not perform as described on this datasheet, we will offer a refund or replacement. For full details of the Abpromise, please visit <https://www.abcam.co.jp/abpromise> or contact our technical team.

Terms and conditions

- Guarantee only valid for products bought direct from Abcam or one of our authorized distributors