

# Anti-Nicotinic Acetylcholine Receptor alpha 4/CHRNA4 antibody ab41172

★★★★★ [1 Abreviews](#) [5 References](#) [画像数 2](#)

### 製品の概要

|          |  |
|----------|--|
| 製品名      | Anti-Nicotinic Acetylcholine Receptor alpha 4/CHRNA4 antibody  |
| 製品の詳細    | Rabbit polyclonal to Nicotinic Acetylcholine Receptor alpha 4/CHRNA4   |
| 由来種      | Rabbit   |
| 特異性      | Antiserum Specificity Polypeptide % Cross Reactivity Nicotinic a4 receptor (620-627) 100<br>Nicotinic a4 receptor ~80 Nicotinic a3 receptor 0 Nicotinic a5 receptor 0 Nicotinic a7 receptor 0<br>Nicotinic β2 receptor 0 Nicotinic β3 receptor 0 Nicotinic β4 receptor 0 |
| アプリケーション | <b>適用あり:</b> ELISA, ICC/IF, IHC-P, WB, IHC-Fr  |
| 種交差性     | <b>交差種:</b> Mouse, Rat, Chicken, Human, Chimpanzee, Pufferfish, Zebrafish, Snail   |
| 免疫原      | Synthetic peptide corresponding to Human Nicotinic Acetylcholine Receptor alpha 4/CHRNA4 aa<br>620-627 (C terminal) conjugated to keyhole limpet haemocyanin (Cysteine residue).<br>Sequence:<br>PPWLAGMI  |

(Peptide available as [ab49523](#), [ab99319](#))

 [Run BLAST with](#)

 [Run BLAST with](#)

### 特記事項

The Life Science industry has been in the grips of a reproducibility crisis for a number of years. Abcam is leading the way in addressing this with our range of recombinant monoclonal antibodies and knockout edited cell lines for gold-standard validation. Please check that this product meets your needs before purchasing.

If you have any questions, special requirements or concerns, please send us an inquiry and/or contact our Support team ahead of purchase. Recommended alternatives for this product can be found below, along with publications, customer reviews and Q&As

### 製品の特性

|       |   |
|-------|---|
| 製品の状態 | Liquid  |
| 保存方法  | Shipped at 4°C. Upon delivery aliquot and store at -20°C. Avoid freeze / thaw cycles. |
| バッファー | Constituents: PBS, 1% BSA   |
| 精製度   | Whole antiserum   |

ポリ/モノ  
アイソタイプ

ポリクローナル  
IgG

## アプリケーション

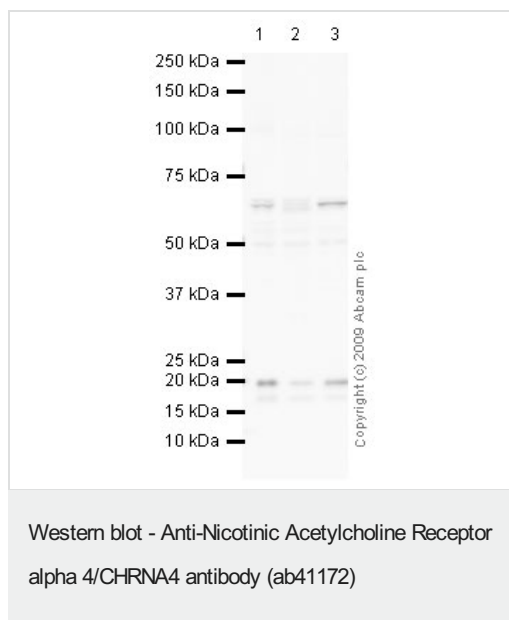
**The Abpromise guarantee** Abpromise保証は、 次のテスト済みアプリケーションにおけるab41172の使用に適用されます  
アプリケーションノートには、推奨の開始希釈率がありますが、適切な希釈率につきましてはご確認ください。

| アプリケーション | Abreviews | 特記事項   |
|----------|-----------|--|
| ELISA    |           | Use at an assay dependent concentration.   |
| ICC/IF   |           | Use at an assay dependent concentration.   |
| IHC-P    |           | 1/250.   |
| WB       |           | 1/800. Predicted molecular weight: 70 kDa. With this antibody, we have found that blocking with 5% goat or donkey serum significantly reduces background as compared to BSA or milk. |
| IHC-Fr   | ★★★★★ (1) | Use at an assay dependent concentration.   |

## ターゲット情報

|       |   |
|-------|---|
| 機能    | After binding acetylcholine, the AChR responds by an extensive change in conformation that affects all subunits and leads to opening of an ion-conducting channel across the plasma membrane.   |
| 関連疾患  | Defects in CHRNA4 are the cause of nocturnal frontal lobe epilepsy type 1 (ENFL1) [MIM:600513]; also symbolized ADNFLE. ENFL1 is an autosomal dominant epilepsy characterized by nocturnal seizures with hyperkinetic automatisms and poorly organized stereotyped movements. |
| 配列類似性 | Belongs to the ligand-gated ion channel (TC 1.A.9) family. Acetylcholine receptor (TC 1.A.9.1) subfamily. Alpha-4/CHRNA4 sub-subfamily.   |
| 細胞内局在 | Cell junction > synapse > postsynaptic cell membrane. Cell membrane.  |

## 画像



**All lanes :** Anti-Nicotinic Acetylcholine Receptor alpha 4/CHRNA4 antibody (ab41172) at 1/800 dilution

**Lane 1 :** SW480 (Human colon adenocarcinoma cell line) Whole Cell Lysate

**Lane 2 :** HepG2 (Human hepatocellular liver carcinoma cell line) Whole Cell Lysate

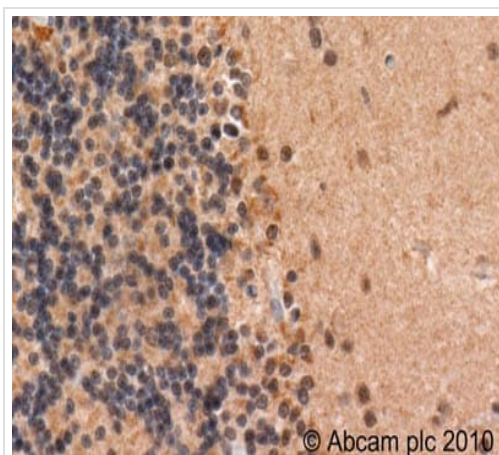
**Lane 3 :** HeLa (Human epithelial carcinoma cell line) Whole Cell Lysate

Lysates/proteins at 10 µg per lane.

### Secondary

**All lanes :** Goat polyclonal to Rabbit IgG - H&L - Pre-Adsorbed (HRP) at 1/3000 dilution

**Predicted band size:** 70 kDa



Immunohistochemistry (Formalin/PFA-fixed paraffin-embedded sections) - Anti-Nicotinic Acetylcholine Receptor alpha 4/CHRNA4 antibody (ab41172)

ab41172 (1/250 dilution) staining Nicotinic Acetylcholine Receptor alpha 4/CHRNA4 in human cerebellum using an automated system (DAKO Autostainer Plus). Using this protocol there is strong staining of nuclear and membrane compartment within the glia region of cells

Sections were rehydrated and antigen retrieved with the Dako 3 in 1 AR buffer EDTA pH 9.0 in a DAKO PT link. Slides were peroxidase blocked in 3% H<sub>2</sub>O<sub>2</sub> in methanol for 10 mins. They were then blocked with Dako Protein block for 10 minutes (containing casein 0.25% in PBS) then incubated with primary antibody for 20 min and detected with Dako envision flex amplification kit for 30 minutes. Colorimetric detection was completed with Diaminobenzidine for 5 minutes. Slides were counterstained with Haematoxylin and coverslipped under DePeX. Please note that, for manual staining, optimization of primary antibody concentration and incubation time is recommended. Signal amplification may be required.

**Please note:** All products are "FOR RESEARCH USE ONLY. NOT FOR USE IN DIAGNOSTIC PROCEDURES"

### **Our Abpromise to you: Quality guaranteed and expert technical support**

---

- Replacement or refund for products not performing as stated on the datasheet
- Valid for 12 months from date of delivery
- Response to your inquiry within 24 hours
- We provide support in Chinese, English, French, German, Japanese and Spanish
- Extensive multi-media technical resources to help you
- We investigate all quality concerns to ensure our products perform to the highest standards

If the product does not perform as described on this datasheet, we will offer a refund or replacement. For full details of the Abpromise, please visit <https://www.abcam.co.jp/abpromise> or contact our technical team.

### **Terms and conditions**

---

- Guarantee only valid for products bought direct from Abcam or one of our authorized distributors