

### Anti-NFAT2 antibody ab25916

★★★★★ [11 Abreviews](#) [52 References](#) [画像数 3](#)

#### 製品の概要

製品名	Anti-NFAT2 antibody
製品の詳細	Rabbit polyclonal to NFAT2
由来種	Rabbit
特異性	The amino acid sequence used is 100% identical in human NFATc1A, B, C and E isoforms. The NFATc1 antibody may detect multiple isoforms of different sizes depending upon the cell lines.
アプリケーション	<b>適用あり:</b> ICC/IF, WB
種交差性	<b>交差種:</b> Mouse, Human, Chimpanzee
免疫原	Synthetic peptide: NKRKYSLNGRQPPYSPHHS , corresponding to amino acids 263-282 of Human NFATc1 <a href="#">Run BLAST with</a> <a href="#">Run BLAST with</a>
ポジティブ・コントロール	Ramos cell lysate
特記事項	<p>The Life Science industry has been in the grips of a reproducibility crisis for a number of years. Abcam is leading the way in addressing this with our range of recombinant monoclonal antibodies and knockout edited cell lines for gold-standard validation. Please check that this product meets your needs before purchasing.</p> <p>If you have any questions, special requirements or concerns, please send us an inquiry and/or contact our Support team ahead of purchase. Recommended alternatives for this product can be found below, along with publications, customer reviews and Q&amp;As</p>

#### 製品の特性

製品の状態	Liquid
保存方法	Shipped at 4°C. Store at +4°C short term (1-2 weeks). Upon delivery aliquot. Store at -20°C long term.
バッファー	pH: 7.4 Preservative: 0.05% Sodium azide Constituents: PBS, 0.05% BSA
精製度	Protein G purified
ポリ/モノ	ポリクローナル

## アプリケーション

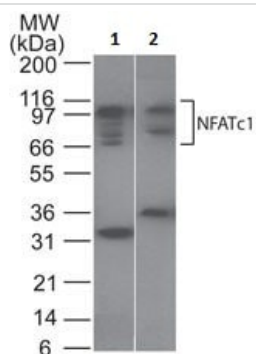
**The Abpromise guarantee** Abpromise保証は、次のテスト済みアプリケーションにおけるab25916の使用に適用されます  
 アプリケーションノートには、推奨の開始希釈率がありますが、適切な希釈率につきましてはご検討ください。

アプリケーション	Abreviews	特記事項
ICC/IF	★★★★★ (2)	1/20.
WB	★★★★★ (4)	Use a concentration of 1 - 3 µg/ml. Predicted molecular weight varies with isoform.

## ターゲット情報

機能	Plays a role in the inducible expression of cytokine genes in T-cells, especially in the induction of the IL-2 or IL-4 gene transcription. Also controls gene expression in embryonic cardiac cells. Could regulate not only the activation and proliferation but also the differentiation and programmed death of T-lymphocytes as well as lymphoid and non-lymphoid cells.
組織特異性	Expressed in thymus, peripheral leukocytes as T-cells and spleen. Isoforms A are preferentially expressed in effector T-cells (thymus and peripheral leukocytes) whereas isoforms B and isoforms C are preferentially expressed in naive T-cells (spleen). Isoforms B are expressed in naive T-cells after first antigen exposure and isoforms A are expressed in effector T-cells after second antigen exposure.
配列類似性	Contains 1 RHD (Rel-like) domain.
ドメイン	Rel Similarity Domain (RSD) allows DNA-binding and cooperative interactions with AP1 factors. The N-terminal transactivation domain (TAD-A) binds to and is activated by Cbp/p300. The dephosphorylated form contains two unmasked nuclear localization signals (NLS), which allow translocation of the protein to the nucleus. Isoforms C have a C-terminal part with an additional trans-activation domain, TAD-B, which acts as a transcriptional activator. Isoforms B have a shorter C-terminal part without complete TAD-B which acts as a transcriptional repressor.
翻訳後修飾	Phosphorylated by NFATC-kinase; dephosphorylated by calcineurin.
細胞内局在	Cytoplasm. Nucleus. Cytoplasmic for the phosphorylated form and nuclear after activation that is controlled by calcineurin-mediated dephosphorylation. Rapid nuclear exit of NFATC is thought to be one mechanism by which cells distinguish between sustained and transient calcium signals. The subcellular localization of NFATC plays a key role in the regulation of gene transcription.

## 画像

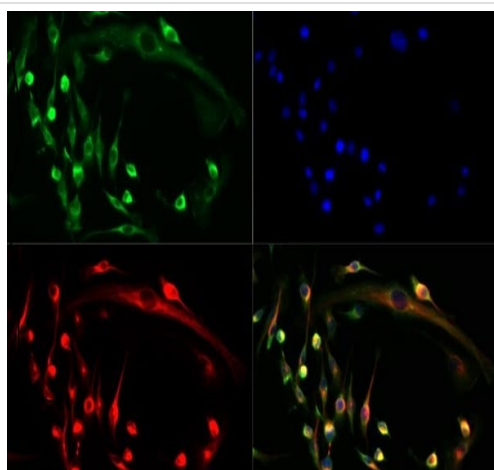


Western blot - Anti-NFAT2 antibody (ab25916)

**All lanes :** Anti-NFAT2 antibody (ab25916) at 1 mg/ml

**Lane 1 :** Ramos (human Burkitt's lymphoma cell line) whole cell lysate

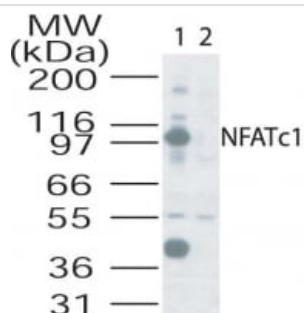
**Lane 2 :** RAW 264.7 (mouse macrophage cell line transformed with Abelson murine leukemia virus) whole cell lysate



Immunocytochemistry/ Immunofluorescence - Anti-NFAT2 antibody (ab25916)

RAW 264.7 (Mouse macrophage cell line transformed with Abelson murine leukemia virus) cells stained for NFAT2 (green) using ab25916 at 1/500 dilution in ICC/IF.

The nuclear counterstain is DAPI (blue). Alpha-Tubulin is stained with Dylight 550 (red).



Western blot - Anti-NFAT2 antibody (ab25916)

Western blot analysis of NFATc1 in Ramos cell lysate. Lane 1.

Without blocking peptide. Lane 2. With blocking peptide.

**Please note:** All products are "FOR RESEARCH USE ONLY. NOT FOR USE IN DIAGNOSTIC PROCEDURES"

### **Our Abpromise to you: Quality guaranteed and expert technical support**

---

- Replacement or refund for products not performing as stated on the datasheet
- Valid for 12 months from date of delivery
- Response to your inquiry within 24 hours
  
- We provide support in Chinese, English, French, German, Japanese and Spanish
- Extensive multi-media technical resources to help you
- We investigate all quality concerns to ensure our products perform to the highest standards

If the product does not perform as described on this datasheet, we will offer a refund or replacement. For full details of the Abpromise, please visit <https://www.abcam.co.jp/abpromise> or contact our technical team.

### **Terms and conditions**

---

- Guarantee only valid for products bought direct from Abcam or one of our authorized distributors