


Anti-Neurofibromin antibody ab17963

★★★★★ [5 Abreviews](#) [11 References](#) [画像数 2](#)

製品の概要

製品名	Anti-Neurofibromin antibody
製品の詳細	Rabbit polyclonal to Neurofibromin
由来種	Rabbit
アプリケーション	適用あり: WB, IP
種交差性	交差種: Mouse, Human 交差が予測される動物種: Rat, Rabbit, Horse, Cow, Chimpanzee, Ferret, Rhesus monkey, Gorilla, Orangutan, Elephant 
免疫原	Synthetic peptide. This information is proprietary to Abcam and/or its suppliers.
ポジティブ・コントロール	WB: HeLa, 293T, TCMK-1 and NIH3T3 whole cell lysates. IP: HeLa whole cell lysate.
特記事項	<p>The Life Science industry has been in the grips of a reproducibility crisis for a number of years. Abcam is leading the way in addressing this with our range of recombinant monoclonal antibodies and knockout edited cell lines for gold-standard validation. Please check that this product meets your needs before purchasing.</p> <p>If you have any questions, special requirements or concerns, please send us an inquiry and/or contact our Support team ahead of purchase. Recommended alternatives for this product can be found below, along with publications, customer reviews and Q&As</p>

製品の特性

製品の状態	Liquid
保存方法	Shipped at 4°C. Upon delivery aliquot and store at -20°C. Avoid freeze / thaw cycles.
バッファー	pH: 7 Preservative: 0.1% Sodium azide Constituents: 0.021% PBS, 1.764% Sodium citrate, 1.815% Tris
精製度	Immunogen affinity purified
ポリ/モノ	ポリクローナル
アイソタイプ	IgG

アプリケーション

The Abpromise guarantee

Abpromise保証は、次のテスト済みアプリケーションにおけるab17963の使用に適用されます

アプリケーションノートには、推奨の開始希釈率がありますが、適切な希釈率につきましてはご検討ください。

アプリケーション	Abreviews	特記事項
WB	★★★★★ (4)	1/1000 - 1/10000. Predicted molecular weight: 319 kDa.
IP		Use a concentration of 2 - 10 µg/ml.

ターゲット情報

機能

Stimulates the GTPase activity of Ras. NF1 shows greater affinity for Ras GAP, but lower specific activity. May be a regulator of Ras activity.

関連疾患

Defects in NF1 are the cause of neurofibromatosis type 1 (NF1) [MIM:162200]; also known as von Recklinghausen syndrome. A disease characterized by patches of skin pigmentation (cafe-au-lait spots), Lisch nodules of the iris, tumors in the peripheral nervous system and fibromatous skin tumors. Individuals with the disorder have increased susceptibility to the development of benign and malignant tumors.

Defects in NF1 are a cause of juvenile myelomonocytic leukemia (JMML) [MIM:607785]. JMML is a pediatric myelodysplastic syndrome that constitutes approximately 30% of childhood cases of myelodysplastic syndrome (MDS) and 2% of leukemia. Germline mutations of NF1 account for the association of JMML with type 1 neurofibromatosis (NF1).

Defects in NF1 are the cause of Watson syndrome (WS) [MIM:193520]. WS is characterized by the presence of pulmonary stenosis, cafe-au-lait spots, and mental retardation. WS is considered as an atypical form of NF1.

Defects in NF1 are a cause of familial spinal neurofibromatosis (FSNF) [MIM:162210]. Familial spinal NF is considered to be an alternative form of neurofibromatosis, showing multiple spinal tumors.

Defects in NF1 are a cause of neurofibromatosis-Noonan syndrome (NFNS) [MIM:601321]. NFNS is characterized by manifestations of both NF1 and Noonan syndrome (NS). NS is a disorder characterized by dysmorphic facial features, short stature, hypertelorism, cardiac anomalies, deafness, motor delay, and a bleeding diathesis.

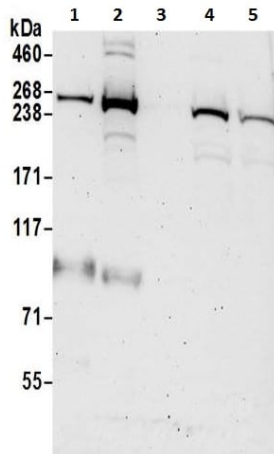
Defects in NF1 may be a cause of colorectal cancer (CRC) [MIM:114500].

配列類似性

Contains 1 CRAL-TRIO domain.

Contains 1 Ras-GAP domain.

画像



Western blot - Anti-Neurofibromin antibody
(ab17963)

All lanes : Anti-Neurofibromin antibody (ab17963) at 0.1 µg/ml

Lane 1 : HeLa whole cell lysate in NETN lysis buffer

Lane 2 : 293T whole cell lysate in NETN lysis buffer

Lane 3 : Jurkat whole cell lysate in NETN lysis buffer

Lane 4 : TCMK-1 whole cell lysate in NETN lysis buffer

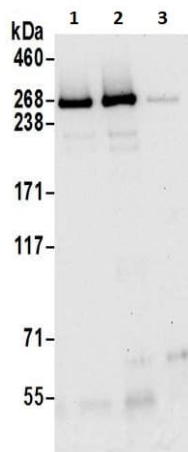
Lane 5 : NIH3T3 whole cell lysate in NETN lysis buffer

Lysates/proteins at 50 µg per lane.

Developed using the ECL technique.

Predicted band size: 319 kDa

Exposure time: 75 seconds



Immunoprecipitation - Anti-Neurofibromin antibody
(ab17963)

Whole cell lysate (0.5-1.0mg per IP reaction; 20% of IP loaded)
from HeLa cells prepared using NETN lysis buffer.

Lane 1: IP using rabbit anti-Neurofibromin antibody.

Lane 2: IP using ab17963 at 6 µg per reaction.

Lane 3: Control IgG.

For western blotting, ab17963 was used at 1 µg/ml.

Please note: All products are "FOR RESEARCH USE ONLY. NOT FOR USE IN DIAGNOSTIC PROCEDURES"

Our Abpromise to you: Quality guaranteed and expert technical support

- Replacement or refund for products not performing as stated on the datasheet
- Valid for 12 months from date of delivery
- Response to your inquiry within 24 hours

- We provide support in Chinese, English, French, German, Japanese and Spanish
- Extensive multi-media technical resources to help you
- We investigate all quality concerns to ensure our products perform to the highest standards

If the product does not perform as described on this datasheet, we will offer a refund or replacement. For full details of the Abpromise, please visit <https://www.abcam.co.jp/abpromise> or contact our technical team.

Terms and conditions

- Guarantee only valid for products bought direct from Abcam or one of our authorized distributors