


Anti-NeuroD2 antibody ab104430

★★★★★ [7 Abreviews](#) [22 References](#) [画像数 5](#)

製品の概要

製品名	Anti-NeuroD2 antibody
製品の詳細	Rabbit polyclonal to NeuroD2
由来種	Rabbit
アプリケーション	適用あり: IHC-P, IHC-Fr, WB
種交差性	交差種: Mouse, Human 交差が予測される動物種: Rat, Rabbit, Gorilla, Chinese hamster 
免疫原	Synthetic peptide corresponding to Mouse NeuroD2 aa 1-100 (N terminal) conjugated to keyhole limpet haemocyanin. (Peptide available as ab124135)
特記事項	<p>The Life Science industry has been in the grips of a reproducibility crisis for a number of years. Abcam is leading the way in addressing this with our range of recombinant monoclonal antibodies and knockout edited cell lines for gold-standard validation. Please check that this product meets your needs before purchasing.</p> <p>If you have any questions, special requirements or concerns, please send us an inquiry and/or contact our Support team ahead of purchase. Recommended alternatives for this product can be found below, along with publications, customer reviews and Q&As</p>

製品の特性

製品の状態	Liquid
保存方法	Shipped at 4°C. Store at +4°C short term (1-2 weeks). Upon delivery aliquot. Store at -20°C or -80°C. Avoid freeze / thaw cycle.
バッファー	pH: 7.40 Preservative: 0.02% Sodium azide Constituent: PBS Batches of this product that have a concentration < 1mg/ml may have BSA added as a stabilising agent. If you would like information about the formulation of a specific lot, please contact our scientific support team who will be happy to help.
精製度	Immunogen affinity purified
ポリ/モノ	ポリクローナル

アプリケーション

The Abpromise guarantee

Abpromise保証は、次のテスト済みアプリケーションにおけるab104430の使用に適用されます

アプリケーションノートには、推奨の開始希釈率がありますが、適切な希釈率につきましてはご確認ください。

アプリケーション	Abreviews	特記事項
IHC-P	★★★★★ (4)	Use at an assay dependent concentration.
IHC-Fr	★★★★★ (1)	1/2000. Tissue was perfusion fixed in 10% formaldehyde. Staining appeared more intense without antigen retrieval.
WB	★★★★★ (1)	Use a concentration of 1 µg/ml. Detects a band of approximately 50 kDa (predicted molecular weight: 41 kDa).

ターゲット情報

機能

Appears to mediate neuronal differentiation.

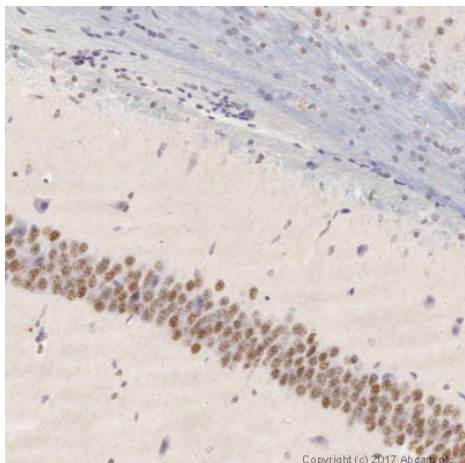
配列類似性

Contains 1 basic helix-loop-helix (bHLH) domain.

細胞内局在

Nucleus.

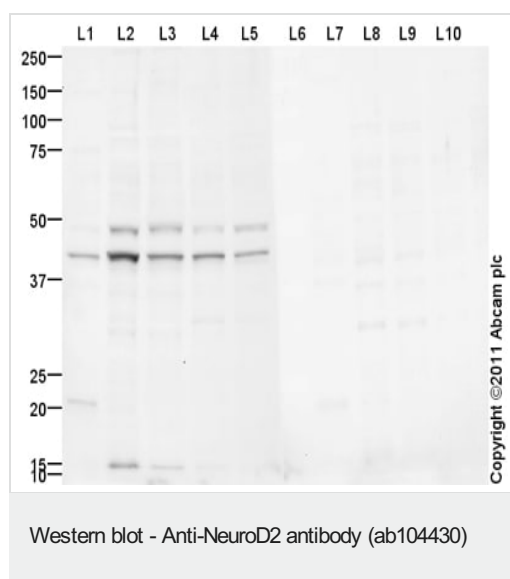
画像



Immunohistochemistry (Formalin/PFA-fixed paraffin-embedded sections) - Anti-NeuroD2 antibody (ab104430)

IHC image of NeuroD2 staining in a formalin fixed, paraffin embedded mouse brain tissue section, performed on a Leica Bond™ system using the standard protocol F. The section was pre-treated using heat mediated antigen retrieval with sodium citrate buffer (pH6, epitope retrieval solution 1) for 20 mins. The section was then incubated with ab104430, 5 µg/ml, for 15 mins at room temperature and detected using an HRP conjugated compact polymer system. DAB was used as the chromogen. The section was then counterstained with haematoxylin and mounted with DPX.

For other IHC staining systems (automated and non-automated) customers should optimize variable parameters such as antigen retrieval conditions, primary antibody concentration and antibody incubation times.



All lanes : Anti-NeuroD2 antibody (ab104430) at 1 µg/ml

Lane 1 : Human brain tissue lysate - total protein ([ab29466](#))

Lane 2 : Cerebellum Mouse Tissue Lysate

Lane 3 : Mouse Hippocampus Tissue Lysate

Lane 4 : P0 Mouse Brain Mouse Tissue Lysate

Lane 5 : P7 Mouse Brain Tissue Lysate

Lane 6 : Human brain tissue lysate - total protein ([ab29466](#)) with Immunising peptide at 1 µg/ml

Lane 7 : Cerebellum Mouse Tissue Lysate with Immunising peptide at 1 µg/ml

Lane 8 : Mouse Hippocampus Tissue Lysate with Immunising peptide at 1 µg/ml

Lane 9 : P0 Mouse Brain Mouse Tissue Lysate with Immunising peptide at 1 µg/ml

Lane 10 : P7 Mouse Brain Tissue Lysate with Immunising peptide at 1 µg/ml

Lysates/proteins at 10 µg per lane.

Secondary

All lanes : Goat Anti-Rabbit IgG H&L (HRP) preadsorbed ([ab97080](#)) at 1/5000 dilution

Developed using the ECL technique.

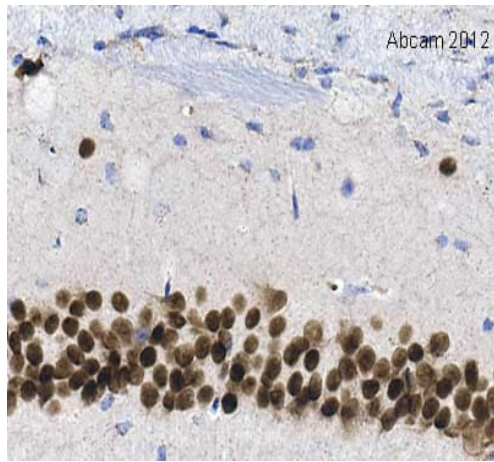
Performed under reducing conditions.

Predicted band size: 41 kDa

Observed band size: 50 kDa

Additional bands at: 21 kDa, 41 kDa. We are unsure as to the identity of these extra bands.

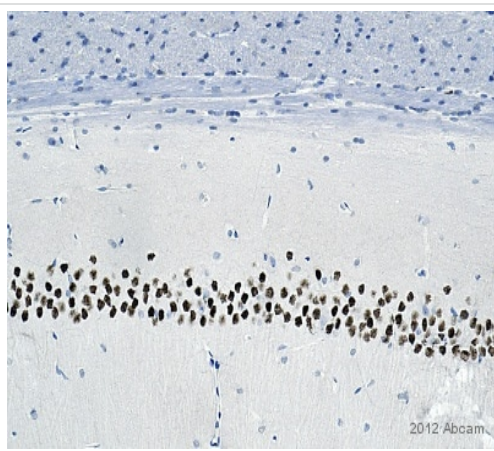
Exposure time: 4 minutes



Immunohistochemistry (Formalin/PFA-fixed paraffin-embedded sections) - Anti-NeuroD2 antibody (ab104430)

This image is courtesy of an abreview submitted by Carl Hobbs, King's College London, United Kingdom

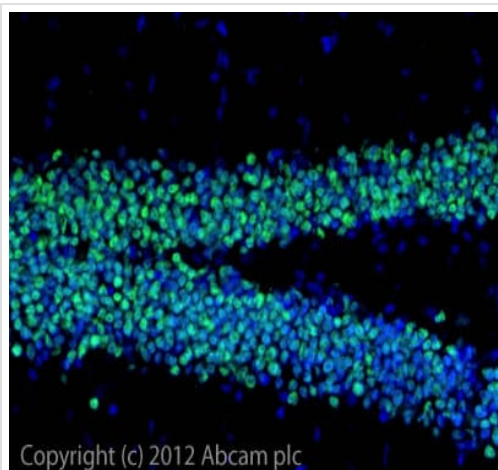
IHC-P image of NeuroD2 staining on mouse CA1 hippocampus sections using ab104430 (1:2000). The sections were deparaffinized and subjected to heat mediated antigen retrieval using citric acid. The sections were then blocked using 1% BSA at 21°C for 10 min. The primary antibody was incubated at 21°C for 2 hours.



Immunohistochemistry (Formalin/PFA-fixed paraffin-embedded sections) - Anti-NeuroD2 antibody (ab104430)

This image is courtesy of an abreview submitted by Carl Hobbs, King's College London, United Kingdom

IHC-P image of NeuroD2 staining on rat CA1 hippocampus sections using ab104430 (1:1000). The sections were deparaffinized and subjected to heat mediated antigen retrieval using citric acid. The sections were then blocked using 1% BSA at 21°C for 10 min. The primary antibody was incubated at 21°C for 2 hours



Immunohistochemistry (Frozen sections) - Anti-NeuroD2 antibody (ab104430)

ab104430 staining NeuroD2 in 10% formaldehyde perfusion fixed 6 week old frozen mouse brain section (dentate gyrus). No antigen retrieval was performed. The section was incubated in 1% BSA / 10% normal goat serum / 0.3M glycine in 0.1% PBS-Tween for 1h to permeabilise the cells and block non-specific protein-protein interactions. The cells were then incubated with the antibody (ab104430, 1/2000 dilution) overnight at +4°C. The secondary antibody (green) was **ab96899**, DyLight® 488 goat anti-rabbit IgG (H+L) used at a 1/250 dilution for 1h. DAPI was used to stain the cell nuclei (blue).

Please note: All products are "FOR RESEARCH USE ONLY. NOT FOR USE IN DIAGNOSTIC PROCEDURES"

Our Abpromise to you: Quality guaranteed and expert technical support

- Replacement or refund for products not performing as stated on the datasheet
- Valid for 12 months from date of delivery
- Response to your inquiry within 24 hours
- We provide support in Chinese, English, French, German, Japanese and Spanish
- Extensive multi-media technical resources to help you
- We investigate all quality concerns to ensure our products perform to the highest standards

If the product does not perform as described on this datasheet, we will offer a refund or replacement. For full details of the Abpromise, please visit <https://www.abcam.co.jp/abpromise> or contact our technical team.

Terms and conditions

- Guarantee only valid for products bought direct from Abcam or one of our authorized distributors