

Anti-NELFe antibody [EPR11600] ab170104

リコンビナント **RabMAb**

★★★★★ **1 Abreviews** **12 References** 画像数 8

製品の概要

製品名	Anti-NELFe antibody [EPR11600]
製品の詳細	Rabbit monoclonal [EPR11600] to NELFe
由来種	Rabbit
アプリケーション	適用あり: Flow Cyt (Intra), WB, ICC/IF, IP 適用なし: IHC-P
種交差性	交差種: Mouse, Rat, Human
免疫原	Recombinant fragment corresponding to Human NELFe.
ポジティブ・コントロール	WB: HeLa, T47-D, HepG2 or 293T lysate, HepG2 cells. Mouse and Rat brain lysates. ICC/IF: HeLa cells. Flow Cyt (intra): HeLa cells. IP: HeLa cells.
特記事項	<p>This product is a recombinant monoclonal antibody, which offers several advantages including:</p> <ul style="list-style-type: none"> - High batch-to-batch consistency and reproducibility - Improved sensitivity and specificity - Long-term security of supply - Animal-free production <p>For more information see here.</p> <p>Our RabMAb[®] technology is a patented hybridoma-based technology for making rabbit monoclonal antibodies. For details on our patents, please refer to RabMAb[®] patents.</p>

製品の特性

製品の状態	Liquid
保存方法	Shipped at 4°C. Store at +4°C short term (1-2 weeks). Upon delivery aliquot. Store at -20°C long term.
バッファー	Preservative: 0.01% Sodium azide Constituents: 59% PBS, 40% Glycerol (glycerin, glycerine), 0.05% BSA
精製度	Protein A purified
ポリ/モノ	モノクローナル
クローン名	EPR11600
アイソタイプ	IgG

アプリケーション

The Abpromise guarantee Abpromise保証は、 次のテスト済みアプリケーションにおけるab170104の使用に適用されます
アプリケーションノートには、推奨の開始希釈率がありますが、適切な希釈率につきましてはご確認ください。

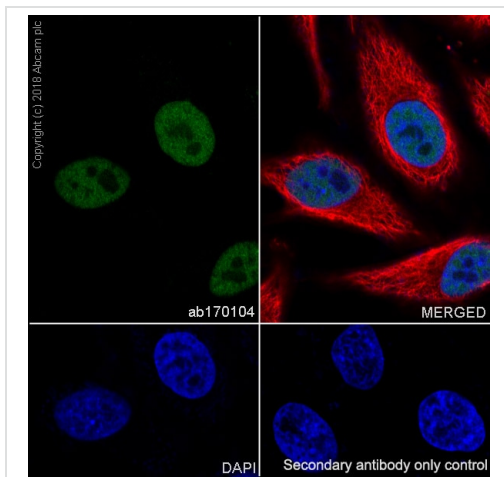
アプリケーション	Abreviews	特記事項
Flow Cyt (Intra)		1/300.
WB	★★★★★ (1)	1/1000 - 1/5000. Predicted molecular weight: 44 kDa.
ICC/IF		1/500. For unpurified use at 1/100 - 1/250.
IP		1/10 - 1/100.

追加情報 Is unsuitable for IHC-P.

ターゲット情報

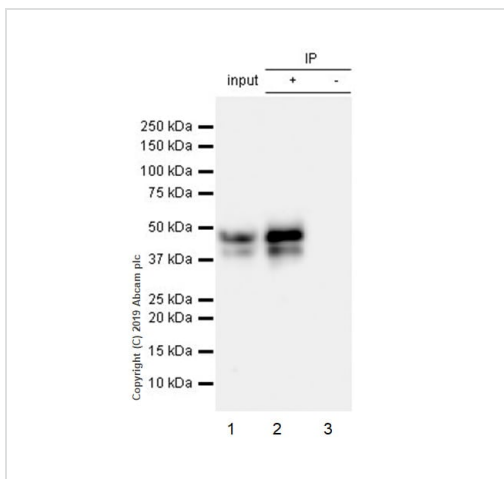
機能	Essential component of the NELF complex, a complex that negatively regulates the elongation of transcription by RNA polymerase II. The NELF complex, which acts via an association with the DSIF complex and causes transcriptional pausing, is counteracted by the P-TEFb kinase complex.
組織特異性	Widely expressed. Expressed in heart, brain, lung, placenta, liver, skeletal muscle, kidney and pancreas.
配列類似性	Belongs to the RRM NELF-E family. Contains 1 RRM (RNA recognition motif) domain.
ドメイン	The RRM domain interacts with RNA, and is essential for NELF complex function. It is however not required for the NELF complex formation.
翻訳後修飾	Sumoylated.
細胞内局在	Nucleus.

画像



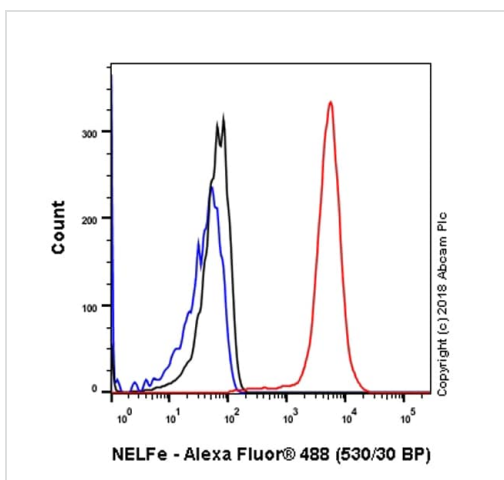
Immunocytochemistry/ Immunofluorescence - Anti-NELFe antibody [EPR11600] (ab170104)

Immunocytochemistry/ Immunofluorescence analysis of HeLa (Human cervix adenocarcinoma epithelial cell) cells labeling NELFe with Purified ab170104 at 1:500 dilution (0.5 µg/ml). Cells were fixed in 4% Paraformaldehyde and permeabilized with 0.1% tritonX-100. Cells were counterstained with Ab195889 Anti-alpha Tubulin antibody [DM1A] - Microtubule Marker (Alexa Fluor® 594) 1:200 (2.5 µg/ml). Goat anti rabbit IgG (Alexa Fluor® 488, **ab150077**) was used as the secondary antibody at 1:1000 (2 µg/ml) dilution. DAPI nuclear counterstain. PBS instead of the primary antibody was used as the secondary antibody only control.



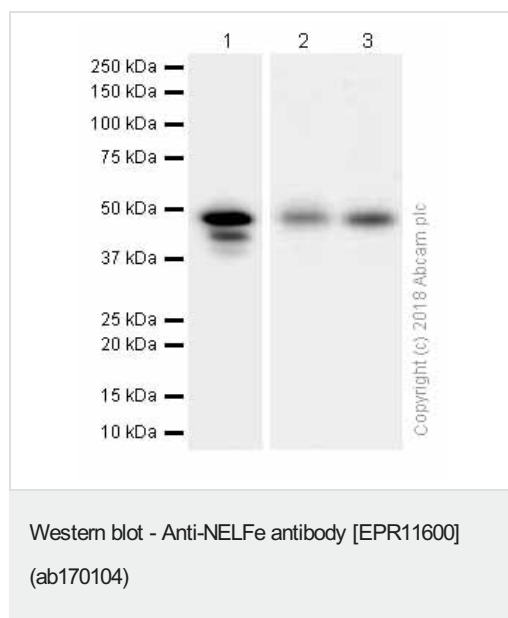
Immunoprecipitation - Anti-NELFe antibody [EPR11600] (ab170104)

ab170104 (purified) at 1:20 dilution (2µg) immunoprecipitating NELFe in HeLa whole cell lysate.
Lane 1 (input): HeLa (Human cervix adenocarcinoma epithelial cell) whole cell lysate 10µg
Lane 2 (+): ab170104 & HeLa whole cell lysate
Lane 3 (-): Rabbit monoclonal IgG (**ab172730**) instead of ab170104 in HeLa whole cell lysate
For western blotting, VeriBlot for IP Detection Reagent (HRP) (**ab131366**) was used for detection at 1:1000 dilution.
Blocking and diluting buffer: 5% NFDm/TBST.



Flow Cytometry (Intracellular) - Anti-NELFe antibody [EPR11600] (ab170104)

Intracellular Flow Cytometry analysis of HeLa (Human cervix adenocarcinoma epithelial cell) cells labeling NELFe with Purified ab170104 at 1/300 dilution (1 µg/ml) (red). Cells were fixed with 4% Paraformaldehyde. A Goat anti rabbit IgG (Alexa Fluor® 488, **ab150077**) secondary antibody was used at 1/2000. Isotype control - Rabbit monoclonal IgG (Black). Unlabeled control - Cell without incubation with primary antibody and secondary antibody (Blue).



All lanes : Anti-NELFe antibody [EPR11600] (ab170104) at 1/5000 dilution (Purified)

Lane 1 : HeLa (Human cervix adenocarcinoma epithelial cell) whole cell lysates

Lane 2 : Mouse brain lysates

Lane 3 : Rat brain lysates

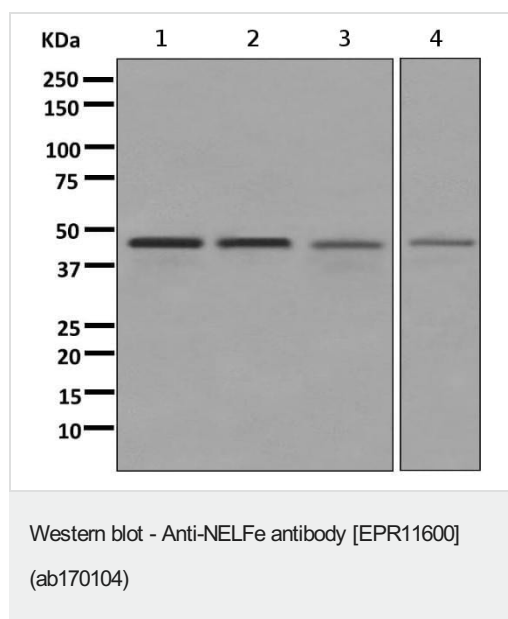
Lysates/proteins at 20 µg per lane.

Secondary

All lanes : Goat Anti-Rabbit IgG H&L (HRP) ([ab97051](#)) at 1/20000 dilution

Predicted band size: 44 kDa

Observed band size: 44 kDa



All lanes : Anti-NELFe antibody [EPR11600] (ab170104) at 1/1000 dilution

Lane 1 : HeLa cell lysate

Lane 2 : T47-D cell lysate

Lane 3 : HepG2 cell lysate

Lane 4 : 293T cell lysate

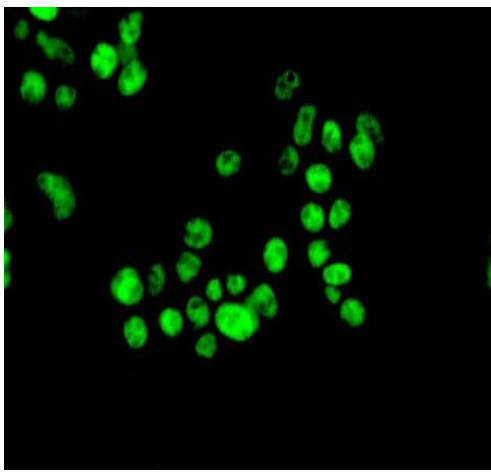
Lysates/proteins at 10 µg per lane.

Secondary

All lanes : HRP labelled goat anti-rabbit at 1/2000 dilution

Predicted band size: 44 kDa

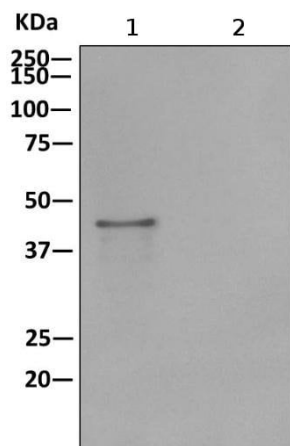
This image was generated using the unpurified version of the product.



Immunocytochemistry/ Immunofluorescence - Anti-NELFe antibody [EPR11600] (ab170104)

Immunofluorescence analysis of HepG2 cells labeling NELFe with ab170104 at a 1/100 dilution.

This image was generated using the unpurified version of the product.



Immunoprecipitation - Anti-NELFe antibody [EPR11600] (ab170104)

Western blot analysis on immunoprecipitation pellet from HeLa cell lysate (lane 1) or 1X PBS (negative control) (lane 2) using ab170104, and HRP-conjugated anti-rabbit IgG preferentially detecting the non-reduced form of rabbit IgG.

This image was generated using the unpurified version of the product.

Why choose a recombinant antibody?



Research with confidence
Consistent and reproducible results



Long-term and scalable supply
Recombinant technology



Success from the first experiment
Confirmed specificity



Ethical standards compliant
Animal-free production

Anti-NELFe antibody [EPR11600] (ab170104)

Please note: All products are "FOR RESEARCH USE ONLY. NOT FOR USE IN DIAGNOSTIC PROCEDURES"

Our Abpromise to you: Quality guaranteed and expert technical support

- Replacement or refund for products not performing as stated on the datasheet
- Valid for 12 months from date of delivery
- Response to your inquiry within 24 hours
- We provide support in Chinese, English, French, German, Japanese and Spanish
- Extensive multi-media technical resources to help you
- We investigate all quality concerns to ensure our products perform to the highest standards

If the product does not perform as described on this datasheet, we will offer a refund or replacement. For full details of the Abpromise, please visit <https://www.abcam.co.jp/abpromise> or contact our technical team.

Terms and conditions

- Guarantee only valid for products bought direct from Abcam or one of our authorized distributors