


### Anti-NEK6 antibody [EPR5282] ab109177

KO 評価済 リコンビナント RabMAb

#### 1 References [画像数 3](#)

#### 製品の概要

製品名	Anti-NEK6 antibody [EPR5282]
製品の詳細	Rabbit monoclonal [EPR5282] to NEK6
由来種	Rabbit
アプリケーション	<b>適用あり:</b> WB <b>適用なし:</b> Flow Cyt, ICC/IF, IHC-P or IP
種交差性	<b>交差種:</b> Human <b>交差が予測される動物種:</b> Rat 
免疫原	Synthetic peptide. This information is proprietary to Abcam and/or its suppliers.
ポジティブ・コントロール	WB: HepG2, HeLa, 293T and HT-1080 cell lysates
特記事項	<p>This product is a recombinant monoclonal antibody, which offers several advantages including:</p> <ul style="list-style-type: none"><li>- High batch-to-batch consistency and reproducibility</li><li>- Improved sensitivity and specificity</li><li>- Long-term security of supply</li><li>- Animal-free production</li></ul> <p>For more information <a href="#">see here</a>.</p> <p>Our RabMAb<sup>®</sup> technology is a patented hybridoma-based technology for making rabbit monoclonal antibodies. For details on our patents, please refer to <a href="#">RabMAb<sup>®</sup> patents</a>.</p> <p>Mouse: We have preliminary internal testing data to indicate this antibody may not react with this species. Please contact us for more information.</p>

#### 製品の特性

製品の状態	Liquid
保存方法	Shipped at 4°C. Store at -20°C. Stable for 12 months at -20°C.
バッファー	pH: 7.20 Preservative: 0.05% Sodium azide Constituents: 0.1% BSA, 40% Glycerol (glycerin, glycerine), 9.85% Tris glycine, 50% Tissue culture supernatant
精製度	Protein A purified

ポリ/モノ	モノクローナル
クローン名	EPR5282
アイソタイプ	IgG

## アプリケーション

**The Abpromise guarantee** **Abpromise保証は、次のテスト済みアプリケーションにおけるab109177の使用に適用されます**  
 アプリケーションノートには、推奨の開始希釈率がありますが、適切な希釈率につきましてはご検討ください。

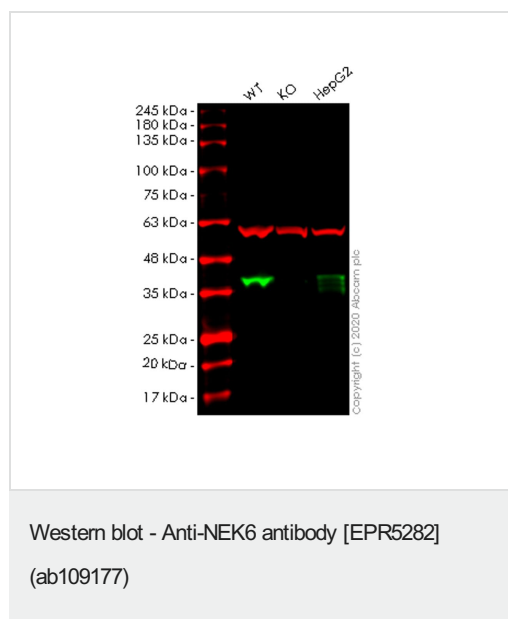
アプリケーション	Abreviews	特記事項
WB		1/1000 - 1/10000. Predicted molecular weight: 36 kDa.

**追加情報** Is unsuitable for Flow Cyt, ICC/IF, IHC-P or IP.

## ターゲット情報

<b>機能</b>	Activated during M phase. Required for chromosome segregation at metaphase-anaphase transition and therefore for mitotic progression. Inhibition of activity results in apoptosis. Phosphorylates KIF11 to promote mitotic spindle formation.
<b>組織特異性</b>	Ubiquitous, with highest expression in heart and skeletal muscle.
<b>配列類似性</b>	Belongs to the protein kinase superfamily. NEK Ser/Thr protein kinase family. NIMA subfamily. Contains 1 protein kinase domain.
<b>翻訳後修飾</b>	Autophosphorylated.
<b>細胞内局在</b>	Cytoplasm. Nucleus.

## 画像



**All lanes** : Anti-NEK6 antibody [EPR5282] (ab109177) at 1/1000 dilution

**Lane 1** : Wild-type HeLa cell lysate

**Lane 2** : NEK6 knockout HeLa cell lysate

**Lane 3** : HepG2 cell lysate

Lysates/proteins at 20 µg per lane.

### Secondary

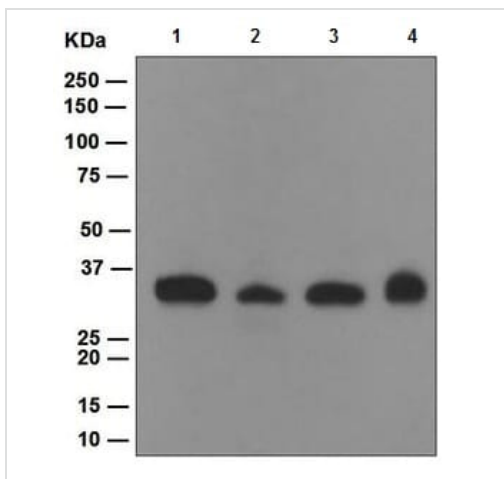
**All lanes** : Goat anti-Rabbit IgG H&L (IRDye® 800CW) preadsorbed (**ab216773**) at 1/10000 dilution

**Predicted band size:** 36 kDa

**Observed band size:** 36 kDa

**Lanes 1-3:** Merged signal (red and green). Green - ab109177 observed at 36 kDa. Red - loading control **ab7291** observed at 50 kDa.

ab109177 Anti-NEK6 antibody [EPR5282] was shown to specifically react with NEK6 in wild-type HeLa cells. Loss of signal was observed when knockout cell line **ab265910** (knockout cell lysate **ab258072**) was used. Wild-type and NEK6 knockout samples were subjected to SDS-PAGE. ab109177 and Anti-alpha Tubulin antibody [DM1A] - Loading Control (**ab7291**) were incubated overnight at 4°C at 1 in 1000 dilution and 1 in 20000 dilution respectively. Blots were developed with Goat anti-Rabbit IgG H&L (IRDye® 800CW) preadsorbed (**ab216773**) and Goat anti-Mouse IgG H&L (IRDye® 680RD) preadsorbed (**ab216776**) secondary antibodies at 1 in 20000 dilution for 1 hour at room temperature before imaging.



Western blot - Anti-NEK6 antibody [EPR5282]  
(ab109177)

**All lanes :** Anti-NEK6 antibody [EPR5282] (ab109177) at 1/1000 dilution

**Lane 1 :** HepG2 lysate

**Lane 2 :** HeLa cell lysate

**Lane 3 :** 293T cell lysate

**Lane 4 :** HT-1080 cell lysate

Lysates/proteins at 10 µg per lane.

**Predicted band size:** 36 kDa

Why choose a recombinant antibody?



**Research with confidence**  
Consistent and reproducible results

**Long-term and scalable supply**  
Recombinant technology

**Success from the first experiment**  
Confirmed specificity

**Ethical standards compliant**  
Animal-free production

Anti-NEK6 antibody [EPR5282] (ab109177)

**Please note:** All products are "FOR RESEARCH USE ONLY. NOT FOR USE IN DIAGNOSTIC PROCEDURES"

### Our Abpromise to you: Quality guaranteed and expert technical support

---

- Replacement or refund for products not performing as stated on the datasheet
- Valid for 12 months from date of delivery
- Response to your inquiry within 24 hours
- We provide support in Chinese, English, French, German, Japanese and Spanish
- Extensive multi-media technical resources to help you
- We investigate all quality concerns to ensure our products perform to the highest standards

If the product does not perform as described on this datasheet, we will offer a refund or replacement. For full details of the Abpromise, please visit <https://www.abcam.co.jp/abpromise> or contact our technical team.

### Terms and conditions

---

- Guarantee only valid for products bought direct from Abcam or one of our authorized distributors