

Anti-Nectin-4 antibody [EPR21192-126] - BSA and Azide free (Capture) ab270315

リコンビナント **RabMAb**

画像数 2

製品の概要

製品名	Anti-Nectin-4 antibody [EPR21192-126] - BSA and Azide free (Capture)
製品の詳細	Rabbit monoclonal [EPR21192-126] to Nectin-4 - BSA and Azide free (Capture)
由来種	Rabbit
アプリケーション	適用あり: Sandwich ELISA
種交差性	交差種: Human
免疫原	Recombinant fragment. This information is proprietary to Abcam and/or its suppliers.
特記事項	<p>ab270315 is a BSA and Azide Free antibody supplied in an unconjugated format and it is suitable for sandwich ELISAs to quantify Human Nectin-4. The recommended pair for sandwich ELISA is:</p> <p>Capture: ab270315, Human Nectin-4 Capture Antibody (unconjugated) Detector: ab270316, Human Nectin-4 Detector Antibody (unconjugated)</p> <p>The reference range value is 125 - 8000 pg/ml.</p> <p>Our carrier-free antibodies are typically supplied in a PBS-only formulation, purified and free of BSA, sodium azide and glycerol. The carrier-free buffer and high concentration allow for increased conjugation efficiency.</p> <p>This conjugation-ready format is designed for use with fluorochromes, metal isotopes, oligonucleotides, and enzymes, which makes them ideal for antibody labelling, functional and cell-based assays, flow-based assays (e.g. mass cytometry) and Multiplex Imaging applications.</p> <p>Use our conjugation kits for antibody conjugates that are ready-to-use in as little as 20 minutes with <1 minute hands-on-time and 100% antibody recovery: available for fluorescent dyes, HRP, biotin and gold.</p> <p>The recommended antibody orientation is based on internal optimization for ELISA-based assays. Antibody orientation is assay dependent and needs to be optimized for each assay type. Please note that the range provided for this antibody is only an estimation based on the performance of the product using the recommended antibody pair. Performance of the antibody pair will depend on the specific characteristics of your assay. We guarantee the product works in sandwich ELISA, but we do not guarantee the sensitivity or dynamic range of the antibody in your assay.</p> <p>This product is a recombinant monoclonal antibody, which offers several advantages including:</p>

- High batch-to-batch consistency and reproducibility
- Improved sensitivity and specificity
- Long-term security of supply
- Animal-free production

For more information [see here](#).

Our RabMAb[®] technology is a patented hybridoma-based technology for making rabbit monoclonal antibodies. For details on our patents, please refer to [RabMAb[®] patents](#).

製品の特徴

製品の状態	Liquid
保存方法	Shipped at 4°C. Store at +4°C.
バッファー	Constituent: 100% PBS
キャリア・フリー	はい
精製度	Protein A purified
ポリ/モノ	モノクローナル
クローン名	EPR21192-126
アイソタイプ	IgG

アプリケーション

The Abpromise guarantee **Abpromise保証は、次のテスト済みアプリケーションにおけるab270315の使用に適用されます**
 アプリケーションノートには、推奨の開始希釈率がありますが、適切な希釈率につきましてはご検討ください。

アプリケーション	Abreviews	特記事項
Sandwich ELISA		Use at an assay dependent concentration. Can be paired for Sandwich ELISA with PE / R-Phycoerythrin Conjugation Kit - Lightning-Link[®] (ab102918) and Biotinylation Kit / Biotin Conjugation Kit (Fast and Type A) - Lightning-Link[®] (ab201795) .

ターゲット情報

機能	Seems to be involved in cell adhesion through trans-homophilic and -heterophilic interactions, the latter including specifically interactions with PVRL2/nectin-1. Does not act as receptor for alpha-herpesvirus entry into cells.
組織特異性	Predominantly expressed in placenta. Not detected in normal breast epithelium but expressed in breast carcinoma.
関連疾患	Defects in PVRL4 are the cause of ectodermal dysplasia-syndactyly syndrome type 1 (EDSS1) [MIM:613573]. EDSS1 is a form of ectodermal dysplasia, a heterogeneous group of disorders due to abnormal development of two or more ectodermal structures. EDSS1 is characterized by the association of hair and teeth abnormalities with cutaneous syndactyly of the hands and/or feet. Hair morphologic abnormalities include twists at irregular intervals (pilli torti) and swelling along the shafts, particularly associated with areas of breakage. Dental findings consist of abnormally

widely spaced teeth, with peg-shaped and conical crowns. Patients have normal sweating.

配列類似性

Belongs to the nectin family.

Contains 2 Ig-like C2-type (immunoglobulin-like) domains.

Contains 1 Ig-like V-type (immunoglobulin-like) domain.

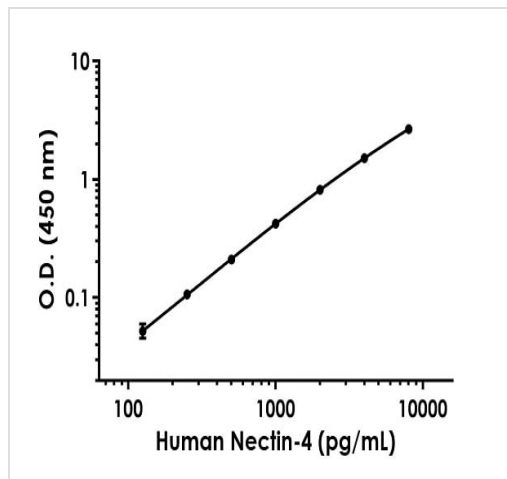
翻訳後修飾

The soluble form is produced by proteolytic cleavage at the cell surface (shedding), probably by ADAM17/TACE.

細胞内局在

Cell membrane. Cell junction > adherens junction. Colocalizes with MLLT4 at cadherin-based adherens junctions and Secreted. The secreted form is found in breast tumor patients.





画像



Representative standard curve from corresponding SimpleStep ELISA® Kit ([ab264607](#)).

Sandwich ELISA - Anti-Nectin-4 antibody
[EPR21192-126] - BSA and Azide free (Capture)
(ab270315)

Why choose a recombinant antibody?

-  **Research with confidence**
Consistent and reproducible results
-  **Long-term and scalable supply**
Recombinant technology
-  **Success from the first experiment**
Confirmed specificity
-  **Ethical standards compliant**
Animal-free production

Anti-Nectin-4 antibody [EPR21192-126] - BSA and Azide free (Capture) (ab270315)

Please note: All products are "FOR RESEARCH USE ONLY. NOT FOR USE IN DIAGNOSTIC PROCEDURES"

Our Abpromise to you: Quality guaranteed and expert technical support

- Replacement or refund for products not performing as stated on the datasheet
- Valid for 12 months from date of delivery
- Response to your inquiry within 24 hours

- We provide support in Chinese, English, French, German, Japanese and Spanish
- Extensive multi-media technical resources to help you
- We investigate all quality concerns to ensure our products perform to the highest standards

If the product does not perform as described on this datasheet, we will offer a refund or replacement. For full details of the Abpromise, please visit <https://www.abcam.co.jp/abpromise> or contact our technical team.

Terms and conditions

- Guarantee only valid for products bought direct from Abcam or one of our authorized distributors