

Anti-NDUFA4L2 antibody ab74138

★★★★☆ [2 Abreviews](#) [4 References](#) [画像数 1](#)

製品の概要

| | |
|----------|---|
| 製品名 | Anti-NDUFA4L2 antibody |
| 製品の詳細 | Rabbit polyclonal to NDUFA4L2 |
| 由来種 | Rabbit |
| アプリケーション | 適用あり: WB, ELISA |
| 種交差性 | 交差種: Mouse, Human |
| 免疫原 | Synthetic peptide derived from an internal sequence of human NDUFA4L2. |
| 特記事項 | <p>The Life Science industry has been in the grips of a reproducibility crisis for a number of years. Abcam is leading the way in addressing this with our range of recombinant monoclonal antibodies and knockout edited cell lines for gold-standard validation. Please check that this product meets your needs before purchasing.</p> <p>If you have any questions, special requirements or concerns, please send us an inquiry and/or contact our Support team ahead of purchase. Recommended alternatives for this product can be found below, along with publications, customer reviews and Q&As</p> |

製品の特性

| | |
|--------|---|
| 製品の状態 | Liquid |
| 保存方法 | Shipped at 4°C. Upon delivery aliquot and store at -20°C. Avoid repeated freeze / thaw cycles. |
| バッファー | <p>pH: 7.40</p> <p>Preservative: 0.02% Sodium azide</p> <p>Constituents: 50% Glycerol (glycerin, glycerine), 0.87% Sodium chloride, PBS</p> |
| 精製度 | Without Mg ²⁺ and Ca ²⁺ |
| ポリ/モノ | ポリクローナル |
| アイソタイプ | IgG |

アプリケーション

The Abpromise guarantee

Abpromise保証は、次のテスト済みアプリケーションにおけるab74138の使用に適用されます

アプリケーションノートには、推奨の開始希釈率がありますが、適切な希釈率につきましてはご確認ください。

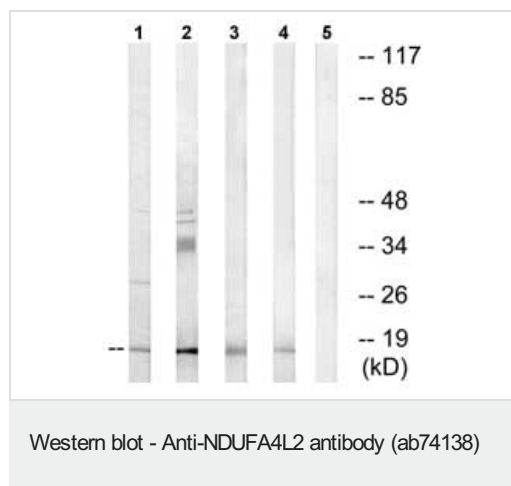
| アプリケーション | Abreviews | 特記事項 |
|----------|-----------|---|
| WB | ★☆☆☆☆ (1) | 1/500 - 1/1000. Detects a band of approximately <19 kDa (predicted molecular weight: 10 kDa). |
| ELISA | | Use at an assay dependent concentration. |

ターゲット情報

配列類似性

Belongs to the complex I NDUFA4 subunit family.

画像



All lanes : Anti-NDUFA4L2 antibody (ab74138) at 1/500 dilution

Lane 1 : Extracts from Jurkat cells

Lane 2 : Extracts from COLO cells

Lane 3 : Extracts from HUVEC cells

Lane 4 : Extracts from HepG2 cells

Lane 5 : Extracts from HepG2 cells with immunising peptide at 5 µg

Lysates/proteins at 5 µg per lane.

Predicted band size: 10 kDa

Observed band size: <19 kDa

Please note: All products are "FOR RESEARCH USE ONLY. NOT FOR USE IN DIAGNOSTIC PROCEDURES"

Our Abpromise to you: Quality guaranteed and expert technical support

- Replacement or refund for products not performing as stated on the datasheet
- Valid for 12 months from date of delivery
- Response to your inquiry within 24 hours
- We provide support in Chinese, English, French, German, Japanese and Spanish
- Extensive multi-media technical resources to help you
- We investigate all quality concerns to ensure our products perform to the highest standards

If the product does not perform as described on this datasheet, we will offer a refund or replacement. For full details of the Abpromise, please visit <https://www.abcam.co.jp/abpromise> or contact our technical team.

Terms and conditions

- Guarantee only valid for products bought direct from Abcam or one of our authorized distributors