

### Anti-NDUFA10 antibody [EPR12135] ab174829

リコンビナント **RabMAb**

**3 References**   [画像数 6](#)

#### 製品の概要

|              |  |
|--------------|--|
| 製品名          | Anti-NDUFA10 antibody [EPR12135]   |
| 製品の詳細        | Rabbit monoclonal [EPR12135] to NDUFA10  |
| 由来種          | Rabbit   |
| アプリケーション     | <b>適用あり:</b> WB, ICC/IF, IP, IHC-P<br><b>適用なし:</b> Flow Cyt  |
| 種交差性         | <b>交差種:</b> Human  |
| 免疫原          | Synthetic peptide. This information is proprietary to Abcam and/or its suppliers.  |
| ポジティブ・コントロール | HepG2, HeLa, Jurkat, Raji and Human fetal heart lysates; Human heart and kidney tissues; HeLa cells.   |
| 特記事項         | <p>This product is a recombinant monoclonal antibody, which offers several advantages including:</p> <ul style="list-style-type: none"> <li>- High batch-to-batch consistency and reproducibility</li> <li>- Improved sensitivity and specificity</li> <li>- Long-term security of supply</li> <li>- Animal-free production</li> </ul> <p>For more information <a href="#">see here</a>.</p> <p>Our RabMAb<sup>®</sup> technology is a patented hybridoma-based technology for making rabbit monoclonal antibodies. For details on our patents, please refer to <a href="#">RabMAb<sup>®</sup> patents</a>.</p> <p>Mouse, Rat: We have preliminary internal testing data to indicate this antibody may not react with these species. Please contact us for more information.</p> |

#### 製品の特性

|       |   |
|-------|---|
| 製品の状態 | Liquid  |
| 保存方法  | Shipped at 4°C. Store at +4°C short term (1-2 weeks). Upon delivery aliquot. Store at -20°C. Avoid freeze / thaw cycle.                             |
| バッファー | pH: 7.20<br>Preservative: 0.01% Sodium azide<br>Constituents: 9% PBS, 40% Glycerol (glycerin, glycerine), 0.05% BSA, 50% Tissue culture supernatant |
| 精製度   | Tissue culture supernatant  |

|        |          |
|--------|----------|
| ポリモノ   | モノクローナル  |
| クローン名  | EPR12135 |
| アイソタイプ | IgG      |

## アプリケーション

**The Abpromise guarantee**      **Abpromise保証は、** 次のテスト済みアプリケーションにおけるab174829の使用に適用されます  
アプリケーションノートには、推奨の開始希釈率がありますが、適切な希釈率につきましてはご検討ください。

| アプリケーション | Abreviews | 特記事項   |
|----------|-----------|--|
| WB       |           | 1/1000 - 1/5000. Detects a band of approximately 37 kDa (predicted molecular weight: 41 kDa).                                |
| ICC/IF   |           | 1/50 - 1/100.  |
| IP       |           | 1/10 - 1/100.  |
| IHC-P    |           | 1/50 - 1/100. Perform heat mediated antigen retrieval with citrate buffer pH 6 before commencing with IHC staining protocol. |

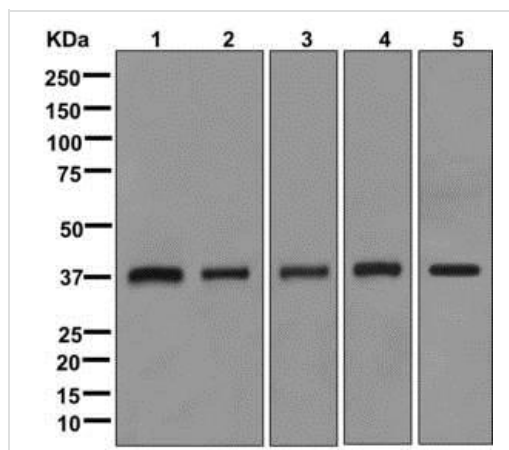
**追加情報**      Is unsuitable for Flow Cyt.

## ターゲット情報

**関連性**      NDUFA10 protein belongs to the complex I 42kDa subunit family. Mammalian complex I is the first enzyme complex in the electron transport chain of mitochondria. It is composed of 45 different subunits. This protein is a component of the hydrophobic protein fraction and has NADH dehydrogenase activity and oxidoreductase activity. It transfers electrons from NADH to the respiratory chain.

**細胞内局在**      Mitochondrion matrix.

## 画像



Western blot - Anti-NDUFA10 antibody [EPR12135] (ab174829)

**All lanes :** Anti-NDUFA10 antibody [EPR12135] (ab174829) at 1/1000 dilution

**Lane 1 :** HepG2 cell lysate

**Lane 2 :** HeLa cell lysate

**Lane 3 :** Jurkat cell lysate

**Lane 4 :** Raji cell lysate

**Lane 5 :** Human fetal heart tissue lysate

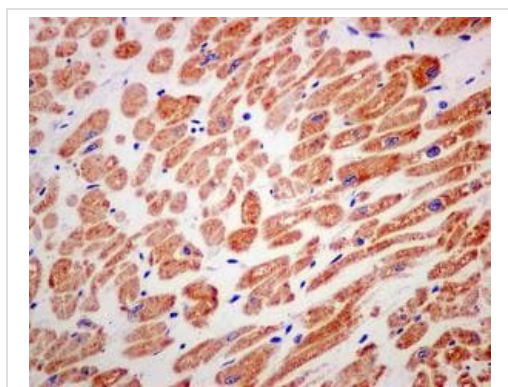
Lysates/proteins at 10 µg per lane.

## Secondary

**All lanes :** Goat anti-rabbit HRP-conjugated at 1/2000 dilution

Developed using the ECL technique.

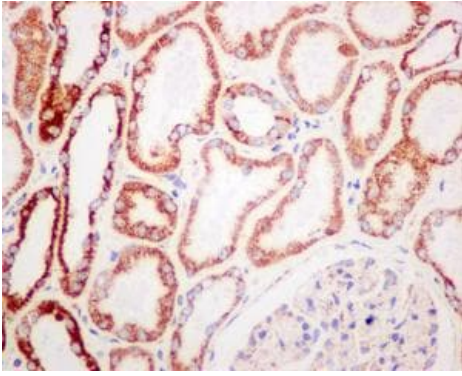
**Predicted band size:** 41 kDa



Immunohistochemistry (Formalin/PFA-fixed paraffin-embedded sections) - Anti-NDUFA10 antibody [EPR12135] (ab174829)

Immunohistochemical analysis of formalin-fixed, paraffin-embedded Human heart tissue, labeling NDUFA10 with ab174829 at 1/50 dilution.

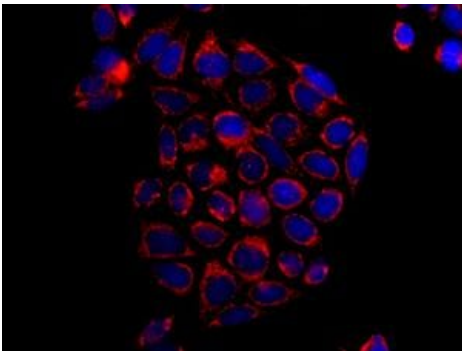
Perform heat mediated antigen retrieval with citrate buffer pH 6 before commencing with IHC staining protocol.



Immunohistochemistry (Formalin/PFA-fixed paraffin-embedded sections) - Anti-NDUF A10 antibody [EPR12135] (ab174829)

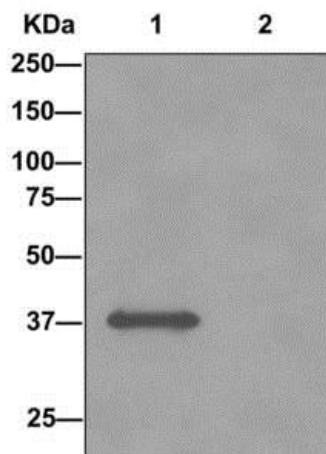
Immunohistochemical analysis of formalin-fixed, paraffin-embedded Human kidney tissue, labeling NDUF A10 with ab174829 at 1/50 dilution.

Perform heat mediated antigen retrieval with citrate buffer pH 6 before commencing with IHC staining protocol.



Immunocytochemistry/ Immunofluorescence - Anti-NDUF A10 antibody [EPR12135] (ab174829)

Immunofluorescent analysis of HeLa cells, labeling NDUF A10 with ab174829 at 1/50 dilution (red). DAPI nuclear staining (blue).



Immunoprecipitation - Anti-NDUF A10 antibody [EPR12135] (ab174829)

Western blot analysis on Immunoprecipitation pellet from either 1) Human fetal heart lysate, or 2) 1x PBS (negative control); labeling NDUF A10, immunoprecipitated using ab174829 at 1/10 dilution and HRP-conjugated anti-rabbit IgG preferentially detecting the non-reduced form of rabbit IgG.

### Why choose a recombinant antibody?



**Research with confidence**  
Consistent and reproducible results



**Long-term and scalable supply**  
Recombinant technology



**Success from the first experiment**  
Confirmed specificity



**Ethical standards compliant**  
Animal-free production

Anti-NDUFA10 antibody [EPR12135] (ab174829)

**Please note:** All products are "FOR RESEARCH USE ONLY. NOT FOR USE IN DIAGNOSTIC PROCEDURES"

### Our Abpromise to you: Quality guaranteed and expert technical support

---

- Replacement or refund for products not performing as stated on the datasheet
- Valid for 12 months from date of delivery
- Response to your inquiry within 24 hours
- We provide support in Chinese, English, French, German, Japanese and Spanish
- Extensive multi-media technical resources to help you
- We investigate all quality concerns to ensure our products perform to the highest standards

If the product does not perform as described on this datasheet, we will offer a refund or replacement. For full details of the Abpromise, please visit <https://www.abcam.co.jp/abpromise> or contact our technical team.

### Terms and conditions

---

- Guarantee only valid for products bought direct from Abcam or one of our authorized distributors