

Anti-Natriuretic peptides A antibody [EPR22089-283] ab225844

リコンビナント RabMAb

9 References [画像数 8](#)

製品の概要

製品名	Anti-Natriuretic peptides A antibody [EPR22089-283]
製品の詳細	Rabbit monoclonal [EPR22089-283] to Natriuretic peptides A
由来種	Rabbit
アプリケーション	適用あり: IHC-Fr, IHC-P, IP, WB
種交差性	交差種: Mouse, Rat
免疫原	Synthetic peptide. This information is proprietary to Abcam and/or its suppliers.
ポジティブ・コントロール	WB: Mouse and rat heart tissue lysate. IHC-P: Mouse heart and heart atrium tissues; Rat heart atrium tissue. IHC-Fr: Mouse and rat heart tissues. IP: Mouse heart tissue lysate.
特記事項	<p>This product is a recombinant monoclonal antibody, which offers several advantages including:</p> <ul style="list-style-type: none">- High batch-to-batch consistency and reproducibility- Improved sensitivity and specificity- Long-term security of supply- Animal-free production <p>For more information see here.</p> <p>Our RabMAb[®] technology is a patented hybridoma-based technology for making rabbit monoclonal antibodies. For details on our patents, please refer to RabMAb[®] patents.</p>

製品の特性

製品の状態	Liquid
保存方法	Shipped at 4°C. Store at +4°C short term (1-2 weeks). Upon delivery aliquot. Store at -20°C long term. Avoid freeze / thaw cycle.
バッファー	pH: 7.2 Preservative: 0.01% Sodium azide Constituents: PBS, 40% Glycerol (glycerin, glycerine), 0.05% BSA
精製度	Protein A purified
ポリ/モノ	モノクローナル
クローン名	EPR22089-283
アイソタイプ	IgG

アプリケーション

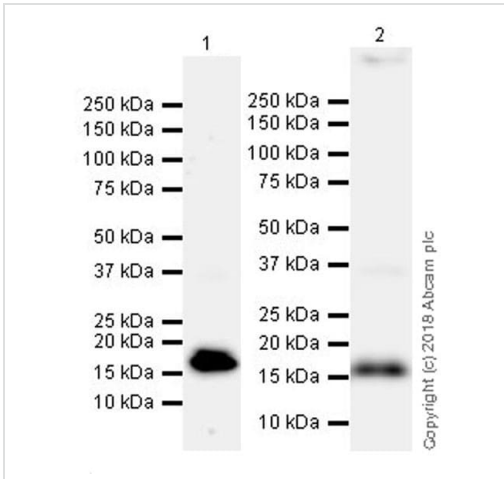
The Abpromise guarantee **Abpromise保証は、次のテスト済みアプリケーションにおけるab225844の使用に適用されず**
アプリケーションノートには、推奨の開始希釈率がありますが、適切な希釈率につきましてはご検討ください。

アプリケーション	Abreviews	特記事項
IHC-Fr		1/100. Perform heat mediated antigen retrieval using sodium citrate buffer (10mM citrate pH 6.0 + 0.05% Tween-20).
IHC-P		1/2000. Perform heat mediated antigen retrieval with Tris/EDTA buffer pH 9.0 before commencing with IHC staining protocol.
IP		1/30.
WB		1/1000. Detects a band of approximately 17 kDa (predicted molecular weight: 16 kDa).

ターゲット情報

機能	Hormone playing a key role in cardiovascular homeostasis through regulation of natriuresis, diuresis, and vasodilation. Also plays a role in female pregnancy by promoting trophoblast invasion and spiral artery remodeling in uterus. Specifically binds and stimulates the cGMP production of the NPR1 receptor. Binds the clearance receptor NPR3.
関連疾患	Atrial standstill 2 Atrial fibrillation, familial, 6
配列類似性	Belongs to the natriuretic peptide family.
翻訳後修飾	Cleaved by CORIN upon secretion to produce the functional hormone. Atrial natriuretic factor: Cleaved by MME. The cleavage initiates degradation of the factor and thereby regulate its activity.
細胞内局在	Secreted.

画像



Western blot - Anti-Natriuretic peptides A antibody [EPR22089-283] (ab225844)

All lanes : Anti-Natriuretic peptides A antibody [EPR22089-283] (ab225844) at 1/1000 dilution

Lane 1 : Mouse heart tissue lysate

Lane 2 : Rat heart tissue lysate

Lysates/proteins at 10 µg per lane.

Secondary

All lanes : Goat Anti-Rabbit IgG H&L (HRP) (**ab97051**) at 1/100000 dilution

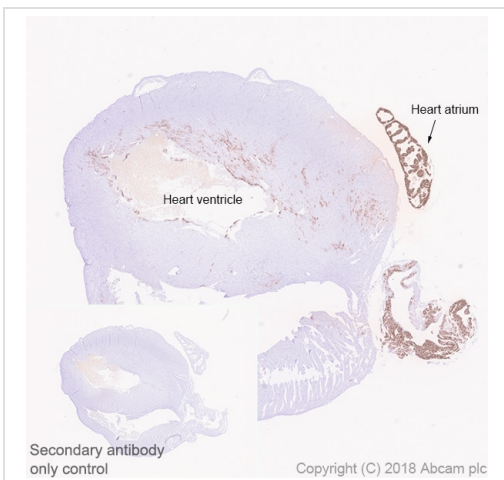
Predicted band size: 16 kDa

Observed band size: 17 kDa

Exposure time : Lane 1: 3 minutes; Lane 2: 8 seconds.

Blocking/Dilution buffer: 5% NFDM/TBST.

The molecular mass observed is consistent with what has been described in the literature (PMID: 16291870).

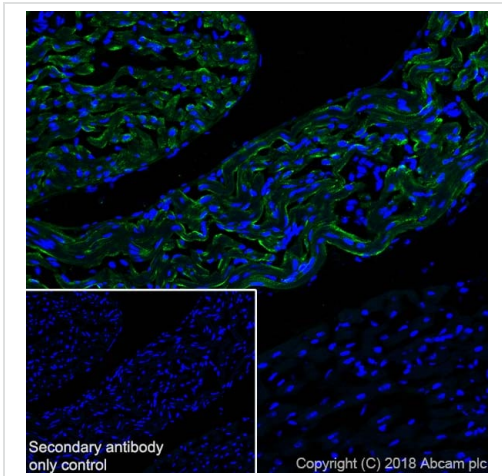


Immunohistochemistry (Formalin/PFA-fixed paraffin-embedded sections) - Anti-Natriuretic peptides A antibody [EPR22089-283] (ab225844)

Immunohistochemical analysis of paraffin-embedded mouse heart tissue labeling Natriuretic peptides A with ab225844 at 1/2000 dilution, followed by Goat Anti-Rabbit IgG H&L (HRP) Ready to use. Strong cytoplasmic staining mainly in the atria and at lower levels in ventricle of mouse heart (PMID: 2942710; PMID:25532015; PMID: 1824903). Counterstained with Hematoxylin.

Secondary antibody only control: Used PBS instead of primary antibody, secondary antibody is Goat Anti-Rabbit IgG H&L (HRP) Ready to use.

Heat mediated antigen retrieval was performed with Tris/EDTA buffer pH 9.0 before commencing with IHC staining protocol.

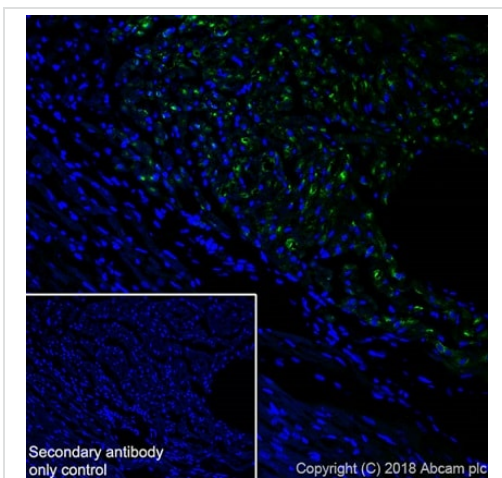


Immunohistochemistry (Frozen sections) - Anti-Natriuretic peptides A antibody [EPR22089-283] (ab225844)

Immunohistochemical analysis of 4% paraformaldehyde-fixed, 0.2% Triton X-100 permeabilized frozen mouse heart tissue labeling Natriuretic peptides A with ab225844 at 1/100 dilution, followed by Goat Anti-Rabbit IgG H&L (Alexa Fluor[®] 488) ([ab150077](#)) secondary antibody at 1/1000 dilution (green). Cytoplasmic staining in cardiac muscle of mouse atrium is observed.

The nuclear counter stain is DAPI (blue).

Secondary antibody only control: Used PBS instead of primary antibody, secondary antibody is Goat Anti-Rabbit IgG H&L (Alexa Fluor[®] 488) ([ab150077](#)) secondary antibody at 1/1000 dilution.

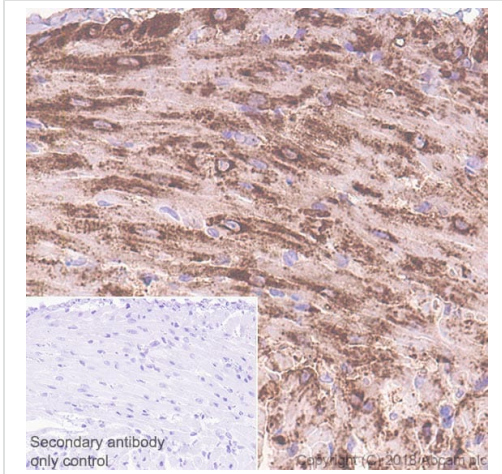


Immunohistochemistry (Frozen sections) - Anti-Natriuretic peptides A antibody [EPR22089-283] (ab225844)

Immunohistochemical analysis of 4% paraformaldehyde-fixed, 0.2% Triton X-100 permeabilized frozen rat heart tissue labeling Natriuretic peptides A with ab225844 at 1/100 dilution, followed by Goat Anti-Rabbit IgG H&L (Alexa Fluor[®] 488) ([ab150077](#)) secondary antibody at 1/1000 dilution (green). Cytoplasmic staining in cardiac muscle of rat atrium is observed.

The nuclear counter stain is DAPI (blue).

Secondary antibody only control: Used PBS instead of primary antibody, secondary antibody is Goat Anti-Rabbit IgG H&L (Alexa Fluor[®] 488) ([ab150077](#)) secondary antibody at 1/1000 dilution.



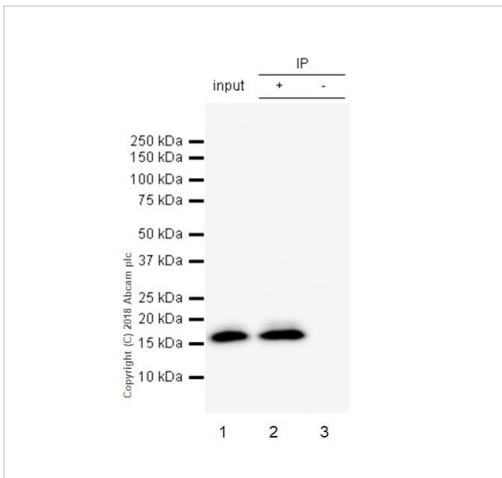
Immunohistochemistry (Formalin/PFA-fixed paraffin-embedded sections) - Anti-Natriuretic peptides A antibody [EPR22089-283] (ab225844)

Immunohistochemical analysis of paraffin-embedded mouse heart atrium tissue labeling Natriuretic peptides A with ab225844 at 1/2000 dilution, followed by Goat Anti-Rabbit IgG H&L (HRP) Ready to use. Cytoplasmic staining in cardiac muscle of mouse atrium (PMID: 2942710; PMID:25532015; PMID: 1824903).

Counterstained with Hematoxylin.

Secondary antibody only control: Used PBS instead of primary antibody, secondary antibody is Goat Anti-Rabbit IgG H&L (HRP) Ready to use.

Heat mediated antigen retrieval was performed with Tris/EDTA buffer pH 9.0 before commencing with IHC staining protocol.



Immunoprecipitation - Anti-Natriuretic peptides A antibody [EPR22089-283] (ab225844)

Natriuretic peptides A was immunoprecipitated from 0.35 mg Mouse heart tissue lysate with ab225844 at 1/1000 dilution. Western blot was performed from the immunoprecipitate using ab225844 at 1/500 dilution. VeriBlot for IP Detection Reagent (HRP) ([ab131366](#)) was used for detection at 1/1000 dilution.

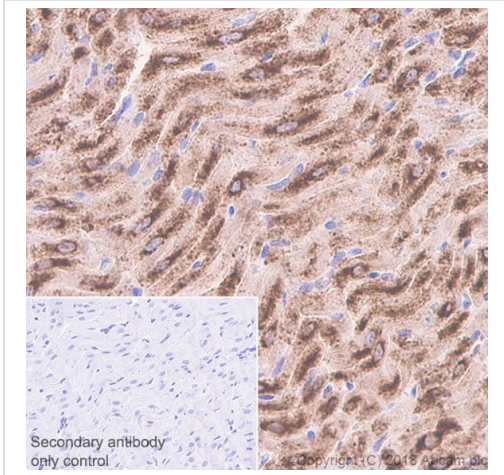
Lane 1: Mouse heart lysate 10 µg (Input).

Lane 2: ab225844 IP in Mouse heart tissue lysate (+).

Lane 3: Rabbit monoclonal IgG ([ab172730](#)) instead of ab225844 in Mouse heart lysate (-).

Blocking and dilution buffer and concentration: 5% NFD/MTBST

Exposure time: 10 seconds



Immunohistochemistry (Formalin/PFA-fixed paraffin-embedded sections) - Anti-Natriuretic peptides A antibody [EPR22089-283] (ab225844)





Immunohistochemical analysis of paraffin-embedded rat heart atrium tissue labeling Natriuretic peptides A with ab225844 at 1/2000 dilution, followed by Goat Anti-Rabbit IgG H&L (HRP) Ready to use. Cytoplasmic staining in cardiac muscle of rat atrium (PMID: 2942710; PMID:25532015; PMID: 1824903).

Counterstained with Hematoxylin.

Secondary antibody only control: Used PBS instead of primary antibody, secondary antibody is Goat Anti-Rabbit IgG H&L (HRP) Ready to use.

Heat mediated antigen retrieval was performed with Tris/EDTA buffer pH 9.0 before commencing with IHC staining protocol.

Why choose a recombinant antibody?

 <p>Research with confidence Consistent and reproducible results</p>	 <p>Long-term and scalable supply Recombinant technology</p>
 <p>Success from the first experiment Confirmed specificity</p>	 <p>Ethical standards compliant Animal-free production</p>

Anti-Natriuretic peptides A antibody [EPR22089-283] (ab225844)

Please note: All products are "FOR RESEARCH USE ONLY. NOT FOR USE IN DIAGNOSTIC PROCEDURES"

Our Abpromise to you: Quality guaranteed and expert technical support

- Replacement or refund for products not performing as stated on the datasheet
- Valid for 12 months from date of delivery

- Response to your inquiry within 24 hours
- We provide support in Chinese, English, French, German, Japanese and Spanish
- Extensive multi-media technical resources to help you
- We investigate all quality concerns to ensure our products perform to the highest standards

If the product does not perform as described on this datasheet, we will offer a refund or replacement. For full details of the Abpromise, please visit <https://www.abcam.co.jp/abpromise> or contact our technical team.

Terms and conditions

- Guarantee only valid for products bought direct from Abcam or one of our authorized distributors