

# Anti-NAT1 antibody [EPR3221(2)] - BSA and Azide free ab247765

リコンビナント RabMAb

画像数 4

### 製品の概要

製品名	Anti-NAT1 antibody [EPR3221(2)] - BSA and Azide free
製品の詳細	Rabbit monoclonal [EPR3221(2)] to NAT1 - BSA and Azide free
由来種	Rabbit
アプリケーション	<b>適用あり:</b> ICC/IF, Flow Cyt (Intra), WB <b>適用なし:</b> IHC-P or IP
種交差性	交差種: Human
免疫原	Synthetic peptide. This information is proprietary to Abcam and/or its suppliers.
ポジティブ・コントロール	Flow Cyt (intra): LNCaP cells
特記事項	<p>ab247765 is the carrier-free version of <a href="#">ab109114</a>.</p> <p>Our <b>carrier-free</b> antibodies are typically supplied in a PBS-only formulation, purified and free of BSA, sodium azide and glycerol. The carrier-free buffer and high concentration allow for increased conjugation efficiency.</p> <p>This conjugation-ready format is designed for use with fluorochromes, metal isotopes, oligonucleotides, and enzymes, which makes them ideal for antibody labelling, functional and cell-based assays, flow-based assays (e.g. mass cytometry) and Multiplex Imaging applications.</p> <p>Use our <b>conjugation kits</b> for antibody conjugates that are ready-to-use in as little as 20 minutes with &lt;1 minute hands-on-time and 100% antibody recovery: available for fluorescent dyes, HRP, biotin and gold.</p> <p>This product is compatible with the Maxpar<sup>®</sup> Antibody Labeling Kit from Fluidigm, without the need for antibody preparation. Maxpar<sup>®</sup> is a trademark of Fluidigm Canada Inc.</p> <p>This product is a recombinant monoclonal antibody, which offers several advantages including:</p> <ul style="list-style-type: none"><li>- High batch-to-batch consistency and reproducibility</li><li>- Improved sensitivity and specificity</li><li>- Long-term security of supply</li><li>- Animal-free production</li></ul> <p>For more information <a href="#">see here</a>.</p> <p>Our RabMAb<sup>®</sup> technology is a patented hybridoma-based technology for making rabbit monoclonal antibodies. For details on our patents, please refer to <a href="#">RabMAb<sup>®</sup> patents</a>.</p>

Mouse, Rat: We have preliminary internal testing data to indicate this antibody may not react with these species. Please contact us for more information.

## 製品の特性

製品の状態	Liquid
保存方法	Shipped at 4°C. Store at +4°C. Do Not Freeze.
バッファー	pH: 7.2 Constituent: PBS
キャリア・フリー	はい
精製度	Protein A purified
ポリ/モノ	モノクローナル
クローン名	EPR3221(2)
アイソタイプ	IgG

## アプリケーション

The Abpromise guarantee **Abpromise保証は、次のテスト済みアプリケーションにおけるab247765の使用に適用されます**  
アプリケーションノートには、推奨の開始希釈率がありますが、適切な希釈率につきましてはご検討ください。

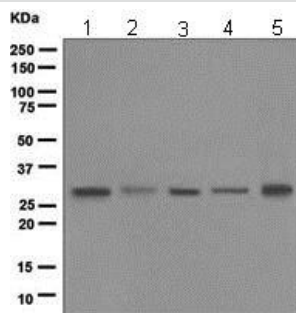
アプリケーション	Abreviews	特記事項
ICC/IF		Use at an assay dependent concentration.
Flow Cyt (Intra)		Use at an assay dependent concentration.
WB		Use at an assay dependent concentration. Predicted molecular weight: 34 kDa.

追加情報 Is unsuitable for IHC-P or IP.

## ターゲット情報

機能	Participates in the detoxification of a plethora of hydrazine and arylamine drugs. Catalyzes the N- or O-acetylation of various arylamine and heterocyclic amine substrates and is able to bioactivate several known carcinogens.
配列類似性	Belongs to the arylamine N-acetyltransferase family.
細胞内局在	Cytoplasm.

## 画像



Western blot - Anti-NAT1 antibody [EPR3221(2)] - BSA and Azide free (ab247765)

**All lanes** : Anti-NAT1 antibody [EPR3221(2)] (**ab109114**) at 1/1000 dilution

**Lane 1** : U937 cell lysate

**Lane 2** : Fetal liver cell lysate

**Lane 3** : LNCaP cell lysate

**Lane 4** : Human bladder cell lysate

**Lane 5** : HT-1376 cell lysate

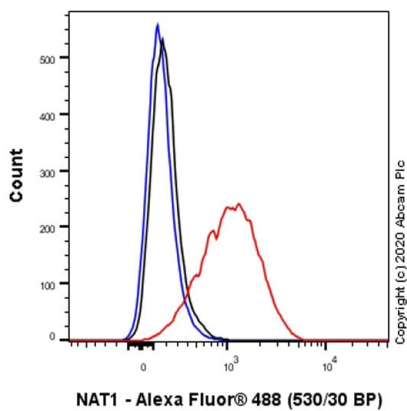
Lysates/proteins at 10 µg per lane.

**Predicted band size:** 34 kDa

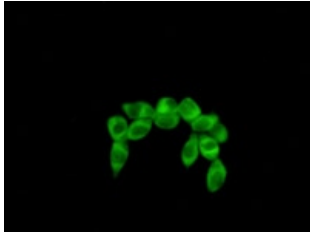
This data was developed using **ab109114**, the same antibody clone in a different buffer formulation.

This data was developed using **ab109114**, the same antibody clone in a different buffer formulation.

Flow Cytometry analysis of LNCaP (Human prostate carcinoma epithelial cell) cells labeling NAT1 with purified **ab109114** at 1/100 dilution (10 µg/mL) (Red). Cells were fixed with 4% Paraformaldehyde and permeabilised with 90% Methanol. A Goat anti rabbit IgG (Alexa Fluor® 488, **ab150077**) secondary antibody was used at 1/2000. Isotype control - Rabbit monoclonal IgG (Black). Unlabeled control - Cell without incubation with primary antibody and secondary antibody (Blue).



Flow Cytometry (Intracellular) - Anti-NAT1 antibody [EPR3221(2)] - BSA and Azide free (ab247765)



This data was developed using **ab109114**, the same antibody clone in a different buffer formulation.

Immunofluorescent staining of LN-CAP cells using anti-NAT1 at 1/100 (**ab109114**).

Immunocytochemistry/ Immunofluorescence - Anti-NAT1 antibody [EPR3221(2)] - BSA and Azide free (ab247765)

### Why choose a recombinant antibody?



**Research with confidence**  
Consistent and reproducible results



**Long-term and scalable supply**  
Recombinant technology



**Success from the first experiment**  
Confirmed specificity



**Ethical standards compliant**  
Animal-free production

Anti-NAT1 antibody [EPR3221(2)] - BSA and Azide free (ab247765)

**Please note:** All products are "FOR RESEARCH USE ONLY. NOT FOR USE IN DIAGNOSTIC PROCEDURES"

### Our Abpromise to you: Quality guaranteed and expert technical support

- Replacement or refund for products not performing as stated on the datasheet
- Valid for 12 months from date of delivery
- Response to your inquiry within 24 hours
- We provide support in Chinese, English, French, German, Japanese and Spanish
- Extensive multi-media technical resources to help you
- We investigate all quality concerns to ensure our products perform to the highest standards

If the product does not perform as described on this datasheet, we will offer a refund or replacement. For full details of the Abpromise, please visit <https://www.abcam.co.jp/abpromise> or contact our technical team.

### Terms and conditions

- Guarantee only valid for products bought direct from Abcam or one of our authorized distributors