

# Anti-N-epsilon acetyl Lysine antibody [11A1] ab409

9 References [画像数 1](#)

### 製品の概要

|          |   |
|----------|---|
| 製品名      | Anti-N-epsilon acetyl Lysine antibody [11A1]  |
| 製品の詳細    | Mouse monoclonal [11A1] to N-epsilon acetyl Lysine  |
| 由来種      | Mouse   |
| アプリケーション | <b>適用あり:</b> WB, ELISA, IHC-P   |
| 種交差性     | <b>交差種:</b> Species independent   |
| 特記事項     | <p>The ability of this antibody to fix complement is unknown.</p> <p>The Life Science industry has been in the grips of a reproducibility crisis for a number of years. Abcam is leading the way in addressing this with our range of recombinant monoclonal antibodies and knockout edited cell lines for gold-standard validation. Please check that this product meets your needs before purchasing.</p> <p>If you have any questions, special requirements or concerns, please send us an inquiry and/or contact our Support team ahead of purchase. Recommended alternatives for this product can be found below, along with publications, customer reviews and Q&amp;As</p> |

### 製品の特性

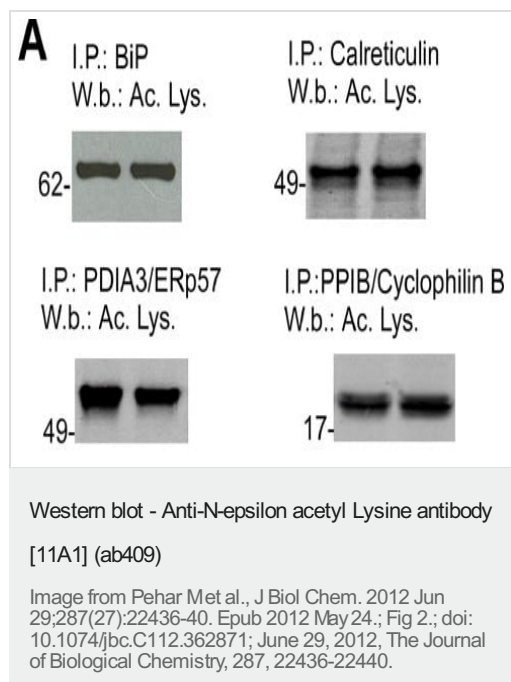
|        |   |
|--------|---|
| 製品の状態  | Liquid  |
| 保存方法   | Shipped at 4°C. Upon delivery aliquot and store at -20°C. Avoid freeze / thaw cycles. |
| バッファー  | Constituents: 0.75% Glycine, 1.21% Tris, 2% Sucrose                                   |
| 精製度    | Protein A purified  |
| ポリ/モノ  | モノクローナル   |
| クローン名  | 11A1  |
| ミエローマ  | unknown   |
| アイソタイプ | IgG1  |
| 軽鎖の種類  | kappa   |

### アプリケーション

**The Abpromise guarantee** **Abpromise保証は、次のテスト済みアプリケーションにおけるab409の使用に適用されます**  
アプリケーションノートには、推奨の開始希釈率がありますが、適切な希釈率につきましてはご検討ください。

| アプリケーション | Abreviews | 特記事項              |
|----------|-----------|-------------------|
| WB       |           | 1/500 - 1/5000.   |
| ELISA    |           | 1/5000 - 1/50000. |
| IHC-P    |           | 1/500 - 1/5000.   |

## 画像



Western Blot analysis showing ab409 staining N-epsilon acetyl Lysine on immunoprecipitated ER-resident proteins from control (non-transfected) H4 cells.

**Please note:** All products are "FOR RESEARCH USE ONLY. NOT FOR USE IN DIAGNOSTIC PROCEDURES"

## Our Abpromise to you: Quality guaranteed and expert technical support

- Replacement or refund for products not performing as stated on the datasheet
- Valid for 12 months from date of delivery
- Response to your inquiry within 24 hours
- We provide support in Chinese, English, French, German, Japanese and Spanish
- Extensive multi-media technical resources to help you
- We investigate all quality concerns to ensure our products perform to the highest standards

If the product does not perform as described on this datasheet, we will offer a refund or replacement. For full details of the Abpromise, please visit <https://www.abcam.co.jp/abpromise> or contact our technical team.

## Terms and conditions

- Guarantee only valid for products bought direct from Abcam or one of our authorized distributors