




Anti-Myelin PLP antibody ab28486

★★★★★ [13 Abreviews](#) [78 References](#) [画像数 2](#)

製品の概要

製品名	Anti-Myelin PLP antibody
製品の詳細	Rabbit polyclonal to Myelin PLP
由来種	Rabbit
特異性	ab28486 recognises PLP
アプリケーション	適用あり: IHC-P
種交差性	交差種: Mouse 交差が予測される動物種: Cow, Dog, Pig, Macaque monkey 
免疫原	Synthetic peptide: CG KGLSATVTGG QKGRGSRG , corresponding to amino acids 109-128 of Mouse Myelin PLP  Run BLAST with  Run BLAST with
特記事項	<p>The Life Science industry has been in the grips of a reproducibility crisis for a number of years. Abcam is leading the way in addressing this with our range of recombinant monoclonal antibodies and knockout edited cell lines for gold-standard validation. Please check that this product meets your needs before purchasing.</p> <p>If you have any questions, special requirements or concerns, please send us an inquiry and/or contact our Support team ahead of purchase. Recommended alternatives for this product can be found below, along with publications, customer reviews and Q&As</p>

製品の特性

製品の状態	Liquid
保存方法	Shipped at 4°C. Upon delivery aliquot and store at -20°C. Avoid freeze / thaw cycles.
バッファー	Preservative: 0.05% Sodium azide Constituent: Whole serum
精製度	Whole antiserum
ポリ/モノ	ポリクローナル
アイソタイプ	IgG

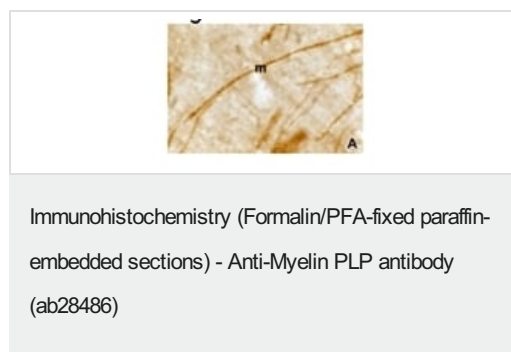
The Abpromise guarantee Abpromise保証は、 次のテスト済みアプリケーションにおけるab28486の使用に適用されます
アプリケーションノートには、推奨の開始希釈率がありますが、適切な希釈率につきましてはご検討ください。

アプリケーション	Abreviews	特記事項
IHC-P	★★★★★ (2)	Use at an assay dependent concentration.

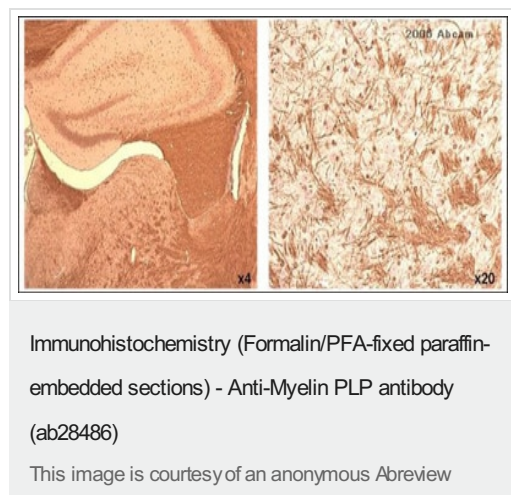
ターゲット情報

機能	This is the major myelin protein from the central nervous system. It plays an important role in the formation or maintenance of the multilamellar structure of myelin.
関連疾患	Defects in PLP1 are the cause of leukodystrophy hypomyelinating type 1 (HLD1) [MIM:312080]; also known as Pelizaeus-Merzbacher disease. HLD1 is an X-linked recessive dysmyelinating disorder of the central nervous system in which myelin is not formed properly. It is characterized clinically by nystagmus, spastic quadriplegia, ataxia, and developmental delay. Defects in PLP1 are the cause of spastic paraplegia X-linked type 2 (SPG2) [MIM:312920]. SPG2 is characterized by spastic gait and hyperreflexia. In some patients, complicating features include nystagmus, dysarthria, sensory disturbance, mental retardation, optic atrophy.
配列類似性	Belongs to the myelin proteolipid protein family.
細胞内局在	Membrane.

画像



Immunohistochemical staining of Myelin PLP in mouse brain thick section using ab28486 (1/1000 dilution). Staining (m) is limited to myelin tracts and oligodendrocytes.



ab28486 at a 1/1000 dilution staining mouse brain (white matter) by IHC-P. The tissue was fixed in 10% formalin saline. Antigen retrieval was via hydrated autoclaving at 121°C for 15 minutes followed by 5 minutes in 98%formic acid. The antibody was incubated with the tissue for 16 hours and then bound antibody was detected using a biotinylated goat anti-rabbit IgG Fc.

Please note: All products are "FOR RESEARCH USE ONLY. NOT FOR USE IN DIAGNOSTIC PROCEDURES"

Our Abpromise to you: Quality guaranteed and expert technical support

- Replacement or refund for products not performing as stated on the datasheet
- Valid for 12 months from date of delivery
- Response to your inquiry within 24 hours

- We provide support in Chinese, English, French, German, Japanese and Spanish
- Extensive multi-media technical resources to help you
- We investigate all quality concerns to ensure our products perform to the highest standards

If the product does not perform as described on this datasheet, we will offer a refund or replacement. For full details of the Abpromise, please visit <https://www.abcam.co.jp/abpromise> or contact our technical team.

Terms and conditions

- Guarantee only valid for products bought direct from Abcam or one of our authorized distributors