




# Anti-MX1 antibody ab222856

画像数 4

### 製品の概要

---

製品名	Anti-MX1 antibody
製品の詳細	Rabbit polyclonal to MX1
由来種	Rabbit
アプリケーション	<b>適用あり:</b> IHC-P, ICC/IF, IP, WB
種交差性	<b>交差種:</b> Mouse, Human <b>交差が予測される動物種:</b> Rhesus monkey, Orangutan 
免疫原	Recombinant fragment corresponding to Human MX1 aa 1-200. Database link: <a href="#">P20591</a>  <a href="#">Run BLAST with</a>  <a href="#">Run BLAST with</a>
ポジティブ・コントロール	WB: A549, NIH/3T3 and HeLa whole cell lysate ( <a href="#">ab150035</a> ). IHC-P: Human pancreatic tissue. ICC/IF: PC-3 cells. IP: HeLa whole cell lysate ( <a href="#">ab150035</a> ).
特記事項	<p>The Life Science industry has been in the grips of a reproducibility crisis for a number of years. Abcam is leading the way in addressing this with our range of recombinant monoclonal antibodies and knockout edited cell lines for gold-standard validation. Please check that this product meets your needs before purchasing.</p> <p>If you have any questions, special requirements or concerns, please send us an inquiry and/or contact our Support team ahead of purchase. Recommended alternatives for this product can be found below, along with publications, customer reviews and Q&amp;As</p>

### 製品の特性

---

製品の状態	Liquid
保存方法	Shipped at 4°C. Store at +4°C short term (1-2 weeks). Upon delivery aliquot. Store at -20°C long term. Avoid freeze / thaw cycle.
バッファー	pH: 7.40 Preservative: 0.03% Proclin 300 Constituents: 50% Glycerol (glycerin, glycerine), PBS
精製度	Protein G purified
特記事項(精製)	Purity >95%.
ポリ/モノ	ポリクローナル
アイソタイプ	IgG

## アプリケーション

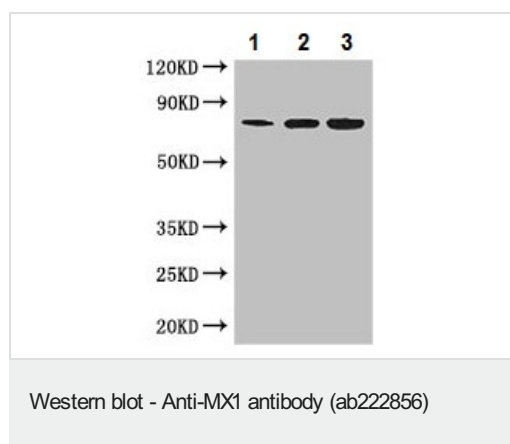
The Abpromise guarantee **Abpromise保証は、次のテスト済みアプリケーションにおけるab222856の使用に適用されます**  
アプリケーションノートには、推奨の開始希釈率がありますが、適切な希釈率につきましてはご検討ください。

アプリケーション	Abreviews	特記事項
IHC-P		1/20 - 1/200.
ICC/IF		1/50 - 1/200.
IP		1/200 - 1/2000.
WB		1/1000 - 1/5000. Detects a band of approximately 76 kDa (predicted molecular weight: 76 kDa).

## ターゲット情報

機能	May regulate the calcium channel activity of TRPCs. Shows activity against influenza virus and VSV, a rhabdovirus.
配列類似性	Belongs to the dynamin family. Contains 1 GED domain.
細胞内局在	Cytoplasm.

## 画像



**All lanes :** Anti-MX1 antibody (ab222856) at 1/1000 dilution

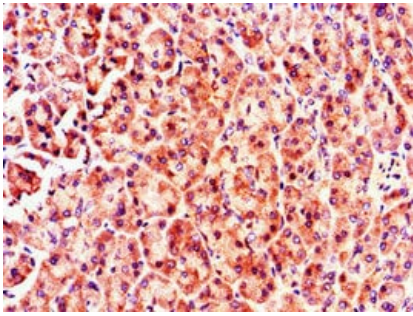
**Lane 1 :** A549 (human lung carcinoma cell line) whole cell lysate

**Lane 2 :** NIH/3T3 (mouse embryo fibroblast cell line) whole cell lysate

**Lane 3 :** HeLa (human epithelial cell line from cervix adenocarcinoma) whole cell lysate

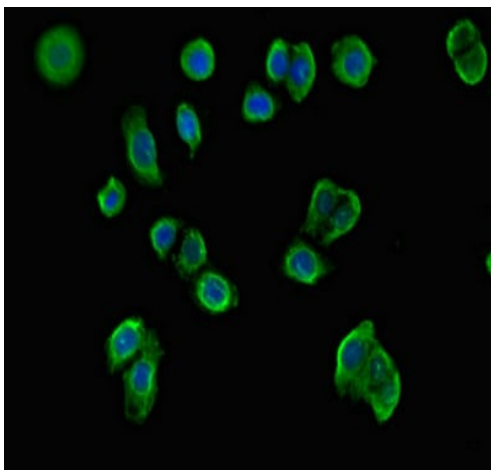
**Predicted band size:** 76 kDa

**Observed band size:** 76 kDa



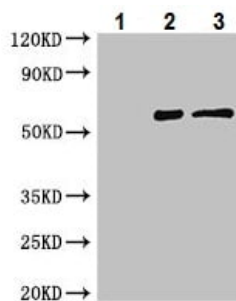
Immunohistochemistry (Formalin/PFA-fixed paraffin-embedded sections) - Anti-MX1 antibody (ab222856)

Paraffin-embedded human pancreatic tissue stained for MX1 using ab222856 at 1/100 dilution in immunohistochemical analysis.



Immunocytochemistry/ Immunofluorescence - Anti-MX1 antibody (ab222856)

PC-3 (human prostate adenocarcinoma cell line) cells stained for MX1 (green) using ab222856 at 1/100 dilution in ICC/IF, followed by Alexa Fluor 488-conjugated Goat Anti-Rabbit IgG (H+L).



Immunoprecipitation - Anti-MX1 antibody (ab222856)

MX1 was immunoprecipitated from 500  $\mu$ g HeLa (human epithelial cell line from cervix adenocarcinoma) whole cell lysate with 4  $\mu$ g ab222856. Western blot was performed from the immunoprecipitate using ab222856.

Lane 1: Control IgG IP in HeLa whole cell lysate.

Lane 2: ab222856 IP in HeLa whole cell lysate.

Lane 3: HeLa whole cell lysate (20  $\mu$ g).

For western blotting, an HRP-conjugated light chain specific antibody was used as the secondary antibody at 1/50000 dilution.

## **Our Abpromise to you: Quality guaranteed and expert technical support**

---

- Replacement or refund for products not performing as stated on the datasheet
- Valid for 12 months from date of delivery
- Response to your inquiry within 24 hours
  
- We provide support in Chinese, English, French, German, Japanese and Spanish
- Extensive multi-media technical resources to help you
- We investigate all quality concerns to ensure our products perform to the highest standards

If the product does not perform as described on this datasheet, we will offer a refund or replacement. For full details of the Abpromise, please visit <https://www.abcam.co.jp/abpromise> or contact our technical team.

## **Terms and conditions**

---

- Guarantee only valid for products bought direct from Abcam or one of our authorized distributors