

Anti-MTR4 antibody ab70551

★★★★★ [3 Abreviews](#) [11 References](#) [画像数 4](#)

製品の概要

製品名	Anti-MTR4 antibody
製品の詳細	Rabbit polyclonal to MTR4
由来種	Rabbit
アプリケーション	適用あり: IP, IHC-P, ICC, WB
種交差性	交差種: Mouse, Human
免疫原	Synthetic peptide corresponding to Human MTR4. Database link: NP_056175.2

特記事項

The Life Science industry has been in the grips of a reproducibility crisis for a number of years. Abcam is leading the way in addressing this with our range of recombinant monoclonal antibodies and knockout edited cell lines for gold-standard validation. Please check that this product meets your needs before purchasing.

If you have any questions, special requirements or concerns, please send us an inquiry and/or contact our Support team ahead of purchase. Recommended alternatives for this product can be found below, along with publications, customer reviews and Q&As

製品の特性

製品の状態	Liquid
保存方法	Shipped at 4°C. Upon delivery aliquot and store at -20°C. Avoid freeze / thaw cycles.
バッファー	pH: 6.8 Preservative: 0.09% Sodium azide Constituents: 0.1% BSA, Tris buffered saline
精製度	Immunogen affinity purified
ポリ/モノ	ポリクローナル
アイソタイプ	IgG

アプリケーション

The Abpromise guarantee [Abpromise保証は、次のテスト済みアプリケーションにおけるab70551の使用に適用されます](#)
アプリケーションノートには、推奨の開始希釈率がありますが、適切な希釈率につきましてはご検討ください。

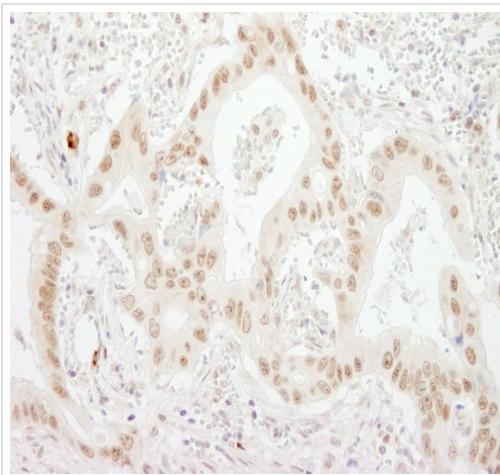
アプリケーション	Abreviews	特記事項
IP		Use at an assay dependent concentration.
IHC-P		Use a concentration of 5 µg/ml. Perform heat mediated antigen retrieval with citrate buffer pH 6 before commencing with IHC staining protocol.
ICC		Use at an assay dependent concentration. Epitope retrieval with Tris-EDTA pH9.0 is recommended for formalin-fixed paraffin-embedded cells.
WB	★★★★★ (3)	1/2000 - 1/10000. Detects a band of approximately 118 kDa (predicted molecular weight: 118 kDa).

ターゲット情報

関連性 MTR4, or superkiller viralicidic activity 2 like 2, may be involved in pre-mRNA splicing. MTR4 is an exosome-associated protein and may be involved in the recruitment of the exosome to pre-rRNA, to mediate the 3' end processing of 5.8S rRNA.

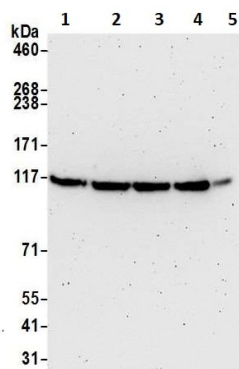
細胞内局在 Nucleus, nucleolus.

画像



Immunohistochemistry (Formalin/PFA-fixed paraffin-embedded sections) analysis of human lung carcinoma tissue labelling MTR4 with ab70551 at 1/200 (1 µg/ml). Detection: DAB.

Immunohistochemistry (Formalin/PFA-fixed paraffin-embedded sections) - Anti-MTR4 antibody (ab70551)



Western blot - Anti-MTR4 antibody (ab70551)

All lanes : Anti-MTR4 antibody (ab70551) at 0.1 µg/ml

Lane 1 : HeLa (human epithelial cell line from cervix adenocarcinoma) whole cell lysate

Lane 2 : HEK-293T (human epithelial cell line from embryonic kidney transformed with large T antigen) whole cell lysate

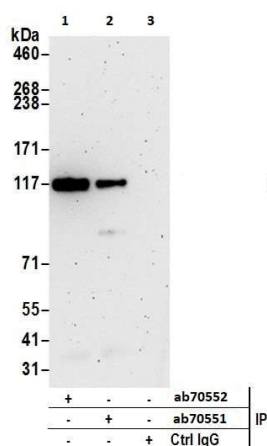
Lane 3 : Jurkat (human T cell leukemia cell line from peripheral blood) whole cell lysate

Lane 4 : TCMK-1 (mouse kidney epithelial cell line) whole cell lysate

Lane 5 : NIH/3T3 (mouse embryo fibroblast cell line) whole cell lysate

Predicted band size: 118 kDa

Detection: Chemiluminescence with an exposure time of 3 minutes.



Immunoprecipitation - Anti-MTR4 antibody (ab70551)

Detection of human MTR4 by western blot of immunoprecipitates.

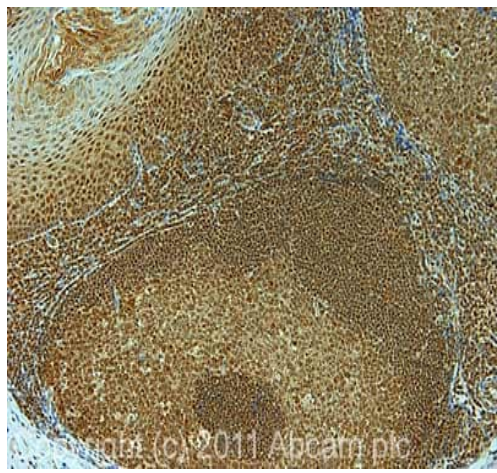
Samples: Whole cell lysate (1.0 mg per IP reaction; 20% of IP loaded) from HeLa cells prepared using NETN lysis buffer.

Antibodies: Affinity purified rabbit anti-MTR4 antibody ab70551 used for IP at 3 µg per reaction. MTR4 was also

immunoprecipitated by rabbit anti-MTR4 antibody **ab70552**. For

blotting immunoprecipitated MTR4, ab70551 was used at 1 µg/ml.

Detection: Chemiluminescence with an exposure time of 3 minutes.



Immunohistochemistry (Formalin/PFA-fixed paraffin-embedded sections) - Anti-MTR4 antibody (ab70551)

IHC image of ab70551 staining in human normal tonsil formalin fixed paraffin embedded tissue section, performed on a Leica Bond™ system using the standard protocol F. The section was pre-treated using heat mediated antigen retrieval with sodium citrate buffer (pH6, epitope retrieval solution 1) for 20 mins. The section was then incubated with ab70551, 5µg/ml, for 15 mins at room temperature and detected using an HRP conjugated compact polymer system. DAB was used as the chromogen. The section was then counterstained with haematoxylin and mounted with DPX.

For other IHC staining systems (automated and non-automated) customers should optimize variable parameters such as antigen retrieval conditions, primary antibody concentration and antibody incubation times.

Please note: All products are "FOR RESEARCH USE ONLY. NOT FOR USE IN DIAGNOSTIC PROCEDURES"

Our Abpromise to you: Quality guaranteed and expert technical support

- Replacement or refund for products not performing as stated on the datasheet
- Valid for 12 months from date of delivery
- Response to your inquiry within 24 hours
- We provide support in Chinese, English, French, German, Japanese and Spanish
- Extensive multi-media technical resources to help you
- We investigate all quality concerns to ensure our products perform to the highest standards

If the product does not perform as described on this datasheet, we will offer a refund or replacement. For full details of the Abpromise, please visit <https://www.abcam.co.jp/abpromise> or contact our technical team.

Terms and conditions

- Guarantee only valid for products bought direct from Abcam or one of our authorized distributors