

# Anti-MTAP antibody [EPR6892] ab126623

リコンビナント RabMAb

[1 Abreviews](#) [1 References](#) [画像数 2](#)

### 製品の概要

製品名	Anti-MTAP antibody [EPR6892]
製品の詳細	Rabbit monoclonal [EPR6892] to MTAP
由来種	Rabbit
アプリケーション	<b>適用あり:</b> WB <b>適用なし:</b> Flow Cyt, ICC/IF or IHC-P
種交差性	<b>交差種:</b> Mouse, Rat, Human
免疫原	Synthetic peptide. This information is proprietary to Abcam and/or its suppliers.
ポジティブ・コントロール	WB: HeLa whole cell lysate, human heart lysate, NIH/3T3 whole cell lysate, mouse heart lysate, rat c6 whole cell lysate, rat heart lysate
特記事項	This product is a recombinant monoclonal antibody, which offers several advantages including: <ul style="list-style-type: none"><li>- High batch-to-batch consistency and reproducibility</li><li>- Improved sensitivity and specificity</li><li>- Long-term security of supply</li><li>- Animal-free production</li></ul> For more information <a href="#">see here</a> . Our RabMAb <sup>®</sup> technology is a patented hybridoma-based technology for making rabbit monoclonal antibodies. For details on our patents, please refer to <a href="#">RabMAb<sup>®</sup> patents</a> .

### 製品の特性

製品の状態	Liquid
保存方法	Shipped at 4°C. Store at -20°C. Stable for 12 months at -20°C.
バッファー	pH: 7.20 Preservative: 0.01% Sodium azide Constituents: 59% PBS, 40% Glycerol (glycerin, glycerine), 0.05% BSA
精製度	Protein A purified
ポリ/モノ	モノクローナル
クローン名	EPR6892
アイソタイプ	IgG

## アプリケーション

**The Abpromise guarantee** Abpromise保証は、次のテスト済みアプリケーションにおけるab126623の使用に適用されます  
アプリケーションノートには、推奨の開始希釈率がありますが、適切な希釈率につきましてはご検討ください。

アプリケーション	Abreviews	特記事項
WB		1/1000 - 1/10000. Detects a band of approximately 29 kDa (predicted molecular weight: 31 kDa).

**追加情報** Is unsuitable for Flow Cyt, ICC/IF or IHC-P.

## ターゲット情報

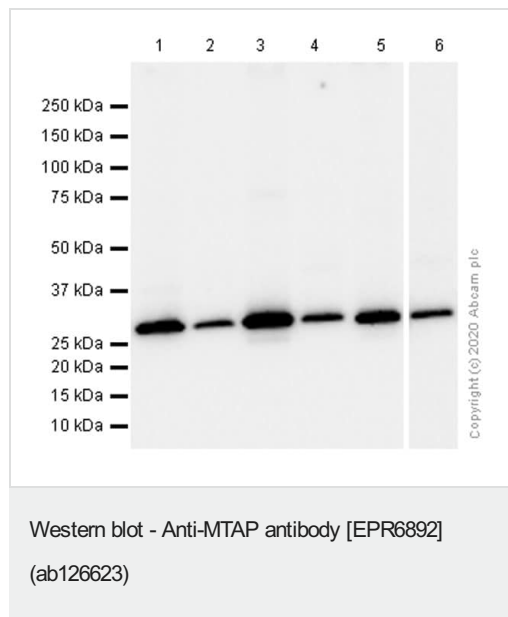
**機能** Plays a major role in polyamine metabolism and is important for the salvage of both adenine and methionine.

**組織特異性** Ubiquitously expressed.

**配列類似性** Belongs to the PNP/MTAP phosphorylase family.

**細胞内局在** Cytoplasm.

## 画像



**Lanes 1 & 3** : Anti-MTAP antibody [EPR6892] (ab126623) at 1/1000 dilution (Purified)

**Lanes 2 & 4-6** : Anti-MTAP antibody [EPR6892] (ab126623) at 1/1000 dilution

**Lane 1** : HeLa (Human cervix adenocarcinoma epithelial cell) whole cell lysate

**Lane 2** : Human heart lysate

**Lane 3** : NIH/3T3 (Mouse embryonic fibroblast) whole cell lysate

**Lane 4** : Mouse heart lysate

**Lane 5** : C6 (Rat glial tumor glial cell) whole cell lysate

**Lane 6** : Rat heart lysate

Lysates/proteins at 20 µg per lane.

### Secondary

**All lanes** : Goat Anti-Rabbit IgG (HRP) with minimal cross-reactivity with human IgG at 1/2000 dilution

**Predicted band size:** 31 kDa

### Why choose a recombinant antibody?



**Research with confidence**  
Consistent and reproducible results



**Long-term and scalable supply**  
Recombinant technology



**Success from the first experiment**  
Confirmed specificity



**Ethical standards compliant**  
Animal-free production

Anti-MTAP antibody [EPR6892] (ab126623)

**Please note:** All products are "FOR RESEARCH USE ONLY. NOT FOR USE IN DIAGNOSTIC PROCEDURES"

### Our Abpromise to you: Quality guaranteed and expert technical support

---

- Replacement or refund for products not performing as stated on the datasheet
- Valid for 12 months from date of delivery
- Response to your inquiry within 24 hours
- We provide support in Chinese, English, French, German, Japanese and Spanish
- Extensive multi-media technical resources to help you
- We investigate all quality concerns to ensure our products perform to the highest standards

If the product does not perform as described on this datasheet, we will offer a refund or replacement. For full details of the Abpromise, please visit <https://www.abcam.co.jp/abpromise> or contact our technical team.

### Terms and conditions

---

- Guarantee only valid for products bought direct from Abcam or one of our authorized distributors