

# Anti-MT-ND1 antibody [EPR13466(2)] - BSA and Azide free ab232594

リコンビナント **RabMAb**

画像数 2

### 製品の概要

製品名	Anti-MT-ND1 antibody [EPR13466(2)] - BSA and Azide free
製品の詳細	Rabbit monoclonal [EPR13466(2)] to MT-ND1 - BSA and Azide free
由来種	Rabbit
特異性	This antibody is unsuitable for detecting cell line samples.
アプリケーション	<b>適用あり:</b> WB
種交差性	<b>交差種:</b> Mouse, Rat, Human
免疫原	Synthetic peptide. This information is proprietary to Abcam and/or its suppliers.
ポジティブ・コントロール	WB: Human, mouse and rat heart lysates.
特記事項	<p>ab232594 is the carrier-free version of <a href="#">ab181848</a>.</p> <p>Our <b>carrier-free</b> antibodies are typically supplied in a PBS-only formulation, purified and free of BSA, sodium azide and glycerol. The carrier-free buffer and high concentration allow for increased conjugation efficiency.</p> <p>This conjugation-ready format is designed for use with fluorochromes, metal isotopes, oligonucleotides, and enzymes, which makes them ideal for antibody labelling, functional and cell-based assays, flow-based assays (e.g. mass cytometry) and Multiplex Imaging applications.</p> <p>Use our <b>conjugation kits</b> for antibody conjugates that are ready-to-use in as little as 20 minutes with &lt;1 minute hands-on-time and 100% antibody recovery: available for fluorescent dyes, HRP, biotin and gold.</p> <p>This product is compatible with the Maxpar<sup>®</sup> Antibody Labeling Kit from Fluidigm, without the need for antibody preparation. Maxpar<sup>®</sup> is a trademark of Fluidigm Canada Inc.</p> <p>This product is a recombinant monoclonal antibody, which offers several advantages including:</p> <ul style="list-style-type: none"> <li>- High batch-to-batch consistency and reproducibility</li> <li>- Improved sensitivity and specificity</li> <li>- Long-term security of supply</li> <li>- Animal-free production</li> </ul> <p>For more information <a href="#">see here</a>.</p> <p>Our RabMAb<sup>®</sup> technology is a patented hybridoma-based technology for making rabbit monoclonal antibodies. For details on our patents, please refer to <a href="#">RabMAb<sup>®</sup> patents</a>.</p>

## 製品の特性

製品の状態	Liquid
保存方法	Shipped at 4°C. Store at +4°C. Do Not Freeze.
バッファー	pH: 7.2 Constituent: PBS
キャリア・フリー	はい
精製度	Protein A purified
ポリ/モノ	モノクローナル
クローン名	EPR13466(2)
アイソタイプ	IgG

## アプリケーション

**The Abpromise guarantee**      **Abpromise保証は、次のテスト済みアプリケーションにおけるab232594の使用に適用されます**  
アプリケーションノートには、推奨の開始希釈率がありますが、適切な希釈率につきましてはご確認ください。

アプリケーション	Abreviews	特記事項
WB		Use at an assay dependent concentration. Detects a band of approximately 36 kDa (predicted molecular weight: 36 kDa). This antibody is unsuitable for detecting cell line samples.

## ターゲット情報

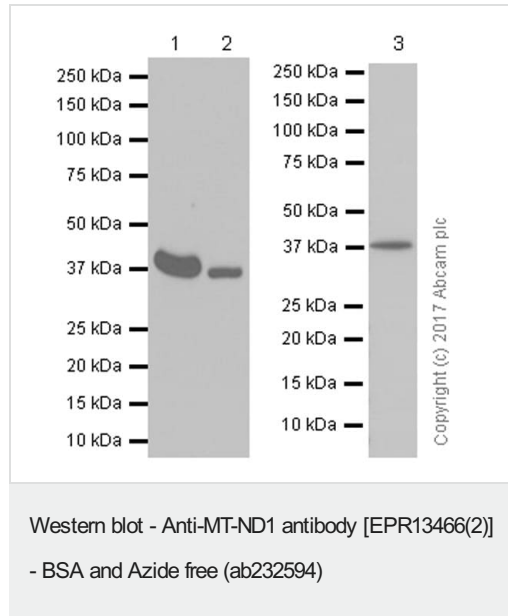
機能	Core subunit of the mitochondrial membrane respiratory chain NADH dehydrogenase (Complex I) that is believed to belong to the minimal assembly required for catalysis. Complex I functions in the transfer of electrons from NADH to the respiratory chain. The immediate electron acceptor for the enzyme is believed to be ubiquinone.
関連疾患	<p>Defects in MT-ND1 are a cause of Leber hereditary optic neuropathy (LHON) [MIM:535000]. LHON is a maternally inherited disease resulting in acute or subacute loss of central vision, due to optic nerve dysfunction. Cardiac conduction defects and neurological defects have also been described in some patients. LHON results from primary mitochondrial DNA mutations affecting the respiratory chain complexes.</p> <p>Defects in MT-ND1 are a cause of mitochondrial encephalomyopathy with lactic acidosis and stroke-like episodes syndrome (MELAS) [MIM:540000]. MELAS is a genetically heterogenous disorder, characterized by episodic vomiting, seizures, and recurrent cerebral insults resembling strokes and causing hemiparesis, hemianopsia, or cortical blindness.</p> <p>Defects in MT-ND1 may be associated with susceptibility to Alzheimer disease mitochondrial (AD-MT) [MIM:502500]. Alzheimer disease is a neurodegenerative disorder characterized by progressive dementia, loss of cognitive abilities, and deposition of fibrillar amyloid proteins as intraneuronal neurofibrillary tangles, extracellular amyloid plaques and vascular amyloid deposits. The major constituent of these plaques is the neurotoxic amyloid-beta-APP 40-42 peptide (s), derived proteolytically from the transmembrane precursor protein APP by sequential secretase processing. The cytotoxic C-terminal fragments (CTFs) and the caspase-cleaved products such</p>

as C31 derived from APP, are also implicated in neuronal death.  
 Defects in MT-ND1 may be associated with non-insulin-dependent diabetes mellitus (NIDDM).  
 Belongs to the complex I subunit 1 family.  
 Mitochondrion inner membrane.

配列類似性

細胞内局在

## 画像



**All lanes :** Anti-MT-ND1 antibody [EPR13466(2)] ([ab181848](#)) at 1/5000 dilution

**Lane 1 :** Human heart lysates

**Lane 2 :** Mouse heart lysates

**Lane 3 :** Rat heart lysates

Lysates/proteins at 15 µg per lane.

### Secondary

**All lanes :** Goat Anti-Rabbit IgG H&L (HRP) ([ab97051](#)) at 1/20000 dilution

**Predicted band size:** 36 kDa

Blocking and diluting buffer: 5% NFDM/TBST

This data was developed using the same antibody clone in a different buffer formulation containing PBS, BSA, glycerol, and sodium azide ([ab181848](#)).

Why choose a recombinant antibody?

**Research with confidence**  
Consistent and reproducible results

**Long-term and scalable supply**  
Recombinant technology

**Success from the first experiment**  
Confirmed specificity

**Ethical standards compliant**  
Animal-free production

Anti-MT-ND1 antibody [EPR13466(2)] - BSA and Azide free (ab232594)

**Please note:** All products are "FOR RESEARCH USE ONLY. NOT FOR USE IN DIAGNOSTIC PROCEDURES"

### **Our Abpromise to you: Quality guaranteed and expert technical support**

---

- Replacement or refund for products not performing as stated on the datasheet
- Valid for 12 months from date of delivery
- Response to your inquiry within 24 hours
- We provide support in Chinese, English, French, German, Japanese and Spanish
- Extensive multi-media technical resources to help you
- We investigate all quality concerns to ensure our products perform to the highest standards

If the product does not perform as described on this datasheet, we will offer a refund or replacement. For full details of the Abpromise, please visit <https://www.abcam.co.jp/abpromise> or contact our technical team.

### **Terms and conditions**

---

- Guarantee only valid for products bought direct from Abcam or one of our authorized distributors