



# Anti-MT-ND1 antibody ab233289

**1 References**   [画像数 4](#)

### 製品の概要

製品名	Anti-MT-ND1 antibody
製品の詳細	Rabbit polyclonal to MT-ND1
由来種	Rabbit
アプリケーション	<b>適用あり:</b> IHC-P, WB
種交差性	<b>交差種:</b> Human, Pig
免疫原	Recombinant fragment corresponding to Human MT-ND1 aa 150-300. Two N-terminal tags, His-tag and GST-tag. Expressed in E.coli. Database link: <a href="#">P03886</a>
	<div>  <a href="#">Run BLAST with</a> </div> <div>  <a href="#">Run BLAST with</a> </div>
ポジティブ・コントロール	IHC-P: Human liver tissue. WB: Recombinant human MT-ND1 protein; Pig liver tissue lysate.
特記事項	<p>The Life Science industry has been in the grips of a reproducibility crisis for a number of years. Abcam is leading the way in addressing this with our range of recombinant monoclonal antibodies and knockout edited cell lines for gold-standard validation. Please check that this product meets your needs before purchasing.</p> <p>If you have any questions, special requirements or concerns, please send us an inquiry and/or contact our Support team ahead of purchase. Recommended alternatives for this product can be found below, along with publications, customer reviews and Q&amp;As</p>

### 製品の特性

製品の状態	Liquid
保存方法	Shipped at 4°C. Store at +4°C short term (1-2 weeks). Upon delivery aliquot. Store at -20°C long term. Avoid freeze / thaw cycle.
バッファー	pH: 7.40 Preservative: 0.011% Proclin 300 Constituents: 55.77% Glycerol (glycerin, glycerine), 44.219% PBS
精製度	Protein A purified
特記事項 (精製)	Antigen-specific affinity chromatography followed by Protein A affinity chromatography.
ポリ/モノ	ポリクローナル
アイソタイプ	IgG

## アプリケーション

**The Abpromise guarantee**      **Abpromise保証は、** 次のテスト済みアプリケーションにおけるab233289の使用に適用されます  
アプリケーションノートには、推奨の開始希釈率がありますが、適切な希釈率につきましてはご検討ください。

アプリケーション	Abreviews	特記事項
IHC-P		Use a concentration of 5 - 20 µg/ml.
WB		Use a concentration of 0.2 - 2 µg/ml.

## ターゲット情報

機能	Core subunit of the mitochondrial membrane respiratory chain NADH dehydrogenase (Complex I) that is believed to belong to the minimal assembly required for catalysis. Complex I functions in the transfer of electrons from NADH to the respiratory chain. The immediate electron acceptor for the enzyme is believed to be ubiquinone.
関連疾患	<p>Defects in MT-ND1 are a cause of Leber hereditary optic neuropathy (LHON) [MIM:535000]. LHON is a maternally inherited disease resulting in acute or subacute loss of central vision, due to optic nerve dysfunction. Cardiac conduction defects and neurological defects have also been described in some patients. LHON results from primary mitochondrial DNA mutations affecting the respiratory chain complexes.</p> <p>Defects in MT-ND1 are a cause of mitochondrial encephalomyopathy with lactic acidosis and stroke-like episodes syndrome (MELAS) [MIM:540000]. MELAS is a genetically heterogenous disorder, characterized by episodic vomiting, seizures, and recurrent cerebral insults resembling strokes and causing hemiparesis, hemianopsia, or cortical blindness.</p> <p>Defects in MT-ND1 may be associated with susceptibility to Alzheimer disease mitochondrial (AD-MT) [MIM:502500]. Alzheimer disease is a neurodegenerative disorder characterized by progressive dementia, loss of cognitive abilities, and deposition of fibrillar amyloid proteins as intraneuronal neurofibrillary tangles, extracellular amyloid plaques and vascular amyloid deposits. The major constituent of these plaques is the neurotoxic amyloid-beta-APP 40-42 peptide (s), derived proteolytically from the transmembrane precursor protein APP by sequential secretase processing. The cytotoxic C-terminal fragments (CTFs) and the caspase-cleaved products such as C31 derived from APP, are also implicated in neuronal death.</p> <p>Defects in MT-ND1 may be associated with non-insulin-dependent diabetes mellitus (NIDDM).</p>
配列類似性	Belongs to the complex I subunit 1 family.
細胞内局在	Mitochondrion inner membrane.

## 画像

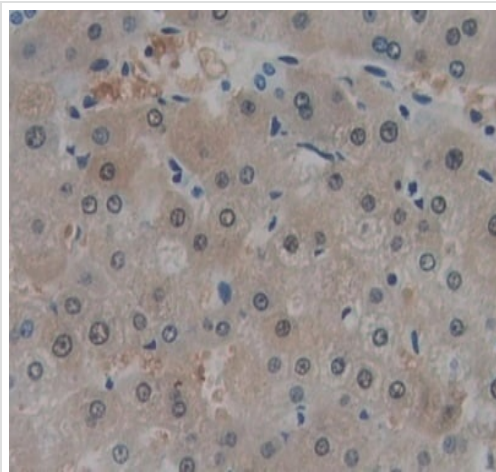


Western blot - Anti-MT-ND1 antibody (ab233289)

Anti-MT-ND1 antibody (ab233289) at 3 µg/ml + Pig liver tissue lysate

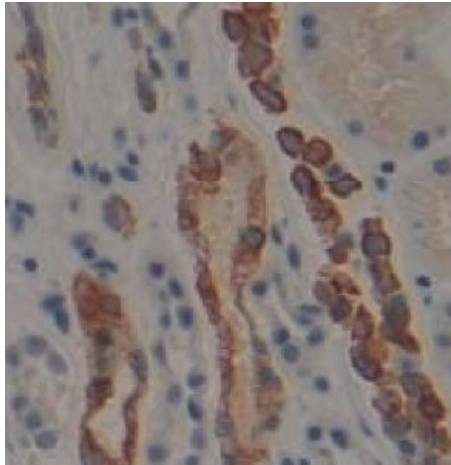
### Secondary

HRP-Linked Goat anti-Rabbit IgG polyclonal at 0.2 µg/ml



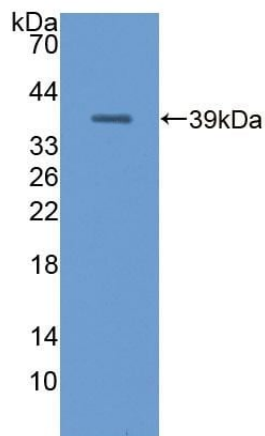
Immunohistochemistry (Formalin/PFA-fixed paraffin-embedded sections) - Anti-MT-ND1 antibody (ab233289)

Formalin-fixed, paraffin-embedded human liver tissue stained for MT-ND1 using ab233289 at 10 µg/mL in immunohistochemical analysis. DAB staining.



Formalin-fixed, paraffin-embedded human kidney tissue stained for MT-ND1 using ab233289 at 20 µg/mL in immunohistochemical analysis. DAB staining.

Immunohistochemistry (Formalin/PFA-fixed paraffin-embedded sections) - Anti-MT-ND1 antibody (ab233289)



Anti-MT-ND1 antibody (ab233289) at 2 µg/ml + Recombinant human MT-ND1 protein

Western blot - Anti-MT-ND1 antibody (ab233289)

**Please note:** All products are "FOR RESEARCH USE ONLY. NOT FOR USE IN DIAGNOSTIC PROCEDURES"

#### Our Abpromise to you: Quality guaranteed and expert technical support

- Replacement or refund for products not performing as stated on the datasheet
- Valid for 12 months from date of delivery

- Response to your inquiry within 24 hours
- We provide support in Chinese, English, French, German, Japanese and Spanish
- Extensive multi-media technical resources to help you
- We investigate all quality concerns to ensure our products perform to the highest standards

If the product does not perform as described on this datasheet, we will offer a refund or replacement. For full details of the Abpromise, please visit <https://www.abcam.co.jp/abpromise> or contact our technical team.

#### **Terms and conditions**

---

- Guarantee only valid for products bought direct from Abcam or one of our authorized distributors