

Product datasheet

Anti-MS2 antibody ab236949

画像数 4

製品の概要

製品名	Anti-MS2 antibody
製品の詳細	Rabbit polyclonal to MS2
由来種	Rabbit
アプリケーション	適用あり: IHC-P, WB, ICC/IF
種交差性	交差種: Mouse, Human
免疫原	Recombinant fragment corresponding to Human MS2 aa 650-850. Database link: P78325 Run BLAST with Run BLAST with
ポジティブ・コントロール	WB: Raji, THP-1 and Raw 264.7 whole cell lysates. IHC-P: Human lymph node and pancreas tissues. ICC/IF: MCF7 cells.
特記事項	<p>The Life Science industry has been in the grips of a reproducibility crisis for a number of years. Abcam is leading the way in addressing this with our range of recombinant monoclonal antibodies and knockout edited cell lines for gold-standard validation. Please check that this product meets your needs before purchasing.</p> <p>If you have any questions, special requirements or concerns, please send us an inquiry and/or contact our Support team ahead of purchase. Recommended alternatives for this product can be found below, along with publications, customer reviews and Q&As</p>

製品の特性

製品の状態	Liquid
保存方法	Shipped at 4°C. Store at +4°C short term (1-2 weeks). Upon delivery aliquot. Store at -20°C long term. Avoid freeze / thaw cycle.
バッファー	pH: 7.40 Preservative: 0.03% Proclin 300 Constituents: PBS, 50% Glycerol (glycerin, glycerine)
精製度	Protein G purified
特記事項(精製)	Purity >95%.
ポリ/モノ	ポリクローナル
アイソタイプ	IgG

アプリケーション

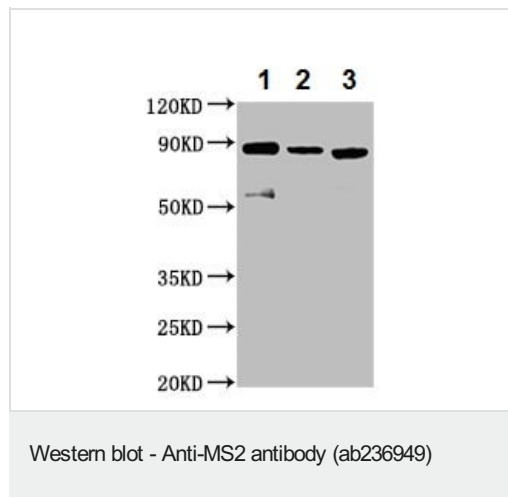
The Abpromise guarantee **Abpromise保証は、** 次のテスト済みアプリケーションにおけるab236949の使用に適用されます
アプリケーションノートには、推奨の開始希釈率がありますが、適切な希釈率につきましてはご検討ください。

アプリケーション	Abreviews	特記事項
IHC-P		1/200 - 1/500.
WB		1/500 - 1/5000. Predicted molecular weight: 89 kDa.
ICC/IF		1/50 - 1/200.

ターゲット情報

機能	Possible involvement in extravasation of leukocytes.
組織特異性	Expressed on neutrophils and monocytes.
配列類似性	Contains 1 disintegrin domain. Contains 1 EGF-like domain. Contains 1 peptidase M12B domain.
細胞内局在	Membrane.

画像



All lanes : Anti-MS2 antibody (ab236949) at 1/500 dilution

Lane 1 : Raji (human Burkitt's lymphoma cell line) whole cell lysate

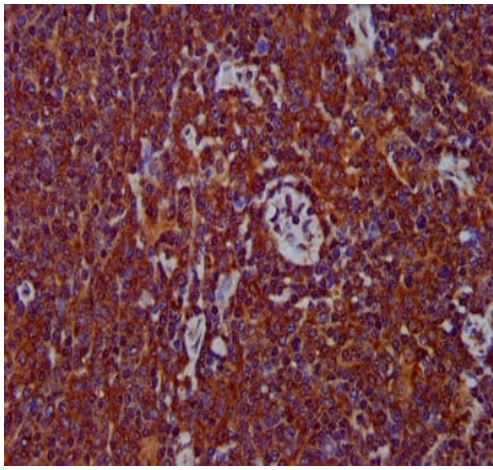
Lane 2 : THP-1 (human monocytic leukemia cell line) whole cell lysate

Lane 3 : RAW 264.7 (mouse macrophage cell line transformed with Abelson murine leukemia virus) whole cell lysate

Secondary

All lanes : Goat polyclonal to rabbit IgG at 1/50000 dilution

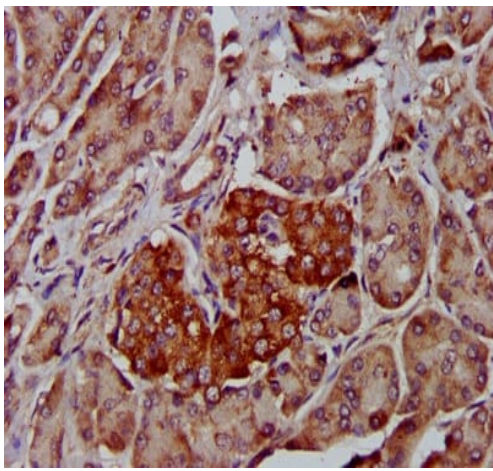
Predicted band size: 89 kDa



Immunohistochemistry (Formalin/PFA-fixed paraffin-embedded sections) - Anti-MS2 antibody (ab236949)

Paraffin-embedded human lymph node tissue stained for MS2 using ab236949 at 1/400 dilution in immunohistochemical analysis.

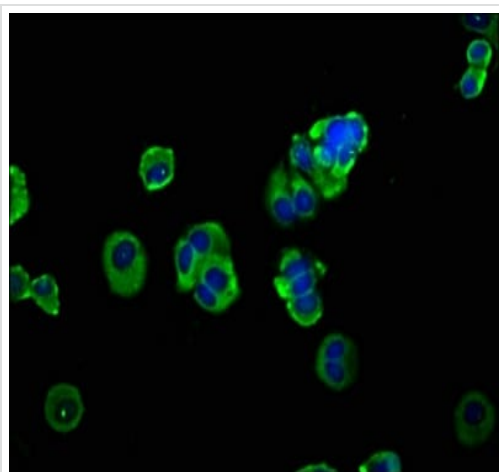
After dewaxing and hydration, antigen retrieval was mediated by high pressure in a citrate buffer (pH 6.0). Section was blocked with 10% normal goat serum 30min at RT. Then primary antibody (1% BSA) was incubated at 4°C overnight. The primary is detected by a biotinylated secondary antibody and visualized using an HRP conjugated SP system.



Immunohistochemistry (Formalin/PFA-fixed paraffin-embedded sections) - Anti-MS2 antibody (ab236949)

Paraffin-embedded human pancreas tissue stained for MS2 using ab236949 at 1/400 dilution in immunohistochemical analysis.

After dewaxing and hydration, antigen retrieval was mediated by high pressure in a citrate buffer (pH 6.0). Section was blocked with 10% normal goat serum 30min at RT. Then primary antibody (1% BSA) was incubated at 4°C overnight. The primary is detected by a biotinylated secondary antibody and visualized using an HRP conjugated SP system.



Immunocytochemistry/ Immunofluorescence - Anti-MS2 antibody (ab236949)

MCF7 (human breast adenocarcinoma cell line) cells stained for MS2 (green) using ab236949 at 1/133 dilution in ICC/IF.

The cells were fixed in 4% formaldehyde, permeabilized using 0.2% Triton X-100 and blocked in 10% normal Goat Serum. The cells were then incubated with the antibody overnight at 4°C. The secondary antibody was Alexa Fluor 488-conjugated Goat Anti-Rabbit IgG (H+L). Counterstained with DAPI (Blue).

Please note: All products are "FOR RESEARCH USE ONLY. NOT FOR USE IN DIAGNOSTIC PROCEDURES"

Our Abpromise to you: Quality guaranteed and expert technical support

- Replacement or refund for products not performing as stated on the datasheet
- Valid for 12 months from date of delivery
- Response to your inquiry within 24 hours
- We provide support in Chinese, English, French, German, Japanese and Spanish
- Extensive multi-media technical resources to help you
- We investigate all quality concerns to ensure our products perform to the highest standards

If the product does not perform as described on this datasheet, we will offer a refund or replacement. For full details of the Abpromise, please visit <https://www.abcam.co.jp/abpromise> or contact our technical team.

Terms and conditions

- Guarantee only valid for products bought direct from Abcam or one of our authorized distributors