

Anti-MRP2 antibody [EPR10997(2)] ab187644

KO 評価済 リコンビナント RabMAb

[3 Abreviews](#) [2 References](#) [画像数 4](#)

製品の概要

製品名	Anti-MRP2 antibody [EPR10997(2)]
製品の詳細	Rabbit monoclonal [EPR10997(2)] to MRP2
由来種	Rabbit
アプリケーション	適用あり: WB, IHC-P
種交差性	交差種: Human
免疫原	Synthetic peptide. This information is proprietary to Abcam and/or its suppliers. (Peptide available as ab112272)
ポジティブ・コントロール	Human Liver tissue; Human fetal liver lysate; HepG2 and A549 cell lysates.
特記事項	This product is a recombinant monoclonal antibody, which offers several advantages including: <ul style="list-style-type: none"> - High batch-to-batch consistency and reproducibility - Improved sensitivity and specificity - Long-term security of supply - Animal-free production For more information see here . Our RabMAb [®] technology is a patented hybridoma-based technology for making rabbit monoclonal antibodies. For details on our patents, please refer to RabMAb[®] patents .

製品の特性

製品の状態	Liquid
保存方法	Shipped at 4°C. Store at +4°C short term (1-2 weeks). Upon delivery aliquot. Store at -20°C long term. Avoid freeze / thaw cycle.
バッファー	pH: 7.2 Preservative: 0.01% Sodium azide Constituents: 59% PBS, 40% Glycerol (glycerin, glycerine), 0.05% BSA
精製度	Protein A purified
ポリ/モノ	モノクローナル
クローン名	EPR10997(2)
アイソタイプ	IgG

アプリケーション

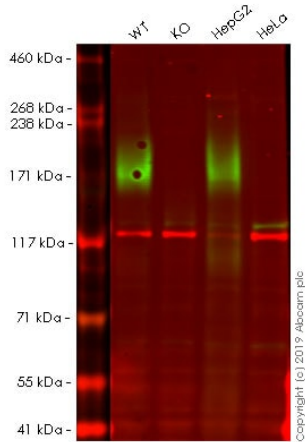
The Abpromise guarantee **Abpromise保証は、**次のテスト済みアプリケーションにおけるab187644の使用に適用されます
アプリケーションノートには、推奨の開始希釈率がありますが、適切な希釈率につきましてはご検討ください。

アプリケーション	Abreviews	特記事項
WB		1/1000. Predicted molecular weight: 174 kDa.Can be blocked with Recombinant Human MRP2 protein (ab112272) .
IHC-P		1/500 - 1/1000. Perform heat mediated antigen retrieval with Tris/EDTA buffer pH 9.0 before commencing with IHC staining protocol.

ターゲット情報

機能	Mediates hepatobiliary excretion of numerous organic anions. May function as a cellular cisplatin transporter.
組織特異性	Found on the apical membrane of polarized cells in liver, kidney and intestine. The highest expression is found in liver.
関連疾患	Defects in ABCC2 are the cause of Dubin-Johnson syndrome (DJS) [MIM:237500]. DJS is an autosomal recessive disorder characterized by conjugated hyperbilirubinemia, an increase in the urinary excretion of coproporphyrin isomer I, deposition of melanin-like pigment in hepatocytes, and prolonged retention of sulfobromophthalein, but otherwise normal liver function.
配列類似性	Belongs to the ABC transporter superfamily. ABCC family. Conjugate transporter (TC 3.A.1.208) subfamily. Contains 2 ABC transmembrane type-1 domains. Contains 2 ABC transporter domains.
細胞内局在	Membrane.

画像



Western blot - Anti-MRP2 antibody [EPR10997(2)]
(ab187644)

All lanes : Anti-MRP2 antibody [EPR10997(2)] (ab187644) at 1/1000 dilution

Lane 1 : Wild-type A549 (Human lung carcinoma cell line) whole cell lysate

Lane 2 : ABCC2 knockout A549 (Human lung carcinoma cell line) whole cell lysate

Lane 3 : Hep G2 (Human liver hepatocellular carcinoma cell line) whole cell lysate

Lane 4 : HeLa (Human epithelial cell line from cervix adenocarcinoma) whole cell lysate

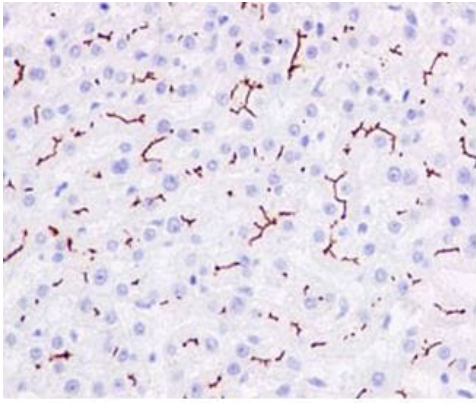
Lysates/proteins at 20 µg per lane.

Performed under reducing conditions.

Predicted band size: 174 kDa

Lanes 1 -4: Merged signal (red and green). Green - ab187644 observed at 210 kDa. Red - loading control, **ab130007**, observed at 130 kDa.

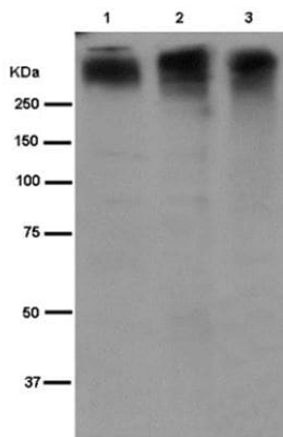
ab187644 was shown to recognize MRP2 in wild-type A549 cells as signal was lost at the expected MW in ABCC2 knockout cells. Additional cross-reactive bands were observed in the wild-type and knockout cells. Wild-type and ABCC2 knockout samples were subjected to SDS-PAGE. The membrane was blocked with 3% Milk. Ab187644 and **ab130007** (Mouse anti-Vinculin loading control) were incubated overnight at 4°C at 1/1000 dilution and 1/1000 dilution respectively. Blots were developed with Goat anti-Rabbit IgG H&L (IRDye® 800CW) preabsorbed **ab216773** and Goat anti-Mouse IgG H&L (IRDye® 680RD) preabsorbed **ab216776** secondary antibodies at 1/20000 dilution for 1 hour at room temperature before imaging.



Immunohistochemistry (Formalin/PFA-fixed paraffin-embedded sections) - Anti-MRP2 antibody [EPR10997(2)] (ab187644)

Immunohistochemistry analysis of paraffin-embedded Human liver tissue labeling MRP2 with ab187644 at 1/1000 dilution. A prediluted HRP polymer for Rabbit IgG used as secondary antibody. Counterstained with Hematoxylin.

Perform heat mediated antigen retrieval with Tris/EDTA buffer pH 9.0 before commencing with IHC staining protocol.



Western blot - Anti-MRP2 antibody [EPR10997(2)] (ab187644)

All lanes : Anti-MRP2 antibody [EPR10997(2)] (ab187644) at 1/1000 dilution

Lane 1 : HepG2 lysate

Lane 2 : A549 lysate

Lane 3 : Human fetal liver lysate

Lysates/proteins at 20 µg per lane.

Secondary

All lanes : Goat Anti-Rabbit IgG, (H+L), Peroxidase conjugated at 1/1000 dilution

Predicted band size: 174 kDa

Why choose a recombinant antibody?



Research with confidence
Consistent and reproducible results



Long-term and scalable supply
Recombinant technology



Success from the first experiment
Confirmed specificity



Ethical standards compliant
Animal-free production

Anti-MRP2 antibody [EPR10997(2)] (ab187644)

Please note: All products are "FOR RESEARCH USE ONLY. NOT FOR USE IN DIAGNOSTIC PROCEDURES"

Our Abpromise to you: Quality guaranteed and expert technical support

- Replacement or refund for products not performing as stated on the datasheet
- Valid for 12 months from date of delivery
- Response to your inquiry within 24 hours
- We provide support in Chinese, English, French, German, Japanese and Spanish
- Extensive multi-media technical resources to help you
- We investigate all quality concerns to ensure our products perform to the highest standards

If the product does not perform as described on this datasheet, we will offer a refund or replacement. For full details of the Abpromise, please visit <https://www.abcam.co.jp/abpromise> or contact our technical team.

Terms and conditions

- Guarantee only valid for products bought direct from Abcam or one of our authorized distributors