

Mouse IgG1, kappa monoclonal [15-6E10A7] - Isotype Control ab170190

25 References **画像数 3**

製品の概要

製品名	Mouse IgG1, kappa monoclonal [15-6E10A7] - Isotype Control
特異性	This Mouse IgG1 Isotype Control Antibody was raised in mouse against a yeast-specific protein making it unsuitable for yeast experiments.
アプリケーション	適用あり: Flow Cyt, ELISA, IHC-P, ICC/IF
免疫原	Recombinant full length protein. ab170190 binds specifically to DNA-binding domain of the yeast GAL4 protein transcription activator.
特記事項	<p>This antibody clone is manufactured by Abcam.</p> <p>Isotype controls are used to confirm that the primary antibody binding is specific and not a result of non-specific Fc receptor binding or other protein interactions. The isotype control antibody should match the primary antibody's host species, isotype, and possible conjugation. The control performed appropriately in all materials and platforms that were tested.</p> <p>Product was previously marketed under the MitoSciences sub-brand.</p> <p>If you require this antibody in a particular buffer formulation or a particular conjugate for your experiments, please contact orders@abcam.com or you can find further information here.</p> <p>The Life Science industry has been in the grips of a reproducibility crisis for a number of years. Abcam is leading the way in addressing this with our range of recombinant monoclonal antibodies and knockout edited cell lines for gold-standard validation. Please check that this product meets your needs before purchasing.</p> <p>If you have any questions, special requirements or concerns, please send us an inquiry and/or contact our Support team ahead of purchase. Recommended alternatives for this product can be found below, along with publications, customer reviews and Q&As</p>

製品の特性

製品の状態	Liquid
保存方法	Shipped at 4°C. Store at +4°C.
バッファー	<p>pH: 7.5</p> <p>Preservative: 0.02% Sodium azide</p> <p>Constituent: HEPES buffered saline</p>

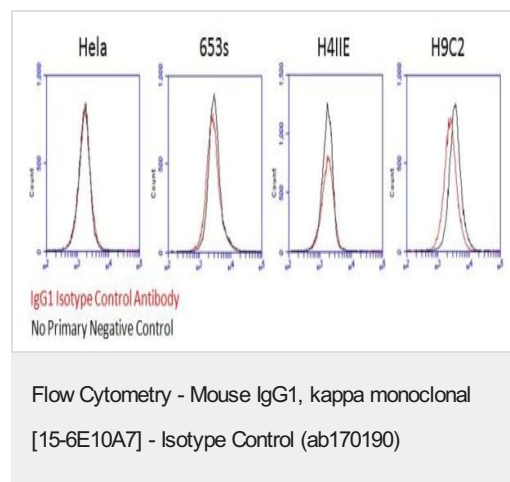
精製度	Ammonium Sulphate Precipitation
ポリ/モノ	モノクローナル
クローン名	15-6E10A7
アイソタイプ	IgG1
軽鎖の種類	kappa

アプリケーション

The Abpromise guarantee Abpromise保証は、次のテスト済みアプリケーションにおけるab170190の使用に適用されます
アプリケーションノートには、推奨の開始希釈率がありますが、適切な希釈率につきましてはご検討ください。

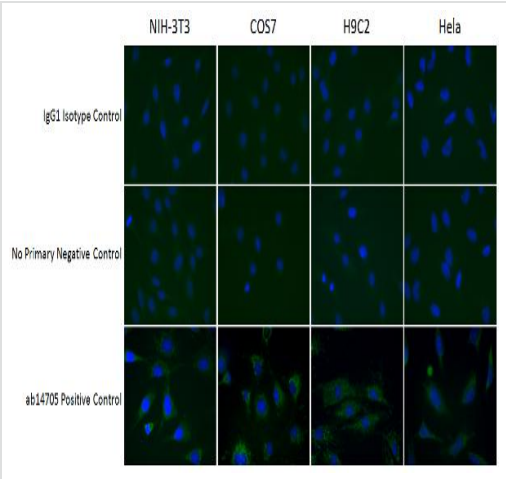
アプリケーション	Abreviews	特記事項
Flow Cyt		Use a concentration of 1 µg/ml.
ELISA		Use at an assay dependent concentration.
IHC-P		Use at an assay dependent concentration. PubMed: 26627833
ICC/IF		Use a concentration of 1 µg/ml.

画像



Flow cytometry experiments with 4% PFA fixed HeLa (Human adenocarcinoma), 653s (mouse myeloma), H4IIE (rat hepatoma) and H9C2 (rat myoblast) were performed with the IgG1 Isotype Control Antibody (red) and no primary antibody negative control (black).

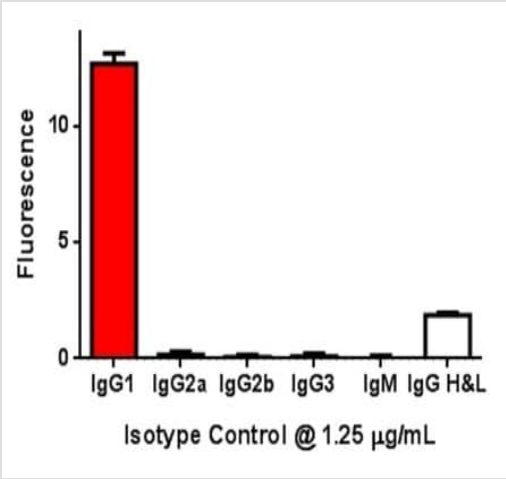
An Alexa Fluor® 488 conjugate with isotype specificity to the mouse antibody was used as a secondary antibody. The isotype control at 1 µg/mL shows no higher signal than the no primary negative control.



Immunocytochemistry/ Immunofluorescence -
 Mouse IgG1, kappa monoclonal [15-6E10A7] -
 Isotype Control (ab170190)

Immunocytochemistry (ICC) experiments with NIH-3T3 (mouse sarcoma), COS7 (monkey kidney fibroblast), H9C2 (rat myoblast) and HeLa (human adenocarcinoma) were performed with the IgG1 Isotype Control Antibody (top), no primary antibody negative control (middle), and **ab14705** as a positive control (bottom).

An Alexa Fluor® 488 conjugate with isotype specificity to the mouse antibody was used as a secondary antibody. The isotype control at 1 ug/mL shows no higher signal than the no primary negative control.



ELISA - Mouse IgG1, kappa monoclonal [15-6E10A7] - Isotype Control (ab170190)

Fluorescence ELISA.

An isotyping ELISA was performed by coating a 96-well plate with 1.25 ug/mL of the IgG1 Isotype Control Antibody and detecting with Alexa Fluor conjugates specific to mouse IgG1, IgG2a, IgG2b, IgG3, IgM and heavy and light chains (H&L) of IgG. This experiment verifies that the primary antibody's isotype is correct and that it is successfully bound by the secondary antibody.

Please note: All products are "FOR RESEARCH USE ONLY. NOT FOR USE IN DIAGNOSTIC PROCEDURES"

Our Abpromise to you: Quality guaranteed and expert technical support

- Replacement or refund for products not performing as stated on the datasheet
- Valid for 12 months from date of delivery
- Response to your inquiry within 24 hours
- We provide support in Chinese, English, French, German, Japanese and Spanish
- Extensive multi-media technical resources to help you
- We investigate all quality concerns to ensure our products perform to the highest standards

If the product does not perform as described on this datasheet, we will offer a refund or replacement. For full details of the Abpromise, please visit <https://www.abcam.co.jp/abpromise> or contact our technical team.

Terms and conditions

- Guarantee only valid for products bought direct from Abcam or one of our authorized distributors