

### Anti-MMP3 antibody ab53015

★★★★★ [7 Abreviews](#) [111 References](#) [画像数 5](#)

#### 製品の概要

製品名	Anti-MMP3 antibody
製品の詳細	Rabbit polyclonal to MMP3
由来種	Rabbit
アプリケーション	<b>適用あり:</b> IHC-P, WB, ICC/IF
種交差性	<b>交差種:</b> Human
免疫原	Synthetic peptide derived from human MMP3 Peptide available as <a href="#">ab134501</a> .
特記事項	<p>The Life Science industry has been in the grips of a reproducibility crisis for a number of years. Abcam is leading the way in addressing this with our range of recombinant monoclonal antibodies and knockout edited cell lines for gold-standard validation. Please check that this product meets your needs before purchasing.</p> <p>If you have any questions, special requirements or concerns, please send us an inquiry and/or contact our Support team ahead of purchase. Recommended alternatives for this product can be found below, along with publications, customer reviews and Q&amp;As</p>

#### 製品の特性

製品の状態	Liquid
保存方法	Shipped at 4°C. Upon delivery aliquot and store at -20°C. Avoid freeze / thaw cycles.
バッファー	pH: 7.40 Preservative: 0.02% Sodium azide Constituents: 50% Glycerol, 0.87% Sodium chloride, PBS
精製度	Immunogen affinity purified
ポリ/モノ	ポリクローナル
アイソタイプ	IgG

#### アプリケーション

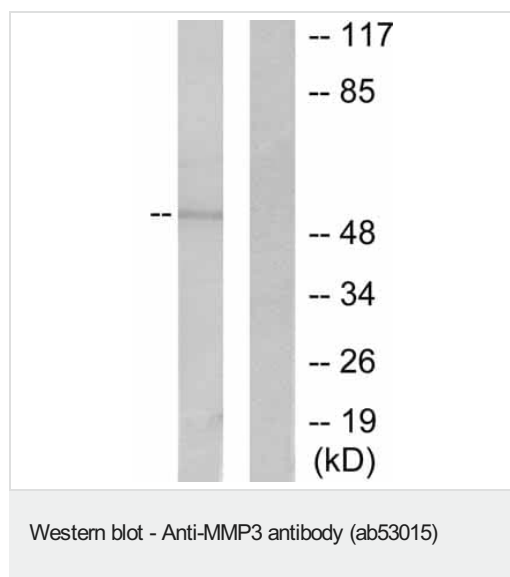
**The Abpromise guarantee** [Abpromise保証は、次のテスト済みアプリケーションにおけるab53015の使用に適用されます](#)  
アプリケーションノートには、推奨の開始希釈率がありますが、適切な希釈率につきましてはご検討ください。

アプリケーション	Abreviews	特記事項
IHC-P	★★★★☆ (3)	1/50 - 1/100.
WB	★★★★☆ (2)	1/500 - 1/1000. Detects a band of approximately 54 kDa (predicted molecular weight: 54 kDa).
ICC/IF	★★★★★ (1)	Use a concentration of 5 µg/ml.

## ターゲット情報

機能	Can degrade fibronectin, laminin, gelatins of type I, III, IV, and V; collagens III, IV, X, and IX, and cartilage proteoglycans. Activates procollagenase.
配列類似性	Belongs to the peptidase M10A family. Contains 4 hemopexin-like domains.
ドメイン	The conserved cysteine present in the cysteine-switch motif binds the catalytic zinc ion, thus inhibiting the enzyme. The dissociation of the cysteine from the zinc ion upon the activation-peptide release activates the enzyme.
細胞内局在	Secreted > extracellular space > extracellular matrix.

## 画像



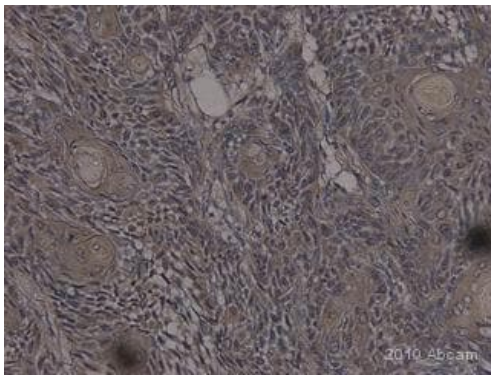
**All lanes** : Anti-MMP3 antibody (ab53015) at 1/500 dilution

**Lane 1** : Extracts from 293 cells, untreated.

**Lane 2** : Extracts from 293 cells, treated with the immunising peptide.

**Predicted band size**: 54 kDa

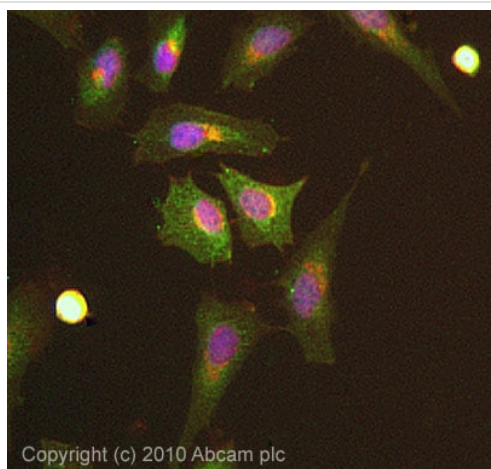
**Observed band size**: 54 kDa



Immunohistochemistry (Formalin/PFA-fixed paraffin-embedded sections) - Anti-MMP3 antibody (ab53015)

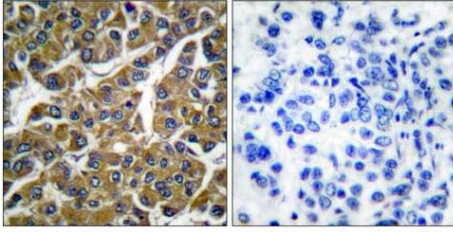
This image is courtesy of an anonymous abreview.

Immunohistochemistry (Formalin/PFA-fixed paraffin-embedded sections) analysis of human lymphoma labeling MMP3 with ab53015 at 1/100 dilution. Tissue was fixed with formaldehyde; heat-mediated antigen retrieval was performed using citrate buffer (pH 6.0). The tissue was blocked with 1% serum for 1 hour at 25°C. A biotin conjugated polyclonal goat anti-rabbit secondary antibody was used at 1/200 dilution.



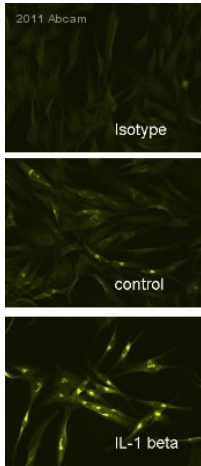
Immunocytochemistry/ Immunofluorescence - Anti-MMP3 antibody (ab53015)

ICC/IF image of ab53015 stained HeLa cells. The cells were 4% formaldehyde fixed (10 min) and then incubated in 1%BSA / 10% normal goat serum / 0.3M glycine in 0.1% PBS-Tween for 1h to permeabilise the cells and block non-specific protein-protein interactions. The cells were then incubated with the antibody (ab53015, 1µg/ml) overnight at +4°C. The secondary antibody (green) was Alexa Fluor® 488 goat anti-rabbit IgG (H+L) used at a 1/1000 dilution for 1h. Alexa Fluor® 594 WGA was used to label plasma membranes (red) at a 1/200 dilution for 1h. DAPI was used to stain the cell nuclei (blue) at a concentration of 1.43µM.



Immunohistochemistry (Formalin/PFA-fixed paraffin-embedded sections) - Anti-MMP3 antibody (ab53015)

Immunohistochemical analysis of paraffin-embedded human breast carcinoma tissue using MMP3 antibody at a dilution of 1/50. Left: without immunizing peptide; Right: with immunizing peptide.



Immunocytochemistry/ Immunofluorescence - Anti-MMP3 antibody (ab53015)

This image is courtesy of an Abreview submitted by Torsten Lowin.

Top image: Isotype control Middle image: Unstimulated cells  
Bottom image: IL-1 beta stimulated cells (24 hours, 10 ng/ml)  
ab53015 staining MMP3 in Human synovial fibroblasts by Immunocytochemistry/ Immunofluorescence. Cells were fixed in formaldehyde and permeabilized in methanol for 15 minutes at -20°C prior to blocking in 1% BSA for 1 hour at 25°C. The primary antibody was diluted 1/1000 and incubated with the sample for 2 hours at 25°C. The secondary antibody was Cy5<sup>®</sup>-conjugated Goat anti-Rabbit polyclonal, diluted 1/200.

**Please note:** All products are "FOR RESEARCH USE ONLY. NOT FOR USE IN DIAGNOSTIC PROCEDURES"

### Our Abpromise to you: Quality guaranteed and expert technical support

- Replacement or refund for products not performing as stated on the datasheet
- Valid for 12 months from date of delivery
- Response to your inquiry within 24 hours
- We provide support in Chinese, English, French, German, Japanese and Spanish
- Extensive multi-media technical resources to help you
- We investigate all quality concerns to ensure our products perform to the highest standards

If the product does not perform as described on this datasheet, we will offer a refund or replacement. For full details of the Abpromise, please visit <https://www.abcam.co.jp/abpromise> or contact our technical team.

### Terms and conditions

- Guarantee only valid for products bought direct from Abcam or one of our authorized distributors