




### Anti-MKP-1 antibody ab1351

★★★★★ 6 Abreviews 9 References 画像数 1

#### 製品の概要

製品名	Anti-MKP-1 antibody
製品の詳細	Goat polyclonal to MKP-1
由来種	Goat
特異性	The immunogen sequence for ab1351, anti MKP-1 antibody (aka DUSP1), shares 100% sequence homology to MKP-2 (aka DUSP4).
アプリケーション	適用あり: WB
種交差性	交差種: Human 交差が予測される動物種: Cow, Dog 
免疫原	Synthetic peptide corresponding to Human MKP-1 aa 355-367 (C terminal). The immunogen sequence for ab1351, anti MKP-1 antibody (aka DUSP1), shares 100% sequence homology to MKP-2 (aka DUSP4). Sequence: SYLQSPITTSPSC  Database link: <a href="#">P28562</a> <div>  <a href="#">Run BLAST with</a>  <a href="#">Run BLAST with</a> </div>
ポジティブ・コントロール	Recombinant Human MKP-1 protein ( <a href="#">ab114331</a> ) can be used as a positive control in WB. WB: HeLa cell lysate
特記事項	<p>The Life Science industry has been in the grips of a reproducibility crisis for a number of years. Abcam is leading the way in addressing this with our range of recombinant monoclonal antibodies and knockout edited cell lines for gold-standard validation. Please check that this product meets your needs before purchasing.</p> <p>If you have any questions, special requirements or concerns, please send us an inquiry and/or contact our Support team ahead of purchase. Recommended alternatives for this product can be found below, along with publications, customer reviews and Q&amp;As</p>

#### 製品の特性

製品の状態	Liquid
保存方法	Shipped at 4°C. Upon delivery aliquot and store at -20°C or -80°C. Avoid repeated freeze / thaw cycles.

バッファー	pH: 7.30 Preservative: 0.02% Sodium azide Constituents: Tris buffered saline, 0.5% BSA
精製度	Immunogen affinity purified
特記事項 (精製)	Purified from goat serum by ammonium sulphate precipitation followed by antigen affinity chromatography using the immunizing peptide.
ポリ/モノ	ポリクローナル
アイソタイプ	IgG

## アプリケーション

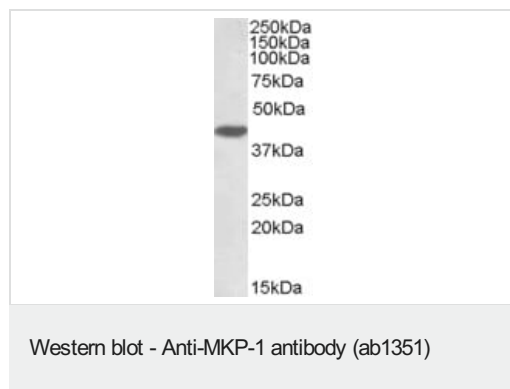
**The Abpromise guarantee**      Abpromise保証は、 次のテスト済みアプリケーションにおけるab1351の使用に適用されます  
アプリケーションノートには、推奨の開始希釈率がありますが、適切な希釈率につきましてはご検討ください。

アプリケーション	Abreviews	特記事項
WB	★★★★☆ (5)	Use a concentration of 1 - 3 µg/ml. Predicted molecular weight: 39 kDa. A 1 hour primary incubation is recommended for this product. We recommend <b>blocking in milk (3% milk in TBST) for 1 hour at room temperature.</b>

## ターゲット情報

機能	Dual specificity phosphatase that dephosphorylates MAP kinase ERK2 on both 'Thr-183' and 'Tyr-185'.
組織特異性	Expressed at high levels in the lung, liver placenta and pancreas. Moderate levels seen in the heart and skeletal muscle. Lower levels found in the brain and kidney.
配列類似性	Belongs to the protein-tyrosine phosphatase family. Non-receptor class dual specificity subfamily. Contains 1 rhodanese domain. Contains 1 tyrosine-protein phosphatase domain.

## 画像



Anti-MKP-1 antibody (ab1351) at 1 µg/ml + HeLa cell lysate at 35 µg

**Predicted band size:** 39 kDa

**Observed band size:** ~40 kDa

Primary incubation was 1 hour.

**Please note:** All products are "FOR RESEARCH USE ONLY. NOT FOR USE IN DIAGNOSTIC PROCEDURES"

### **Our Abpromise to you: Quality guaranteed and expert technical support**

---

- Replacement or refund for products not performing as stated on the datasheet
- Valid for 12 months from date of delivery
- Response to your inquiry within 24 hours
  
- We provide support in Chinese, English, French, German, Japanese and Spanish
- Extensive multi-media technical resources to help you
- We investigate all quality concerns to ensure our products perform to the highest standards

If the product does not perform as described on this datasheet, we will offer a refund or replacement. For full details of the Abpromise, please visit <https://www.abcam.co.jp/abpromise> or contact our technical team.

### **Terms and conditions**

---

- Guarantee only valid for products bought direct from Abcam or one of our authorized distributors