


Anti-Mitofusin 2 antibody ab50838

★★★★☆ [6 Abreviews](#) [49 References](#) [画像数 1](#)

製品の概要

製品名	Anti-Mitofusin 2 antibody
製品の詳細	Rabbit polyclonal to Mitofusin 2
由来種	Rabbit
アプリケーション	適用あり: WB
種交差性	交差種: Rat 交差が予測される動物種: Cynomolgus monkey, Orangutan 
免疫原	Synthetic peptide: KINGIFEQLGAYIQESAT with C-terminal added cysteine, conjugated to KLH, corresponding to N terminal amino acids 38-55 of Human Mitofusin 2

 [Run BLAST with](#)

 [Run BLAST with](#)

特記事項

The Life Science industry has been in the grips of a reproducibility crisis for a number of years. Abcam is leading the way in addressing this with our range of recombinant monoclonal antibodies and knockout edited cell lines for gold-standard validation. Please check that this product meets your needs before purchasing.

If you have any questions, special requirements or concerns, please send us an inquiry and/or contact our Support team ahead of purchase. Recommended alternatives for this product can be found below, along with publications, customer reviews and Q&As

製品の特性

製品の状態	Liquid
保存方法	Shipped at 4°C. Store at +4°C short term (1-2 weeks). Upon delivery aliquot. Store at -20°C or -80°C. Avoid freeze / thaw cycle.
バッファー	pH: 7.40 Preservative: 0.097% Sodium azide Constituent: 0.0268% PBS
精製度	Immunogen affinity purified
ポリ/モノ	ポリクローナル
アイソタイプ	IgG

アプリケーション

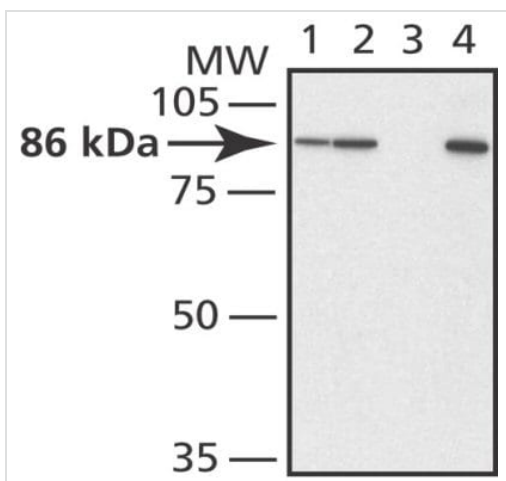
The Abpromise guarantee Abpromise保証は、次のテスト済みアプリケーションにおけるab50838の使用に適用されます
アプリケーションノートには、推奨の開始希釈率がありますが、適切な希釈率につきましてはご検討ください。

アプリケーション	Abreviews	特記事項
WB	★★★★☆ (5)	Use a concentration of 0.5 - 1 µg/ml. Detects a band of approximately 86 kDa (predicted molecular weight: 86 kDa).

ターゲット情報

機能	Essential transmembrane GTPase, which mediates mitochondrial fusion. Fusion of mitochondria occurs in many cell types and constitutes an important step in mitochondria morphology, which is balanced between fusion and fission. MFN2 acts independently of the cytoskeleton. It therefore plays a central role in mitochondrial metabolism and may be associated with obesity and/or apoptosis processes. Overexpression induces the formation of mitochondrial networks. Plays an important role in the regulation of vascular smooth muscle cell proliferation. Involved in the clearance of damaged mitochondria via selective autophagy (mitophagy). Is required for PARK2 recruitment to dysfunctional mitochondria. Involved in the control of unfolded protein response (UPR) upon ER stress including activation of apoptosis and autophagy during ER stress. Acts as an upstream regulator of EIF2AK3 and suppresses EIF2AK3 activation under basal conditions.
組織特異性	Ubiquitous; expressed at low level. Highly expressed in heart and kidney.
関連疾患	Charcot-Marie-Tooth disease 2A2 Neuropathy, hereditary motor and sensory, 6A
配列類似性	Belongs to the TRAFAC class dynamin-like GTPase superfamily. Dynamin/Fzo/YdjA family. Mitofusin subfamily. Contains 1 dynamin-type G (guanine nucleotide-binding) domain.
翻訳後修飾	Phosphorylated by PINK1. Ubiquitinated by non-degradative ubiquitin by PARK2, promoting mitochondrial fusion; deubiquitination by USP30 inhibits mitochondrial fusion.
細胞内局在	Mitochondrion outer membrane. Colocalizes with BAX during apoptosis.

画像



Western blot - Anti-Mitofusin 2 antibody (ab50838)

Lane 1 : Anti-Mitofusin 2 antibody (ab50838) at 0.5 µg/ml

Lanes 2-3 : Anti-Mitofusin 2 antibody (ab50838) at 1 µg/ml

Lane 4 : Anti-Mitofusin 2 antibody (ab50838) at 2 µg/ml

Lanes 1-2 & 4 : rat brain mitochondria extract

Lane 3 : rat brain mitochondria extract with Mitofusin 2 immunizing peptide at 5 µg/ml

Secondary

All lanes : Goat Anti-Rabbit IgG, Peroxidase conjugate and a chemiluminescent substrate

Developed using the ECL technique.

Predicted band size: 86 kDa

Observed band size: 86 kDa

Please note: All products are "FOR RESEARCH USE ONLY. NOT FOR USE IN DIAGNOSTIC PROCEDURES"

Our Abpromise to you: Quality guaranteed and expert technical support

- Replacement or refund for products not performing as stated on the datasheet
- Valid for 12 months from date of delivery
- Response to your inquiry within 24 hours
- We provide support in Chinese, English, French, German, Japanese and Spanish
- Extensive multi-media technical resources to help you
- We investigate all quality concerns to ensure our products perform to the highest standards

If the product does not perform as described on this datasheet, we will offer a refund or replacement. For full details of the Abpromise, please visit <https://www.abcam.co.jp/abpromise> or contact our technical team.

Terms and conditions

- Guarantee only valid for products bought direct from Abcam or one of our authorized distributors