

### Anti-Mitofilin antibody ab93323

[3 References](#) [画像数 3](#)

#### 製品の概要

製品名	Anti-Mitofilin antibody
製品の詳細	Rabbit polyclonal to Mitofilin
由来種	Rabbit
アプリケーション	<b>適用あり:</b> ICC/IF
種交差性	<b>交差種:</b> Human
免疫原	Recombinant full length protein (Human)
特記事項	<p>The Life Science industry has been in the grips of a reproducibility crisis for a number of years. Abcam is leading the way in addressing this with our range of recombinant monoclonal antibodies and knockout edited cell lines for gold-standard validation. Please check that this product meets your needs before purchasing.</p> <p>If you have any questions, special requirements or concerns, please send us an inquiry and/or contact our Support team ahead of purchase. Recommended alternatives for this product can be found below, along with publications, customer reviews and Q&amp;As</p>

#### 製品の特性

製品の状態	Liquid
保存方法	Shipped at 4°C. Upon delivery aliquot and store at -20°C. Avoid repeated freeze / thaw cycles.
バッファー	Preservative: 0.05% Sodium azide Constituent: Whole serum
精製度	Whole antiserum
ポリ/モノ	ポリクローナル
アイソタイプ	IgG

#### アプリケーション

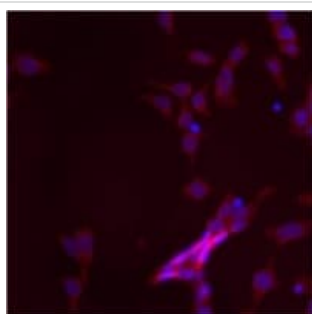
**The Abpromise guarantee** **Abpromise保証は、次のテスト済みアプリケーションにおけるab93323の使用に適用されます**  
アプリケーションノートには、推奨の開始希釈率がありますが、適切な希釈率につきましてはご検討ください。

アプリケーション	Abreviews	特記事項
ICC/IF		1/500.

## ターゲット情報

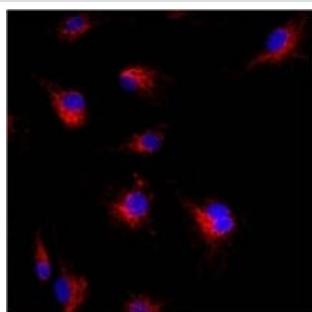
細胞内局在 Mitochondrion inner membrane.

## 画像



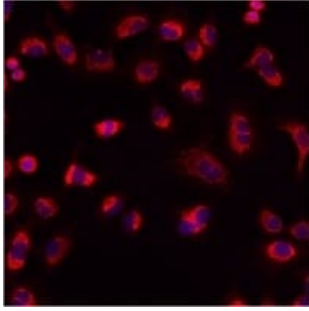
Immunocytochemistry/ Immunofluorescence - Anti-Mitofilin antibody (ab93323)

Immunofluorescent analysis of Mitofilin using anti-Mitofilin polyclonal antibody (ab93323) shows staining in p19 Cells.



Immunocytochemistry/ Immunofluorescence - Anti-Mitofilin antibody (ab93323)

Immunofluorescent analysis of Mitofilin using anti-Mitofilin polyclonal antibody (ab93323) shows staining in HMVEC Cells.



Immunofluorescent analysis of Mitofilin using anti-Mitofilin polyclonal antibody (ab93323) shows staining in A549 Cells.

Immunocytochemistry/ Immunofluorescence - Anti-Mitofilin antibody (ab93323)

**Please note:** All products are "FOR RESEARCH USE ONLY. NOT FOR USE IN DIAGNOSTIC PROCEDURES"

### **Our Abpromise to you: Quality guaranteed and expert technical support**

---

- Replacement or refund for products not performing as stated on the datasheet
- Valid for 12 months from date of delivery
- Response to your inquiry within 24 hours
  
- We provide support in Chinese, English, French, German, Japanese and Spanish
- Extensive multi-media technical resources to help you
- We investigate all quality concerns to ensure our products perform to the highest standards

If the product does not perform as described on this datasheet, we will offer a refund or replacement. For full details of the Abpromise, please visit <https://www.abcam.co.jp/abpromise> or contact our technical team.

### **Terms and conditions**

---

- Guarantee only valid for products bought direct from Abcam or one of our authorized distributors