

Anti-Mitochondrial ribosomal protein L11 antibody [EPR9111(B)] ab133789

リコンビナント RabMAb

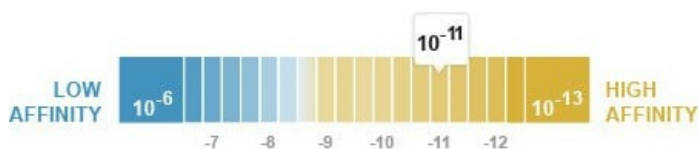
1 References 画像数 15

製品の概要

製品名	Anti-Mitochondrial ribosomal protein L11 antibody [EPR9111(B)]
製品の詳細	Rabbit monoclonal [EPR9111(B)] to Mitochondrial ribosomal protein L11
由来種	Rabbit
アプリケーション	適用あり: Flow Cyt (Intra), WB, IHC-P, ICC/IF
種交差性	交差種: Human
免疫原	Synthetic peptide. This information is proprietary to Abcam and/or its suppliers.
ポジティブ・コントロール	HeLa, HepG2, and LNCaP cells. Human kidney tissue, Human colon tissue, HepG2 cells
特記事項	<p>This product is a recombinant monoclonal antibody, which offers several advantages including:</p> <ul style="list-style-type: none"> - High batch-to-batch consistency and reproducibility - Improved sensitivity and specificity - Long-term security of supply - Animal-free production <p>For more information see here.</p> <p>Our RabMAb[®] technology is a patented hybridoma-based technology for making rabbit monoclonal antibodies. For details on our patents, please refer to RabMAb[®] patents.</p> <p>Rat: We have preliminary internal testing data to indicate this antibody may not react with this species. Please contact us for more information.</p>

製品の特性

製品の状態	Liquid
保存方法	Shipped at 4°C. Store at +4°C short term (1-2 weeks). Upon delivery aliquot. Store at -20°C long term. Avoid freeze / thaw cycle.
解離定数 (K _D 値)	K _D = 8.10 x 10 ⁻¹¹ M



[Learn more about K_D](#)

バッファー	pH: 7.20 Preservative: 0.01% Sodium azide Constituents: 59% PBS, 40% Glycerol, 0.05% BSA
精製度	Protein A purified
ポリ/モノ	モノクローナル
クローン名	EPR9111(B)
アイソタイプ	IgG

アプリケーション

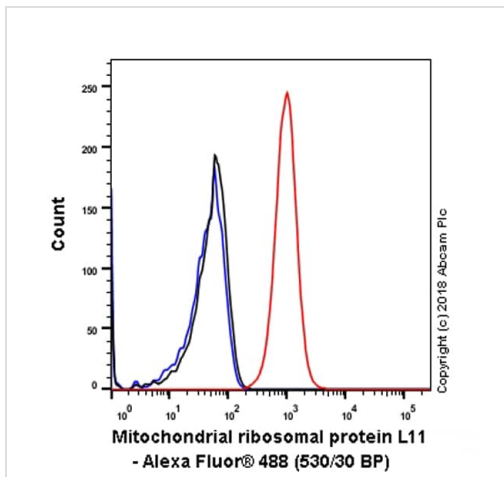
The Abpromise guarantee **Abpromise保証は、**次のテスト済みアプリケーションにおけるab133789の使用に適用されます
アプリケーションノートには、推奨の開始希釈率がありますが、適切な希釈率につきましてはご検討ください。

アプリケーション	Abreviews	特記事項
Flow Cyt (Intra)		1/100 - 1/1000. ab172730 - Rabbit monoclonal IgG, is suitable for use as an isotype control with this antibody.
WB		1/1000 - 1/10000. Predicted molecular weight: 21 kDa.
IHC-P		1/200 - 1/500. Perform heat mediated antigen retrieval with citrate buffer pH 6 before commencing with IHC staining protocol. See <u>IHC antigen retrieval protocols</u> .
ICC/IF		1/100. For unpurified format use at 1/250 - 1/500 dilution.

ターゲット情報

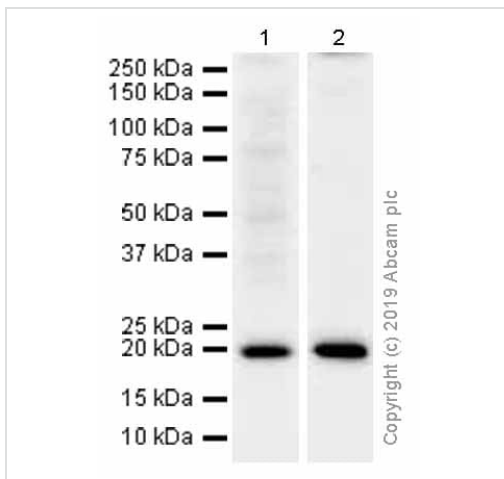
関連性	Mitochondrial ribosomal protein L11 belongs to the ribosomal protein L11P family.
細胞内局在	Mitochondrial

画像



Flow Cytometry (Intracellular) - Anti-Mitochondrial ribosomal protein L11 antibody [EPR9111(B)] (ab133789)

Intracellular Flow Cytometry analysis of HepG2 (Human hepatocellular carcinoma epithelial cell) cells labeling Mitochondrial ribosomal protein L11 with purified ab133789 at 1/120 dilution (10 µg/ml) (red). Cells were fixed with 4% Paraformaldehyde and permeabilised with 90% Methanol. A Goat anti rabbit IgG (Alexa Fluor® 488, [ab150077](#)) secondary antibody was used at 1/2000. Isotype control - Rabbit monoclonal IgG (Black). Unlabeled control - Cell without incubation with primary antibody and secondary antibody (Blue).



Western blot - Anti-Mitochondrial ribosomal protein L11 antibody [EPR9111(B)] (ab133789)

All lanes : Anti-Mitochondrial ribosomal protein L11 antibody [EPR9111(B)] (ab133789) at 1/10000 dilution (Purified)

Lane 1 : HeLa (Human cervix adenocarcinoma epithelial cell) whole cell lysates

Lane 2 : HepG2 (Human hepatocellular carcinoma epithelial cell) whole cell lysates

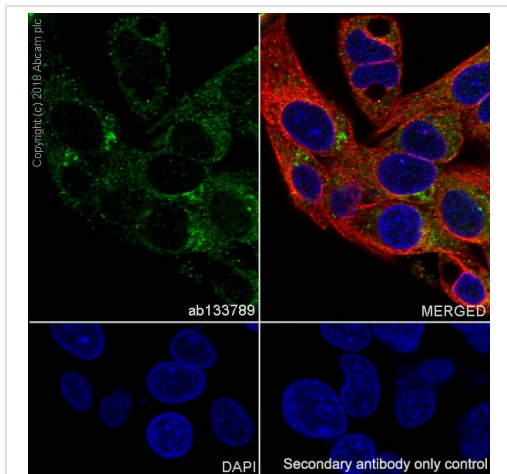
Lysates/proteins at 15 µg per lane.

Secondary

All lanes : Goat Anti-Rabbit IgG H&L (HRP) ([ab97051](#)) at 1/20000 dilution

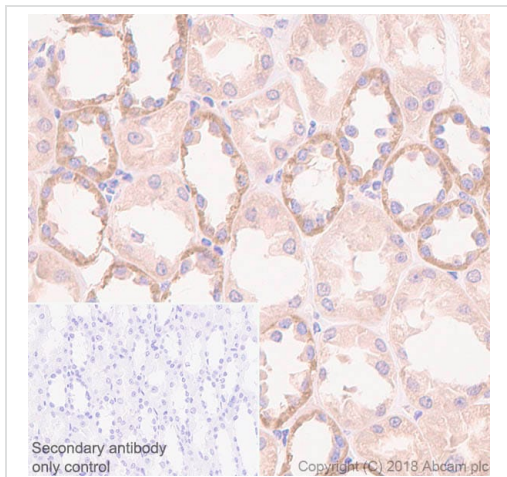
Predicted band size: 21 kDa

Observed band size: 21 kDa



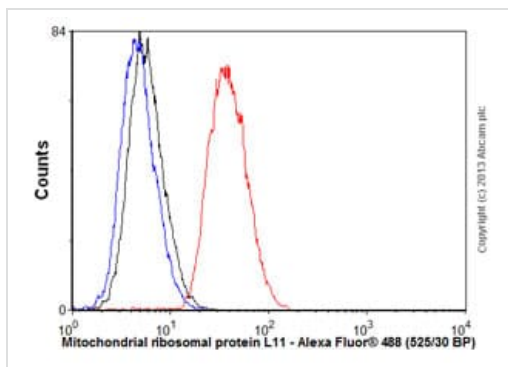
Immunocytochemistry/ Immunofluorescence - Anti-Mitochondrial ribosomal protein L11 antibody [EPR9111(B)] (ab133789)

Immunocytochemistry/ Immunofluorescence analysis of HepG2 (Human hepatocellular carcinoma epithelial cell) cells labeling Mitochondrial ribosomal protein L11 with purified ab133789 at 1:100 dilution (10 µg/ml). Cells were fixed in 4% Paraformaldehyde and permeabilized with 0.1% tritonX-100. Cells were counterstained with **ab195889** Anti-alpha Tubulin antibody [DM1A] - Microtubule Marker (Alexa Fluor® 594) at 1:200 (2.5 µg/ml). Goat anti rabbit IgG (Alexa Fluor® 488, **ab150077**) was used as the secondary antibody at 1:1000 (2 µg/ml) dilution. DAPI (blue) was used as nuclear counterstain. PBS instead of the primary antibody was used as the secondary antibody only control.



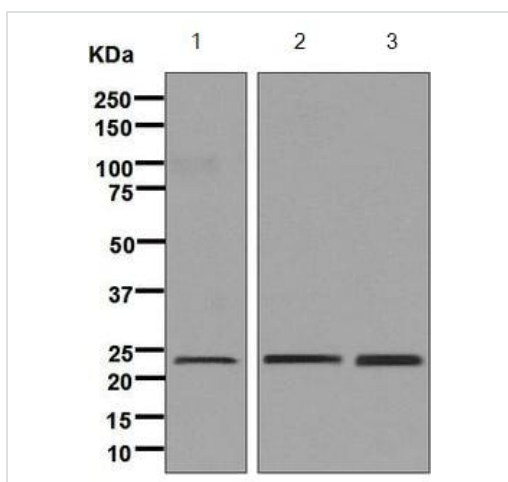
Immunohistochemistry (Formalin/PFA-fixed paraffin-embedded sections) - Anti-Mitochondrial ribosomal protein L11 antibody [EPR9111(B)] (ab133789)

Immunohistochemistry (Formalin/PFA-fixed paraffin-embedded sections) analysis of Human kidney tissue sections labeling Mitochondrial ribosomal protein L11 with purified ab133789 at 1:200 dilution (6.2 µg/ml). Heat mediated antigen retrieval was performed using **ab93684** (Tris/EDTA buffer, pH 9.0). ImmunoHistoProbe one step HRP Polymer (ready to use) was used as the secondary antibody. Negative control: PBS instead of the primary antibody. Hematoxylin was used as a counterstain.



Flow Cytometry (Intracellular) - Anti-Mitochondrial ribosomal protein L11 antibody [EPR9111(B)] (ab133789)

Overlay histogram showing HepG2 cells stained with unpurified ab133789 (red line). The cells were fixed with 4% paraformaldehyde (10 min) and then permeabilized with 0.1% PBS-Tween for 20 min. The cells were then incubated in 1x PBS / 10% normal goat serum / 0.3M glycine to block non-specific protein-protein interactions followed by the antibody (ab133789, 1/1000 dilution) for 30 min at 22°C. The secondary antibody used was Alexa Fluor® 488 goat anti-rabbit IgG (H&L) ([ab150077](#)) at 1/2000 dilution for 30 min at 22°C. Isotype control antibody (black line) was rabbit IgG (monoclonal) (0.1µg/1x10⁶ cells) used under the same conditions. Unlabelled sample (blue line) was also used as a control. Acquisition of >5,000 events were collected using a 20mW Argon ion laser (488nm) and 525/30 bandpass filter. This antibody gave a positive signal in HepG2 cells fixed with 80% methanol (5 min)/permeabilized with 0.1% PBS-Tween for 20 min used under the same conditions.



Western blot - Anti-Mitochondrial ribosomal protein L11 antibody [EPR9111(B)] (ab133789)

All lanes : Anti-Mitochondrial ribosomal protein L11 antibody [EPR9111(B)] (ab133789) at 1/1000 dilution (unpurified)

Lane 1 : HeLa cell lysate

Lane 2 : HepG2 cell lysate

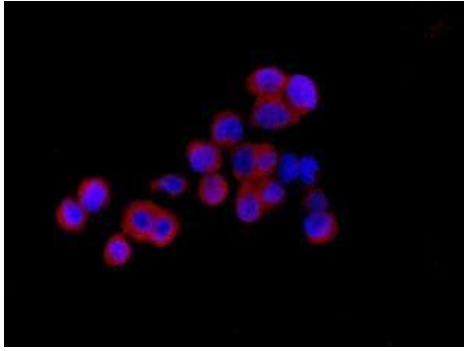
Lane 3 : LNCaP cell lysate

Lysates/proteins at 10 µg per lane.

Secondary

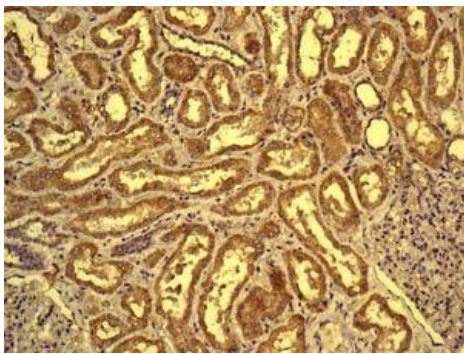
All lanes : HRP-labelled Goat anti-Rabbit at 1/2000 dilution

Predicted band size: 21 kDa



Immunocytochemistry/ Immunofluorescence - Anti-Mitochondrial ribosomal protein L11 antibody [EPR9111(B)] (ab133789)

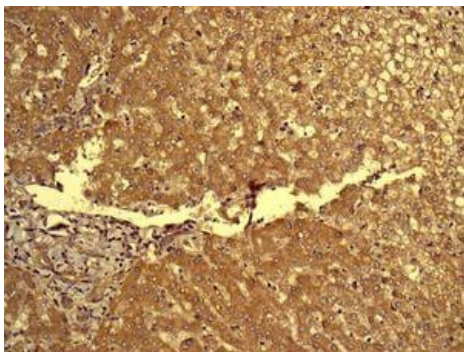
Immunofluorescent staining of Mitochondrial ribosomal protein L11 in HEPG2 cells using ab133789 (unpurified) at 1/250 dilution



Immunohistochemistry (Formalin/PFA-fixed paraffin-embedded sections) - Anti-Mitochondrial ribosomal protein L11 antibody [EPR9111(B)] (ab133789)

Immunohistochemical analysis of paraffin-embedded human kidney tissue labelling Mitochondrial ribosomal protein L11 using ab133789 (unpurified) at 1/250 dilution

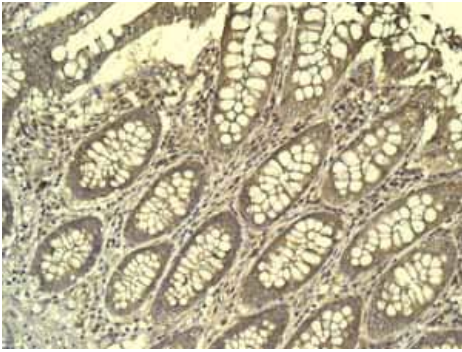
Heat mediated antigen retrieval was performed with citrate buffer pH 6 before commencing with IHC staining protocol.



Immunohistochemistry (Formalin/PFA-fixed paraffin-embedded sections) - Anti-Mitochondrial ribosomal protein L11 antibody [EPR9111(B)] (ab133789)

Immunohistochemical analysis of paraffin-embedded human colon tissue labelling Mitochondrial ribosomal protein L11 using ab133789 (unpurified) at 1/250 dilution

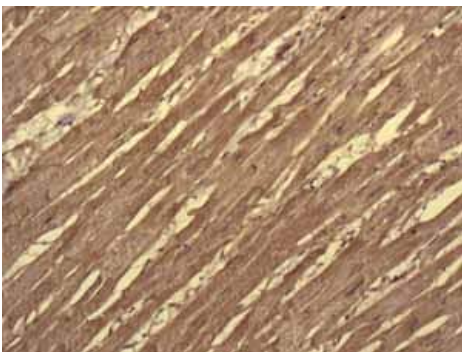
Heat mediated antigen retrieval was performed with citrate buffer pH 6 before commencing with IHC staining protocol.



Immunohistochemistry (Formalin/PFA-fixed paraffin-embedded sections) - Anti-Mitochondrial ribosomal protein L11 antibody [EPR9111(B)] (ab133789)

Immunohistochemical analysis using ab133789 (unpurified) showing positive staining in Normal colon tissue.

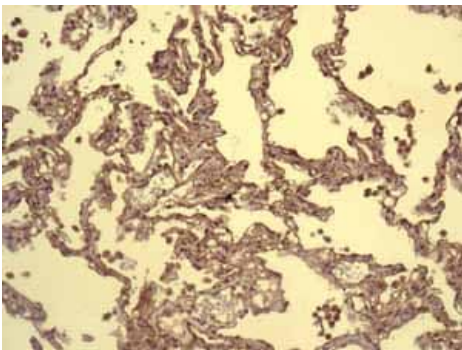
Heat mediated antigen retrieval was performed with citrate buffer pH 6 before commencing with IHC staining protocol.



Immunohistochemistry (Formalin/PFA-fixed paraffin-embedded sections) - Anti-Mitochondrial ribosomal protein L11 antibody [EPR9111(B)] (ab133789)

Immunohistochemical analysis using ab133789 (unpurified) showing positive staining in Normal heart tissue.

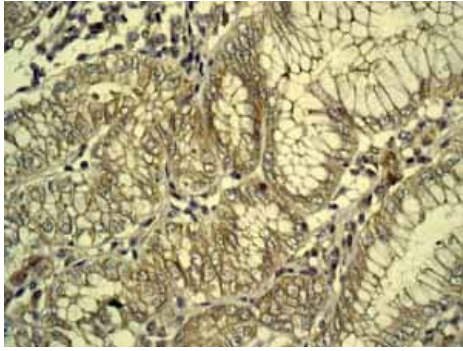
Heat mediated antigen retrieval was performed with citrate buffer pH 6 before commencing with IHC staining protocol.



Immunohistochemistry (Formalin/PFA-fixed paraffin-embedded sections) - Anti-Mitochondrial ribosomal protein L11 antibody [EPR9111(B)] (ab133789)

Immunohistochemical analysis using ab133789 (unpurified) showing positive staining in Normal lung tissue.

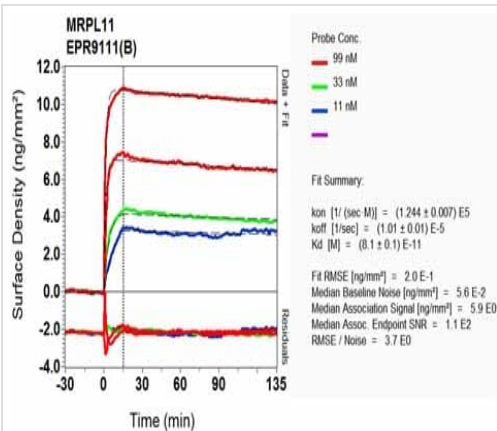
Heat mediated antigen retrieval was performed with citrate buffer pH 6 before commencing with IHC staining protocol.



Immunohistochemical analysis using ab133789 (unpurified) showing positive staining in Normal stomach tissue.

Heat mediated antigen retrieval was performed with citrate buffer pH 6 before commencing with IHC staining protocol.

Immunohistochemistry (Formalin/PFA-fixed paraffin-embedded sections) - Anti-Mitochondrial ribosomal protein L11 antibody [EPR9111(B)] (ab133789)



Equilibrium disassociation constant (K_D)

Learn more about K_D

[Click here to learn more about \$K_D\$](#)

OxLD Scanning - Anti-Mitochondrial ribosomal protein L11 antibody [EPR9111(B)] (ab133789)

Why choose a recombinant antibody?



Research with confidence
Consistent and reproducible results



Long-term and scalable supply
Recombinant technology



Success from the first experiment
Confirmed specificity



Ethical standards compliant
Animal-free production

Anti-Mitochondrial ribosomal protein L11 antibody [EPR9111(B)] (ab133789)

Please note: All products are "FOR RESEARCH USE ONLY. NOT FOR USE IN DIAGNOSTIC PROCEDURES"

Our Abpromise to you: Quality guaranteed and expert technical support

- Replacement or refund for products not performing as stated on the datasheet
- Valid for 12 months from date of delivery
- Response to your inquiry within 24 hours

- We provide support in Chinese, English, French, German, Japanese and Spanish
- Extensive multi-media technical resources to help you
- We investigate all quality concerns to ensure our products perform to the highest standards

If the product does not perform as described on this datasheet, we will offer a refund or replacement. For full details of the Abpromise, please visit <https://www.abcam.co.jp/abpromise> or contact our technical team.

Terms and conditions

- Guarantee only valid for products bought direct from Abcam or one of our authorized distributors