

Anti-Mitochondria antibody [AE-1] ab215892

画像数 6

製品の概要

製品名	Anti-Mitochondria antibody [AE-1]
製品の詳細	Mouse monoclonal [AE-1] to Mitochondria
由来種	Mouse
アプリケーション	適用あり: ICC, WB, IHC-P
種交差性	交差種: Human 非交差種: Mouse, Rat
免疫原	Tissue, cells or virus corresponding to Human Mitochondria. Semi-purified mitochondrial preparation
ポジティブ・コントロール	IHC: Human tonsil and pancreas tissues. ICC: Human HeLa cells WB: Human HeLa cells
特記事項	<p>The Life Science industry has been in the grips of a reproducibility crisis for a number of years. Abcam is leading the way in addressing this with our range of recombinant monoclonal antibodies and knockout edited cell lines for gold-standard validation. Please check that this product meets your needs before purchasing.</p> <p>If you have any questions, special requirements or concerns, please send us an inquiry and/or contact our Support team ahead of purchase. Recommended alternatives for this product can be found below, along with publications, customer reviews and Q&As</p>

製品の特性

製品の状態	Liquid
保存方法	Shipped at 4°C. Store at +4°C short term (1-2 weeks). Upon delivery aliquot. Store at -20°C long term. Avoid freeze / thaw cycle.
バッファー	pH: 7.2 Preservative: 0.05% Sodium azide Constituents: 99% PBS, 0.05% BSA
精製度	Protein A/G purified
特記事項(精製)	ab215892 is purified from Bioreactor Concentrate by Protein A/G.
ポリ/モノ	モノクローナル
クローン名	AE-1
アイソタイプ	IgG1

アプリケーション

The Abpromise guarantee **Abpromise保証は、次のテスト済みアプリケーションにおけるab215892の使用に適用されず**
アプリケーションノートには、推奨の開始希釈率がありますが、適切な希釈率につきましてはご検討ください。

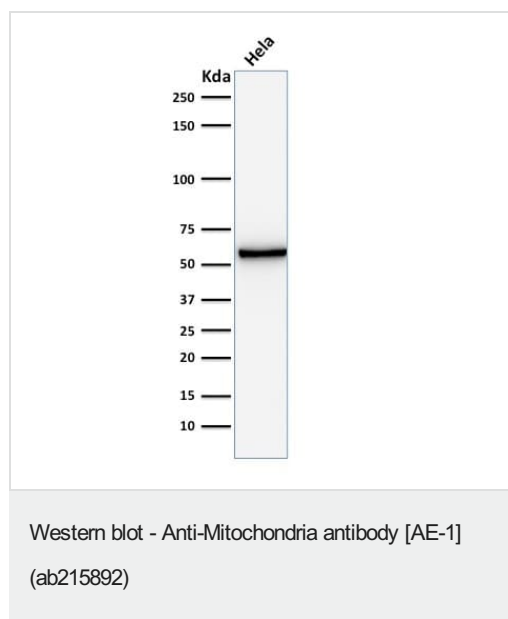
アプリケーション	Abreviews	特記事項
ICC		Use a concentration of 0.5 - 1 µg/ml.
WB		Use a concentration of 0.25 - 0.5 µg/ml.
IHC-P		Use a concentration of 0.5 - 1 µg/ml. Perform heat mediated antigen retrieval with Tris/EDTA buffer pH 9.0 before commencing with IHC staining protocol.

ターゲット情報

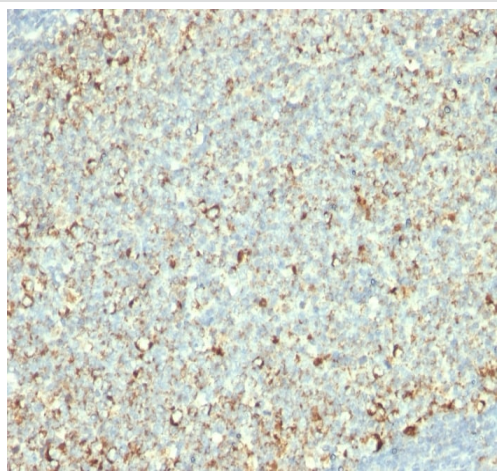
関連性 Mitochondria are the power house of the cell. They are distinct organelles with two membranes. Usually they are rod shaped, however they can be round. The outer membrane limits the organelle and the inner membrane is thrown into folds or shelves that project inward and are called "cristae mitochondriales".

細胞内局在 Mitochondrial

画像

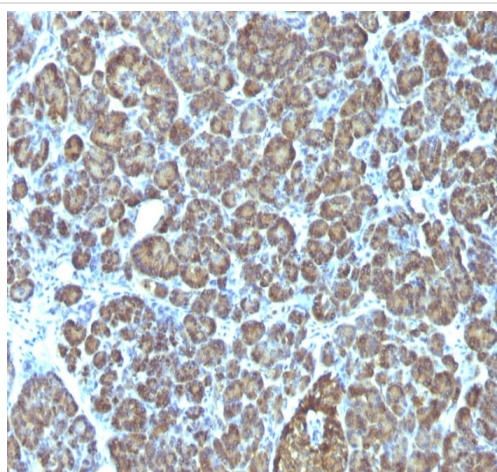


Anti-Mitochondria antibody [AE-1] (ab215892) at 0.5 µg/ml + HeLa cells (human epithelial cell line from cervix adenocarcinoma)



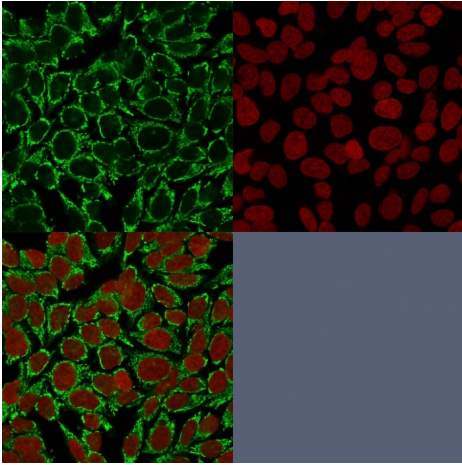
Immunohistochemistry (Formalin/PFA-fixed paraffin-embedded sections) - Anti-Mitochondria antibody [AE-1] (ab215892)

Immunohistochemistry (Formalin/PFA-fixed paraffin-embedded sections) analysis of human tonsil tissue labelling mitochondria with ab215892 at 2 μ g/ml dilution. Heat mediated antigen retrieval performed with tris/EDTA buffer pH 9 before commencing with IHC staining protocol.



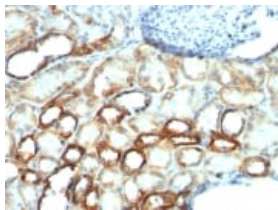
Immunohistochemistry (Formalin/PFA-fixed paraffin-embedded sections) - Anti-Mitochondria antibody [AE-1] (ab215892)

Immunohistochemistry (Formalin/PFA-fixed paraffin-embedded sections) analysis of human pancreas tissue labelling mitochondria with ab215892 at 2 μ g/ml dilution. Heat mediated antigen retrieval performed with tris/EDTA buffer pH 9 before commencing with IHC staining protocol.



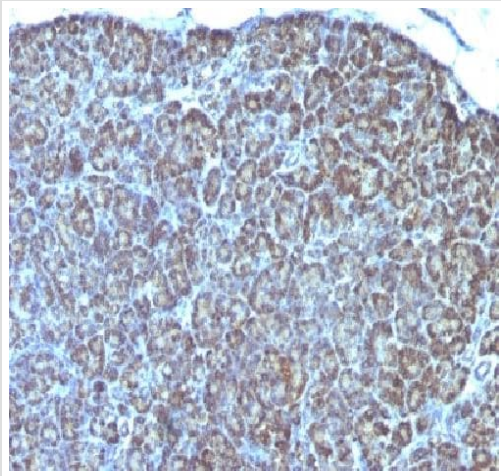
Immunocytochemistry confocal immunofluorescence of HeLa cells (human epithelial cell line from cervix adenocarcinoma) stained with ab215892 2 μ g/ml in green, and nuclear counter staining in RedDot red.

Immunocytochemistry - Anti-Mitochondria antibody
[AE-1] (ab215892)



Immunohistochemical analysis of formalin-fixed, paraffin-embedded Human tonsil tissue labeling Mitochondria with ab215892 at 1 μ g/ml.

Immunohistochemistry (Formalin/PFA-fixed paraffin-embedded sections) - Anti-Mitochondria antibody
[AE-1] (ab215892)



Immunohistochemical analysis of formalin-fixed, paraffin-embedded Human pancreas tissue labeling Mitochondria with ab215892 at 1µg/ml.

Immunohistochemistry (Formalin/PFA-fixed paraffin-embedded sections) - Anti-Mitochondria antibody [AE-1] (ab215892)

Please note: All products are "FOR RESEARCH USE ONLY. NOT FOR USE IN DIAGNOSTIC PROCEDURES"

Our Abpromise to you: Quality guaranteed and expert technical support

- Replacement or refund for products not performing as stated on the datasheet
- Valid for 12 months from date of delivery
- Response to your inquiry within 24 hours
- We provide support in Chinese, English, French, German, Japanese and Spanish
- Extensive multi-media technical resources to help you
- We investigate all quality concerns to ensure our products perform to the highest standards

If the product does not perform as described on this datasheet, we will offer a refund or replacement. For full details of the Abpromise, please visit <https://www.abcam.co.jp/abpromise> or contact our technical team.

Terms and conditions

- Guarantee only valid for products bought direct from Abcam or one of our authorized distributors