

Anti-MiTF antibody ab122982

★★★★★ [1 Abreviews](#) [16 References](#) [画像数 2](#)

製品の概要

製品名	Anti-MiTF antibody
製品の詳細	Rabbit polyclonal to MiTF
由来種	Rabbit
アプリケーション	適用あり: IHC-Fr, ICC/IF
種交差性	交差種: Mouse, Chicken
免疫原	Recombinant full length protein (His-tag) corresponding to Human MiTF. Database link: O75030

特記事項

The Life Science industry has been in the grips of a reproducibility crisis for a number of years. Abcam is leading the way in addressing this with our range of recombinant monoclonal antibodies and knockout edited cell lines for gold-standard validation. Please check that this product meets your needs before purchasing.

If you have any questions, special requirements or concerns, please send us an inquiry and/or contact our Support team ahead of purchase. Recommended alternatives for this product can be found below, along with publications, customer reviews and Q&As

製品の特性

製品の状態	Liquid
保存方法	Shipped at 4°C. Upon delivery aliquot. Store at -20°C. Avoid freeze / thaw cycle.
バッファー	pH: 6 Preservative: 0.05% Sodium azide Constituent: 99% Whole serum
精製度	Whole antiserum
ポリ/モノ	ポリクローナル
アイソタイプ	IgG

アプリケーション

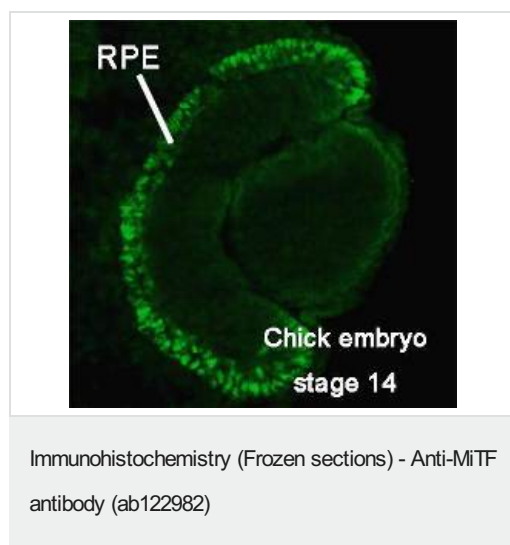
The Abpromise guarantee [Abpromise保証は、次のテスト済みアプリケーションにおけるab122982の使用に適用されず](#)
アプリケーションノートには、推奨の開始希釈率がありますが、適切な希釈率につきましてはご検討ください。

アプリケーション	Abreviews	特記事項
IHC-Fr		1/300 - 1/1000.
ICC/IF		1/300.

ターゲット情報

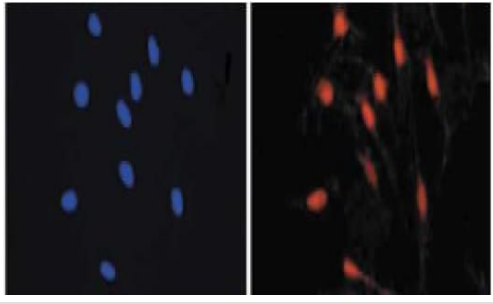
機能	Transcription factor for tyrosinase and tyrosinase-related protein 1. Binds to a symmetrical DNA sequence (E-boxes) (5'-CACGTG-3') found in the tyrosinase promoter. Plays a critical role in the differentiation of various cell types as neural crest-derived melanocytes, mast cells, osteoclasts and optic cup-derived retinal pigment epithelium.
組織特異性	Isoform M is exclusively expressed in melanocytes and melanoma cells. Isoform A and isoform H are widely expressed in many cell types including melanocytes and retinal pigment epithelium (RPE). Isoform C is expressed in many cell types including RPE but not in melanocyte-lineage cells.
関連疾患	Defects in MITF are the cause of Waardenburg syndrome type 2A (WS2A) [MIM:193510]. It is a dominant inherited disorder characterized by sensorineural hearing loss and patches of depigmentation. The features show variable expression and penetrance. Defects in MITF are a cause of Waardenburg syndrome type 2 with ocular albinism (WS2-OA) [MIM:103470]. It is an ocular albinism with sensorineural deafness. Defects in MITF are the cause of Tietz syndrome (TIETZS) [MIM:103500]. It is an autosomal dominant disorder characterized by generalized hypopigmentation and profound, congenital, bilateral deafness. Penetrance is complete.
配列類似性	Belongs to the MiT/TFE family. Contains 1 basic helix-loop-helix (bHLH) domain.
翻訳後修飾	Phosphorylation at Ser-405 significantly enhances the ability to bind the tyrosinase promoter.
細胞内局在	Nucleus.

画像



Immunohistochemical analysis of RPE (Retinal Pigment Epithelium) in chicken embryo (stage 14) labelling MiTF with ab122982 at dilution of 1/300. Embryo was fixed with paraformaldehyde and embedded in OCT compound and sectioned with a cryostat at 8 μ m. Alexa Fluor[®] 488 conjugated anti-rabbit IgG was used at the secondary antibody.

At stage 14, Mitif protein is detected throughout the RPE (Retinal Pigment Epithelium).



Immunocytochemistry/ Immunofluorescence - Anti-MiTF antibody (ab122982)

Immunofluorescence analysis of mouse primary melanocytes labelling MiTF with ab122982 at a dilution of 1/300 (right). Nuclei counterstained with DAPI (blue) (left).

Please note: All products are "FOR RESEARCH USE ONLY. NOT FOR USE IN DIAGNOSTIC PROCEDURES"

Our Abpromise to you: Quality guaranteed and expert technical support

- Replacement or refund for products not performing as stated on the datasheet
- Valid for 12 months from date of delivery
- Response to your inquiry within 24 hours
- We provide support in Chinese, English, French, German, Japanese and Spanish
- Extensive multi-media technical resources to help you
- We investigate all quality concerns to ensure our products perform to the highest standards

If the product does not perform as described on this datasheet, we will offer a refund or replacement. For full details of the Abpromise, please visit <https://www.abcam.co.jp/abpromise> or contact our technical team.

Terms and conditions

- Guarantee only valid for products bought direct from Abcam or one of our authorized distributors