

Anti-Mint3 antibody ab3450

★★★★★ [1 Abreviews](#) [画像数 2](#)

製品の概要

製品名	Anti-Mint3 antibody
製品の詳細	Rabbit polyclonal to Mint3
由来種	Rabbit
アプリケーション	適用あり: WB, ICC
種交差性	交差種: Mouse
免疫原	Synthetic peptide corresponding to Rat Mint3 aa 1-19. Sequence: MEFLPEPQHPPGPPTMDLE

(Peptide available as [ab4981](#))

 [Run BLAST with](#)

 [Run BLAST with](#)

特記事項

The Life Science industry has been in the grips of a reproducibility crisis for a number of years. Abcam is leading the way in addressing this with our range of recombinant monoclonal antibodies and knockout edited cell lines for gold-standard validation. Please check that this product meets your needs before purchasing.

If you have any questions, special requirements or concerns, please send us an inquiry and/or contact our Support team ahead of purchase. Recommended alternatives for this product can be found below, along with publications, customer reviews and Q&As

製品の特性

製品の状態	Liquid
保存方法	Shipped at 4°C. Store at +4°C short term (1-2 weeks). Upon delivery aliquot. Store at -20°C or -80°C. Avoid freeze / thaw cycle.
バッファー	Preservative: 0.05% Sodium azide Constituents: 0.1% BSA, 99% PBS
精製度	Immunogen affinity purified
一次抗体 備考	The munc-18 interacting (Mint) protein family is a group of evolutionarily conserved adaptor proteins that function in membrane transport and organization. In mammals, there exist three mint isoforms, Mint 1, 2, and 3. Although there is little amino acid sequence conservation in the amino-terminal half, the carboxy-terminal half of these proteins is highly conserved. Within this conserved

portion there exists a phosphotyrosine-binding (PTB) and a PSD-95/DLG-A/ZO-1 (PDZ) domain, which function as protein interaction modules. Mint 1 and 2 appear to be expressed exclusively in the brain and are found to bind to munc-18, an essential component of the synaptic vesicle fusion machinery. Mint 3 is ubiquitously expressed in all tissues and is expressed at the lowest levels in the brain and testis. Studies show that Mint 3 does not interact with munc-18. Mint 3 has been found to interact with the Alzheimer's Disease-related amyloid precursor protein (APP) and does so through its PTB and PDZ domains. It has been suggested that Mint 3 links APP to other transport machinery components, thereby regulating its transport, endocytosis, and metabolism. Abnormal APP metabolism has been shown to be the cause of an early-onset type of Alzheimer's disease.

ポリ/モノ
アイソタイプ

ポリクローナル
IgG

アプリケーション

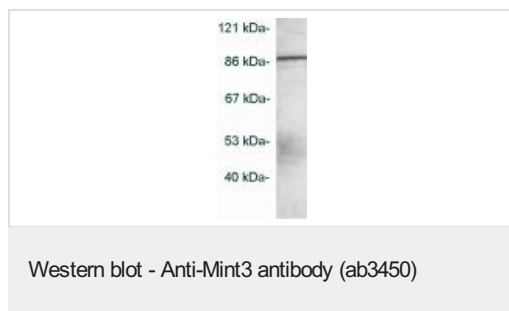
The Abpromise guarantee **Abpromise保証は、次のテスト済みアプリケーションにおけるab3450の使用に適用されます**
アプリケーションノートには、推奨の開始希釈率がありますが、適切な希釈率につきましてはご検討ください。

アプリケーション	Abreviews	特記事項
WB		Use a concentration of 2 µg/ml. Detects a band of approximately 86 kDa (predicted molecular weight: 61 kDa). By Western blot, this antibody detects an ~86 kDa protein representing Mint 3 from AtT20 cell extract.
ICC		Use a concentration of 2 µg/ml.

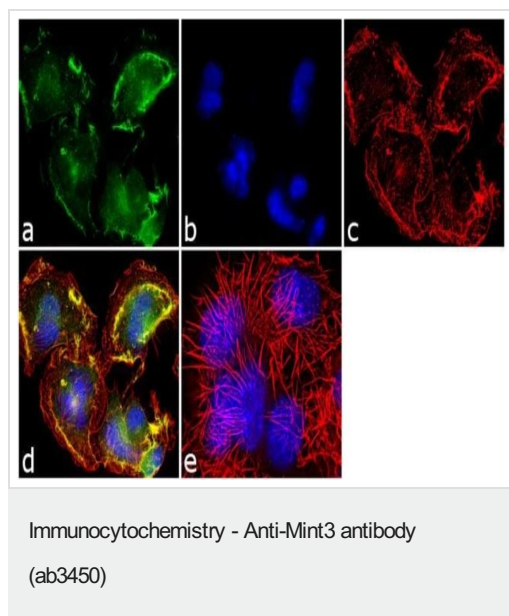
ターゲット情報

機能	May modulate processing of the beta-amyloid precursor protein (APP) and hence formation of beta-APP. May enhance the activity of HIF1A in macrophages by inhibiting the activity of HIF1AN.
組織特異性	Expressed in all tissues examined with lower levels in brain and testis.
配列類似性	Contains 2 PDZ (DHR) domains. Contains 1 PID domain.
ドメイン	Composed of an N-terminal domain, a middle phosphotyrosine-binding domain (PID/PTB) that mediates binding with the cytoplasmic domain of the beta-amyloid precursor protein, and two C-terminal PDZ domains thought to attach proteins to the plasma membrane.
細胞内局在	Cytoplasm > perinuclear region.

画像



Western blot detection of Mint3 on AtT20 cell extract using ab3450.



Neuro-2a cells stained for Mint3 (green) using ab3450 at 2 µg/mL in immunocytochemical analysis. Nuclei (Panel b: blue) were stained with SlowFade® Gold Antifade Mountant with. F-actin (Panel c: red) was stained with Alexa Fluor® 555 Rhodamine Phalloidin. Panel d represents the merged image showing membranous localization. Panel e shows the no primary antibody control.

Please note: All products are "FOR RESEARCH USE ONLY. NOT FOR USE IN DIAGNOSTIC PROCEDURES"

Our Abpromise to you: Quality guaranteed and expert technical support

- Replacement or refund for products not performing as stated on the datasheet
- Valid for 12 months from date of delivery
- Response to your inquiry within 24 hours
- We provide support in Chinese, English, French, German, Japanese and Spanish
- Extensive multi-media technical resources to help you
- We investigate all quality concerns to ensure our products perform to the highest standards

If the product does not perform as described on this datasheet, we will offer a refund or replacement. For full details of the Abpromise, please visit <https://www.abcam.co.jp/abpromise> or contact our technical team.

Terms and conditions

- Guarantee only valid for products bought direct from Abcam or one of our authorized distributors

