

Anti-Mineralocorticoid Receptor antibody [H10E4C9F] ab2774

★★★★★ 6 Abreviews 26 References 画像数 10

製品の概要

製品名	Anti-Mineralocorticoid Receptor antibody [H10E4C9F]
製品の詳細	Mouse monoclonal [H10E4C9F] to Mineralocorticoid Receptor
由来種	Mouse
アプリケーション	適用あり: Flow Cyt, IHC-P, ICC/IF 適用なし: IP
種交差性	交差種: Human
免疫原	Chemical/ Small Molecule corresponding to Mineralocorticoid Receptor. Aldosterone 3. This antibody was produced using the anti idiotypic method.
特記事項	<p>The Life Science industry has been in the grips of a reproducibility crisis for a number of years. Abcam is leading the way in addressing this with our range of recombinant monoclonal antibodies and knockout edited cell lines for gold-standard validation. Please check that this product meets your needs before purchasing.</p> <p>If you have any questions, special requirements or concerns, please send us an inquiry and/or contact our Support team ahead of purchase. Recommended alternatives for this product can be found below, along with publications, customer reviews and Q&As</p>

製品の特性

製品の状態	Liquid
保存方法	Shipped at 4°C. Store at +4°C short term (1-2 weeks). Upon delivery aliquot. Store at -20°C or -80°C. Avoid freeze / thaw cycle.
バッファー	Preservative: 0.05% Sodium azide Constituent: PBS
精製度	Protein A purified
ポリ/モノ	モノクローナル
クローン名	H10E4C9F
アイソタイプ	IgG1

アプリケーション

The Abpromise guarantee

Abpromise保証は、次のテスト済みアプリケーションにおけるab2774の使用に適用されます

アプリケーションノートには、推奨の開始希釈率がありますが、適切な希釈率につきましてはご検討ください。

アプリケーション	Abreviews	特記事項
Flow Cyt		Use at an assay dependent concentration.
IHC-P	★★★★★ (1)	1/100. Immunohistochemical staining of MR in rabbit atrium with ab2774 results in strong staining of myocytes and endothelial cells. In immunohistochemical studies, staining with ab2774 is blocked by pre incubating the sample with aldosterone.
ICC/IF	★★★★★ (1)	1/100.

追加情報

Is unsuitable for IP.

ターゲット情報

機能

Receptor for both mineralocorticoids (MC) such as aldosterone and glucocorticoids (GC) such as corticosterone or cortisol. Binds to mineralocorticoid response elements (MRE) and transactivates target genes. The effect of MC is to increase ion and water transport and thus raise extracellular fluid volume and blood pressure and lower potassium levels.

組織特異性

Ubiquitous. Highly expressed in distal tubules, convoluted tubules and cortical collecting duct in kidney, and in sweat glands. Detected at lower levels in cardiomyocytes, in epidermis and in colon enterocytes.

関連疾患

Defects in NR3C2 are a cause of autosomal dominant pseudohypoaldosteronism type I (AD-PHA1) [MIM:177735]. PHA1 is characterized by urinary salt wasting, resulting from target organ unresponsiveness to mineralocorticoids. There are 2 forms of PHA1: the autosomal dominant form that is mild, and the recessive form which is more severe and due to defects in any of the epithelial sodium channel subunits. In AD-PHA1 the target organ defect is confined to kidney. Clinical expression can vary from asymptomatic to moderate. It may be severe at birth, but symptoms remit with age. Familial and sporadic cases have been reported.

Defects in NR3C2 are a cause of early-onset hypertension with severe exacerbation in pregnancy (EOHSEP) [MIM:605115]. Inheritance is autosomal dominant. The disease is characterized by the onset of severe hypertension before the age of 20, and by suppression of aldosterone secretion.

配列類似性

Belongs to the nuclear hormone receptor family. NR3 subfamily.
Contains 1 nuclear receptor DNA-binding domain.

ドメイン

Composed of three domains: a modulating N-terminal domain, a DNA-binding domain and a C-terminal ligand-binding domain.

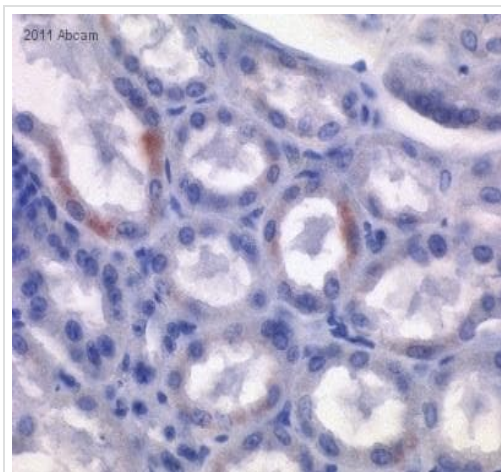
翻訳後修飾

Phosphorylated.

細胞内局在

Cytoplasm. Nucleus. Endoplasmic reticulum membrane. Cytoplasmic and nuclear in the absence of ligand; nuclear after ligand-binding. When bound to HSD11B2, it is found associated with the endoplasmic reticulum membrane.

画像

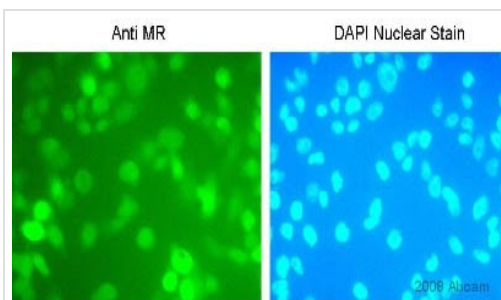


Immunohistochemistry (Formalin/PFA-fixed paraffin-embedded sections) - Anti-Mineralocorticoid Receptor antibody [H10E4C9F] (ab2774)

Image courtesy of an abreview from Mrs. Barbara Heitkönig.

Formalin-fixed, paraffin-embedded cow kidney tissue stained for Mineralocorticoid Receptor using ab2774 at 1/200 dilution in immunohistochemical analysis.

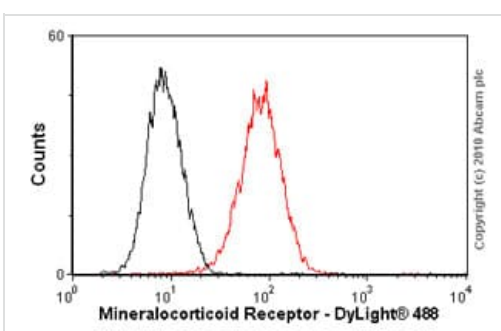
Heat mediated Antigen retrieval using Citrate buffer, 10 mM pH 6.0 was used.



Immunocytochemistry/ Immunofluorescence - Anti-Mineralocorticoid Receptor antibody [H10E4C9F] (ab2774)

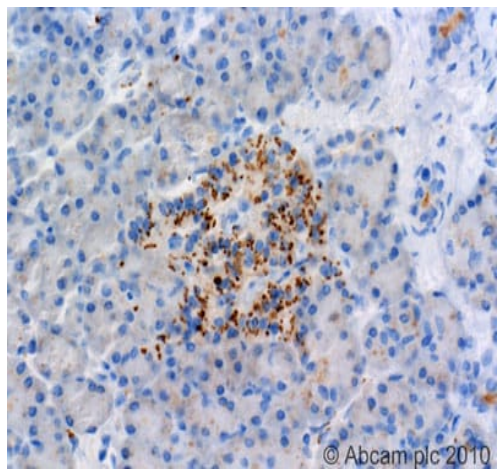
Image courtesy of an anonymous Abreview.

ab2774 staining Mineralocorticoid Receptor in hamster CHO K1 cells by Immunocytochemistry/ Immunofluorescence. The cells were formaldehyde fixed and then blocked using TBS, 3% Dried Milk, 0.1 % Triton X-100 for 20 minutes at 22°C. Samples were then incubated with primary antibody at 1/100 for 1 hour at 22°C. The secondary antibody used was a goat anti-mouse IgG conjugated to FITC used at a 1/400 dilution (left hand image). In the right hand image DAPI was used to stain the cell nuclei blue.



Flow Cytometry - Anti-Mineralocorticoid Receptor antibody [H10E4C9F] (ab2774)

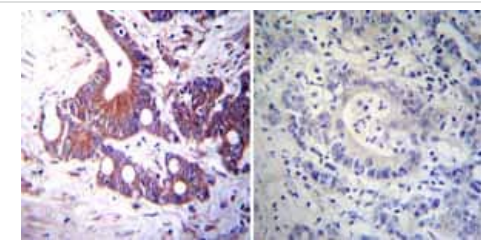
Overlay histogram showing HEK293 cells stained with ab2774 (red line). The cells were fixed with methanol (5 min) and then permeabilized with 0.1% PBS-Tween for 20 min. The cells were then incubated in 1x PBS / 10% normal goat serum / 0.3M glycine to block non-specific protein-protein interactions followed by the antibody (ab2774, 1/20 dilution) for 30 min at 22°C. The secondary antibody used was DyLight® 488 goat anti-mouse IgG (H+L) ([ab96879](#)) at 1/500 dilution for 30 min at 22°C. Isotype control antibody (black line) was mouse IgG1 [ICIGG1] ([ab91353](#), 2µg/1x10⁶ cells) used under the same conditions. Acquisition of >5,000 events was performed. This antibody gave a slightly decreased signal in HEK293 cells fixed with 4% paraformaldehyde (10 min)/permeabilized in 0.1% PBS-Tween used under the same conditions.



Immunohistochemistry (Formalin/PFA-fixed paraffin-embedded sections) - Anti-Mineralocorticoid Receptor antibody [H10E4C9F] (ab2774)

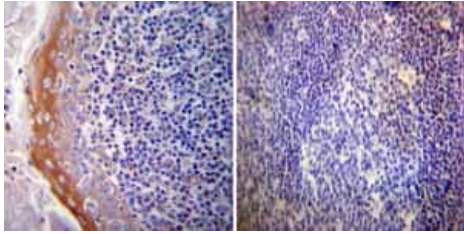
ab2774 (4µg/ml) staining mineralocorticoid receptor in human pancreas, using an automated system (DAKO Autostainer Plus). Using this protocol there is strong staining of the islets of Langerhans and some weaker staining of the exocrine cells of the pancreas.

Sections were rehydrated and antigen retrieved with the Dako 3 in 1 AR buffer EDTA pH 9.0 in a DAKO PT link. Slides were peroxidase blocked in 3% H₂O₂ in methanol for 10 mins. They were then blocked with Dako Protein block for 10 minutes (containing casein 0.25% in PBS) then incubated with primary antibody for 20 min and detected with Dako envision flex amplification kit for 30 minutes. Colorimetric detection was completed with Diaminobenzidine for 5 minutes. Slides were counterstained with Haematoxylin and coverslipped under DePeX. Please note that, for manual staining, optimization of primary antibody concentration and incubation time is recommended. Signal amplification may be required.



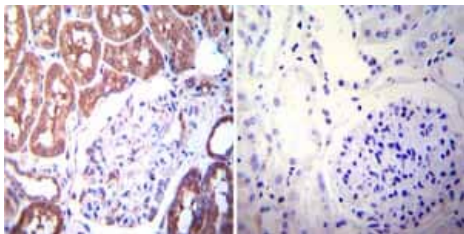
Immunohistochemistry (Formalin/PFA-fixed paraffin-embedded sections) - Anti-Mineralocorticoid Receptor antibody [H10E4C9F] (ab2774)

Immunohistochemistry was performed on both normal and cancer biopsies of deparaffinized Human colon carcinoma tissues. To expose target proteins heat induced antigen retrieval was performed using 10mM sodium citrate (pH6.0) buffer microwaved for 8-15 minutes. Following antigen retrieval tissues were blocked in 3% BSA-PBS for 30 minutes at room temperature. Tissues were then probed at a dilution of 1:100 with a mouse monoclonal antibody recognizing Mineralocorticoid Receptor ab2774 or without primary antibody (negative control) overnight at 4°C in a humidified chamber. Tissues were washed extensively with PBST and endogenous peroxidase activity was quenched with a peroxidase suppressor. Detection was performed using a biotin-conjugated secondary antibody and SA-HRP followed by colorimetric detection using DAB. Tissues were counterstained with hematoxylin and prepped for mounting.



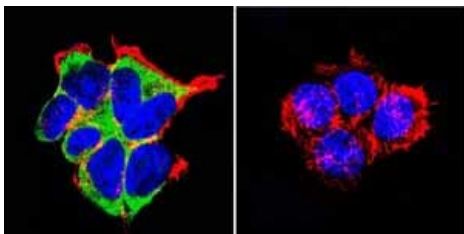
Immunohistochemistry (Formalin/PFA-fixed paraffin-embedded sections) - Anti-Mineralocorticoid Receptor antibody [H10E4C9F] (ab2774)

Immunohistochemistry was performed on both normal and cancer biopsies of deparaffinized Human tonsil tissue tissues. To expose target proteins heat induced antigen retrieval was performed using 10mM sodium citrate (pH6.0) buffer microwaved for 8-15 minutes. Following antigen retrieval tissues were blocked in 3% BSA-PBS for 30 minutes at room temperature. Tissues were then probed at a dilution of 1:100 with a mouse monoclonal antibody recognizing Mineralocorticoid Receptor ab2774 or without primary antibody (negative control) overnight at 4°C in a humidified chamber. Tissues were washed extensively with PBST and endogenous peroxidase activity was quenched with a peroxidase suppressor. Detection was performed using a biotin-conjugated secondary antibody and SA-HRP followed by colorimetric detection using DAB. Tissues were counterstained with hematoxylin and prepped for mounting.



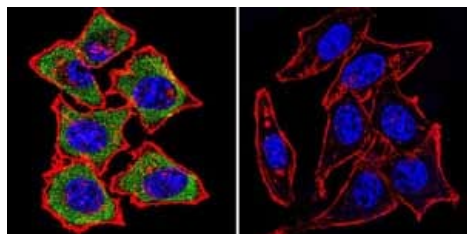
Immunohistochemistry (Formalin/PFA-fixed paraffin-embedded sections) - Anti-Mineralocorticoid Receptor antibody [H10E4C9F] (ab2774)

Immunohistochemistry was performed on both normal and cancer biopsies of deparaffinized Human kidney tissue tissues. To expose target proteins heat induced antigen retrieval was performed using 10mM sodium citrate (pH6.0) buffer microwaved for 8-15 minutes. Following antigen retrieval tissues were blocked in 3% BSA-PBS for 30 minutes at room temperature. Tissues were then probed at a dilution of 1:200 with a mouse monoclonal antibody recognizing Mineralocorticoid Receptor ab2774 or without primary antibody (negative control) overnight at 4°C in a humidified chamber. Tissues were washed extensively with PBST and endogenous peroxidase activity was quenched with a peroxidase suppressor. Detection was performed using a biotin-conjugated secondary antibody and SA-HRP followed by colorimetric detection using DAB. Tissues were counterstained with hematoxylin and prepped for mounting.



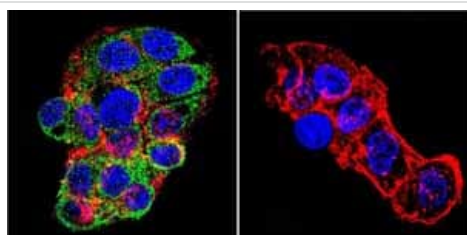
Immunocytochemistry/ Immunofluorescence - Anti-Mineralocorticoid Receptor antibody [H10E4C9F] (ab2774)

Immunofluorescent analysis of Mineralocorticoid Receptor using Mineralocorticoid Receptor Monoclonal antibody (H10E4C9F) ab2774 shows staining in HEK293 cells. Mineralocorticoid Receptor staining (green) F-Actin staining with Phalloidin (red) and nuclei with DAPI (blue) is shown. Cells were grown on chamber slides and fixed with formaldehyde prior to staining. Cells were probed without (control) or with or an antibody recognizing Mineralocorticoid Receptor ab2774 at a dilution of 1:20-1:200 over night at 4 °C washed with PBS and incubated with a DyLight-488 conjugated secondary antibody. Images were taken at 60X magnification.



Immunocytochemistry/ Immunofluorescence - Anti-Mineralocorticoid Receptor antibody [H10E4C9F] (ab2774)

Immunofluorescent analysis of Mineralocorticoid Receptor using Mineralocorticoid Receptor Monoclonal antibody (H10E4C9F) ab2774 shows staining in HeLa cells. Mineralocorticoid Receptor staining (green) F-Actin staining with Phalloidin (red) and nuclei with DAPI (blue) is shown. Cells were grown on chamber slides and fixed with formaldehyde prior to staining. Cells were probed without (control) or with or an antibody recognizing Mineralocorticoid Receptor ab2774 at a dilution of 1:20-1:200 over night at 4 °C washed with PBS and incubated with a DyLight-488 conjugated secondary antibody. Images were taken at 60X magnification.



Immunocytochemistry/ Immunofluorescence - Anti-Mineralocorticoid Receptor antibody [H10E4C9F] (ab2774)

Immunofluorescent analysis of Mineralocorticoid Receptor using Mineralocorticoid Receptor Monoclonal antibody (H10E4C9F) ab2774 shows staining in HepG2 cells. Mineralocorticoid Receptor staining (green) F-Actin staining with Phalloidin (red) and nuclei with DAPI (blue) is shown. Cells were grown on chamber slides and fixed with formaldehyde prior to staining. Cells were probed without (control) or with or an antibody recognizing Mineralocorticoid Receptor ab2774 at a dilution of 1:20-1:200 over night at 4 °C washed with PBS and incubated with a DyLight-488 conjugated secondary antibody . Images were taken at 60X magnification.

Please note: All products are "FOR RESEARCH USE ONLY. NOT FOR USE IN DIAGNOSTIC PROCEDURES"

Our Abpromise to you: Quality guaranteed and expert technical support

- Replacement or refund for products not performing as stated on the datasheet
- Valid for 12 months from date of delivery
- Response to your inquiry within 24 hours
- We provide support in Chinese, English, French, German, Japanese and Spanish
- Extensive multi-media technical resources to help you
- We investigate all quality concerns to ensure our products perform to the highest standards

If the product does not perform as described on this datasheet, we will offer a refund or replacement. For full details of the Abpromise, please visit <https://www.abcam.co.jp/abpromise> or contact our technical team.

Terms and conditions

- Guarantee only valid for products bought direct from Abcam or one of our authorized distributors