

Anti-MICB antibody [EPR26362-65] ab300485

リコンビナント RabMAb[®]

画像数 7

製品の概要

製品名	Anti-MICB antibody [EPR26362-65]
製品の詳細	Rabbit monoclonal [EPR26362-65] to MICB
由来種	Rabbit
アプリケーション	適用あり: IP, WB, Flow Cyt, ICC/IF 適用なし: IHC-P
種交差性	交差種: Human 非交差種: Mouse, Rat
免疫原	Recombinant fragment. This information is proprietary to Abcam and/or its suppliers.
ポジティブ・コントロール	WB: Purified his-tagged human MICB recombinant protein. K-562, U266B1 whole cell lysate. K562 whole cell lysate treated with Protein Deglycosylation Mix II. ICC/IF: K-562 cells. Flow Cyt: K562 (human chronic myelogenous leukemia lymphoblast) whole cell lysate. IP: K562 whole cell lysate.
特記事項	<p>This product is a recombinant monoclonal antibody, which offers several advantages including:</p> <ul style="list-style-type: none">- High batch-to-batch consistency and reproducibility- Improved sensitivity and specificity- Long-term security of supply- Animal-free production <p>For more information see here.</p> <p>Our RabMAb[®] technology is a patented hybridoma-based technology for making rabbit monoclonal antibodies. For details on our patents, please refer to RabMAb[®] patents.</p>

製品の特性

製品の状態	Liquid
保存方法	Shipped at 4°C. Store at +4°C short term (1-2 weeks). Upon delivery aliquot. Store at -20°C long term. Avoid freeze / thaw cycle.
バッファー	pH: 7.20 Preservative: 0.01% Sodium azide Constituents: 59% PBS, 40% Glycerol (glycerin, glycerine), 0.05% BSA
精製度	Protein A purified

ポリ/モノ	モノクローナル
クローン名	EPR26362-65
アイソタイプ	IgG

アプリケーション

The Abpromise guarantee **Abpromise保証は、次のテスト済みアプリケーションにおけるab300485の使用に適用されます**
 アプリケーションノートには、推奨の開始希釈率がありますが、適切な希釈率につきましてはご検討ください。

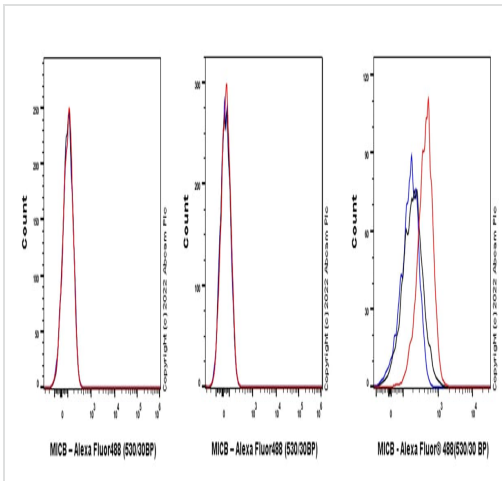
アプリケーション	Abreviews	特記事項
IP		1/30.
WB		1/1000.
Flow Cyt		1/500.
ICC/IF		1/50.

追加情報 Is unsuitable for IHC-P.

ターゲット情報

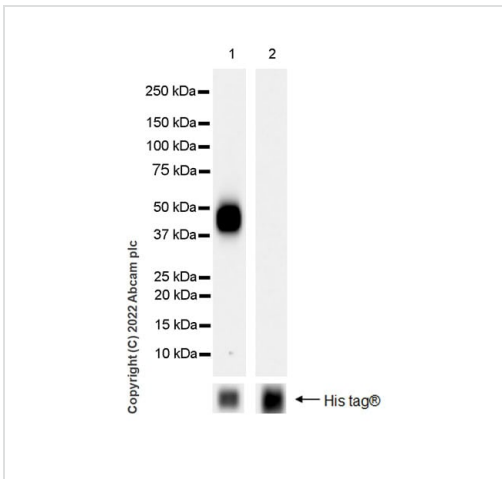
機能	Seems to have no role in antigen presentation. Acts as a stress-induced self-antigen that is recognized by gamma delta T cells. Ligand for the KLRK1/NKG2D receptor. Binding to KLRK1 leads to cell lysis.
組織特異性	Widely expressed with the exception of the central nervous system where it is absent. Expressed in many, but not all, epithelial tumors of lung, breast, kidney, ovary, prostate and colon. In hepatocellular carcinomas, expressed in tumor cells but not in surrounding non-cancerous tissue.
関連疾患	Genetic variations in MICA are a cause of susceptibility to rheumatoid arthritis (RA) [MIM:180300]. It is a systemic inflammatory disease with autoimmune features and a complex genetic component. It primarily affects the joints and is characterized by inflammatory changes in the synovial membranes and articular structures, widespread fibrinoid degeneration of the collagen fibers in mesenchymal tissues, and by atrophy and rarefaction of bony structures. Note=The MICB*004 allele is associated with rheumatoid arthritis. Note=Genetic variation in MICB is associated with cytomegalovirus and herpes simplex virus I seropositivity and this may be associated with schizophrenia risk.
配列類似性	Belongs to the MHC class I family. MIC subfamily. Contains 1 Ig-like C1-type (immunoglobulin-like) domain.
翻訳後修飾	Proteolytically cleaved and released from the cell surface of tumor cells.
細胞内局在	Cell membrane. Binding to human cytomegalovirus glycoprotein UL16 causes sequestration in the endoplasmic reticulum.

画像



Flow Cytometry - Anti-MICB antibody [EPR26362-65] (AB300485)

Flow cytometric analysis of K562 (human chronic myelogenous leukemia lymphoblast, Right) cells labelling MICB with ab300485 at 1/500 dilution (Red) compared with a Rabbit monoclonal IgG (**ab172730**) (Black) isotype control and an unlabeled control (cells without incubation with primary antibody and secondary antibody) (Blue). Goat Anti-Rabbit IgG (Alexa Fluor[®] 488, **ab150081**) at 1/2000 dilution was used as the secondary antibody. Gated on viable cells. Negative control: 293T (left), Daudi (middle) (PMID: 28154561).



Western blot - Anti-MICB antibody [EPR26362-65] (AB300485)

All lanes : Anti-MICB antibody [EPR26362-65] (ab300485) at 1/1000 dilution

Lane 1 : Purified his-tagged human MICB recombinant protein 10 ng

Lane 2 : Purified his-tagged human MICA recombinant protein 10 ng

Secondary

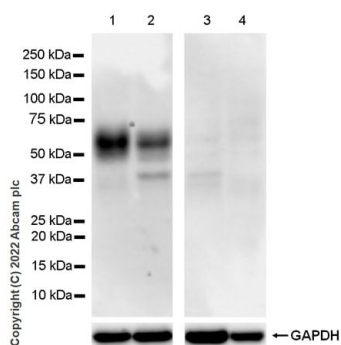
All lanes : Goat Anti-Rabbit IgG H&L (HRP) (**ab97051**) at 1/20000 dilution

Observed band size: 37-50 kDa

Blocking and diluting buffer and concentration: 5% NFD/MTBST.

This antibody does not cross-react with human MICA.

Exposure time: 7.75 seconds.



Western blot - Anti-MICB antibody [EPR26362-65] (AB300485)

All lanes : Anti-MICB antibody [EPR26362-65] (ab300485) at 1/1000 dilution

Lane 1 : K-562 (human chronic myelogenous leukemia lymphoblast) whole cell lysate

Lane 2 : U266B1 (human multiple myeloma B lymphocyte) whole cell lysate

Lane 3 : Daudi (human Burkitts lymphoma lymphoblast) whole cell lysate

Lane 4 : 293T (human embryonic kidney epithelial cell) whole cell lysate

Lysates/proteins at 40 µg per lane.

Secondary

All lanes : Goat Anti-Rabbit IgG H&L (HRP) ([ab97051](#)) at 1/20000 dilution

Observed band size: 37-61 kDa

Exposure time: 48 seconds

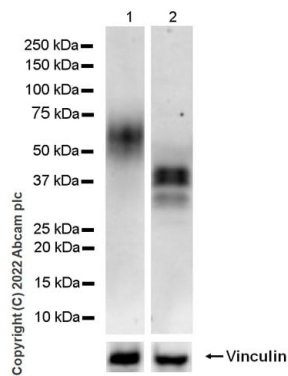
Blocking and diluting buffer and concentration: 5% NFDm/TBST.

The expression profile/ molecular weight observed is consistent with what has been described in the literature (PMID:10359807).

Negative controls: Daudi, 293T(PMID: 28154561).

This blot was developed using a high sensitivity ECL substrate.

Exposure time: 48 seconds.



Western blot - Anti-MICB antibody [EPR26362-65] (AB300485)

All lanes : Anti-MICB antibody [EPR26362-65] (ab300485) at 1/1000 dilution

Lane 1 : Untreated K562 (human chronic myelogenous leukemia lymphoblast), whole cell lysate

Lane 2 : K562 whole cell lysate treated with Protein Deglycosylation Mix II

Lysates/proteins at 15 µg per lane.

Secondary

All lanes : Goat Anti-Rabbit IgG H&L (HRP) ([ab97051](#)) at 1/20000 dilution

Observed band size: 37-61 kDa

Exposure time: 103 seconds

Blocking and diluting buffer and concentration: 5% NFD/MTBST.

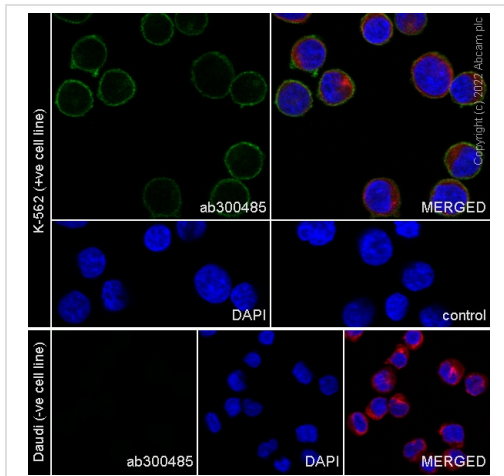
MICB is a glycoprotein of approximately 61 kDa and detected as two 37-42 kDa bands after treated with Protein Deglycosylation MIX II.

The bands beneath the target band (37 kDa) are reported as deglycosylated cleaved soluble MICB.

Molecular weight observed is consistent with described in the literature (PMID:19147769).

This blot was developed using a high sensitivity ECL substrate.

Exposure time: 103 seconds.

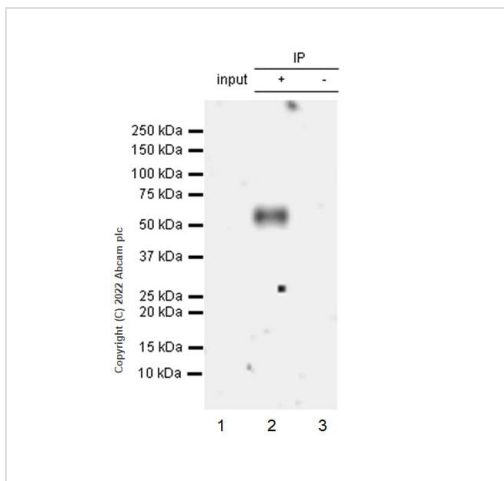


Immunocytochemistry/ Immunofluorescence - Anti-MICB antibody [EPR26362-65] (ab300485)

Immunofluorescent analysis of 4% paraformaldehyde-fixed, 0.1% TritonX-100 permeabilized K-562 (human chronic myelogenous leukemia lymphoblast) cells labelling MICB with ab300485 at 1/50 dilution (9.62 µg/ml), followed by **ab150081** Goat Anti-Rabbit IgG H&L (Alexa Fluor® 488) preadsorbed antibody at 1/1000 dilution (Green). Confocal image showing membranous staining in K-562 cell line. Negative control: No staining is observed in Daudi (PMID: 19404979).

ab195889 Anti-alpha Tubulin mouse monoclonal antibody - Microtubule Marker (Alexa Fluor® 594) was used to counterstain tubulin at 1/200 dilution (Red). The Nuclear counterstain was DAPI (Blue).

Secondary antibody only control: PBS was used instead of primary antibody followed by preadsorbed secondary antibody **ab150081** Goat Anti-Rabbit IgG H&L (Alexa Fluor® 488) at 1/1000 dilution.



Immunoprecipitation - Anti-MICB antibody [EPR26362-65] (AB300485)

MICB was immunoprecipitated from 0.35 mg K562 (human chronic myelogenous leukemia lymphoblast), whole cell lysate 10 µg with ab300485 at 1/30 dilution (2 µg in 0.35 mg lysates). Western blot was performed on the immunoprecipitate using ab300485 at 1/1000 dilution. VeriBlot for IP secondary antibody (HRP) (**ab131366**) was used at 1/5000 dilution.

Lane 1: K562 (human chronic myelogenous leukemia lymphoblast), whole cell lysate 10 µg (Input)

Lane 2: ab300485 IP in K562 whole cell lysate





Lane 3: Rabbit monoclonal IgG (**ab172730**) instead of ab300485 in K562 whole cell lysate

Blocking and dilution buffer and concentration: 5% NFDm/TBST.

Exposure time: 180 seconds.

Observed MW (kDa): 61.

Why choose a recombinant antibody?

 <p>Research with confidence Consistent and reproducible results</p>	 <p>Long-term and scalable supply Recombinant technology</p>
 <p>Success from the first experiment Confirmed specificity</p>	 <p>Ethical standards compliant Animal-free production</p>

Anti-MICB antibody [EPR26362-65] (AB300485)

Please note: All products are "FOR RESEARCH USE ONLY. NOT FOR USE IN DIAGNOSTIC PROCEDURES"

Our Abpromise to you: Quality guaranteed and expert technical support

- Replacement or refund for products not performing as stated on the datasheet
- Valid for 12 months from date of delivery
- Response to your inquiry within 24 hours
- We provide support in Chinese, English, French, German, Japanese and Spanish
- Extensive multi-media technical resources to help you
- We investigate all quality concerns to ensure our products perform to the highest standards

If the product does not perform as described on this datasheet, we will offer a refund or replacement. For full details of the Abpromise, please visit <https://www.abcam.co.jp/abpromise> or contact our technical team.

Terms and conditions

- Guarantee only valid for products bought direct from Abcam or one of our authorized distributors