

Anti-MHC class I + HLA A + HLA B antibody [EPR1394Y] ab134189

リコンビナント RabMAb[®]

★★★★★ **3 Abreviews** **17 References** **画像数 5**

製品の概要

製品名	Anti-MHC class I + HLA A + HLA B antibody [EPR1394Y]
製品の詳細	Rabbit monoclonal [EPR1394Y] to MHC class I + HLA A + HLA B
由来種	Rabbit
特異性	In our hands this antibody did not work in WB with mouse samples, but customer data suggest that reactivity in ICC/IF and IHC. The target shows high sequence homology with HLA-C and HLA-E, and it is possible that this antibody will detect these proteins too.
アプリケーション	適用あり: WB, IHC-P, Flow Cyt, ICC/IF
種交差性	交差種: Human
免疫原	Synthetic peptide within Human MHC class I. The exact sequence is proprietary.
ポジティブ・コントロール	WB: Raji, THP-1, and U-937 whole cell lysates. Human liver tissue lysate; ICC/IF: Raji cells; IHC-P: Human colon carcinoma tissue; Flow Cyt: Raji cells.
特記事項	<p>This product is a recombinant monoclonal antibody, which offers several advantages including:</p> <ul style="list-style-type: none">- High batch-to-batch consistency and reproducibility- Improved sensitivity and specificity- Long-term security of supply- Animal-free production <p>For more information see here.</p> <p>Our RabMAb[®] technology is a patented hybridoma-based technology for making rabbit monoclonal antibodies. For details on our patents, please refer to RabMAb[®] patents.</p> <p>Rat: We have preliminary internal testing data to indicate this antibody may not react with this species. Please contact us for more information.</p>

製品の特性

製品の状態	Liquid
保存方法	Shipped at 4°C. Store at +4°C short term (1-2 weeks). Upon delivery aliquot. Store at -20°C long term. Avoid freeze / thaw cycle.
バッファー	pH: 7.2

Preservative: 0.01% Sodium azide
Constituents: 59% PBS, 40% Glycerol (glycerin, glycerine), 0.5% BSA

精製度 Protein A purified
ポリモノ モノクローナル
クローン名 EPR1394Y
アイソタイプ IgG

アプリケーション

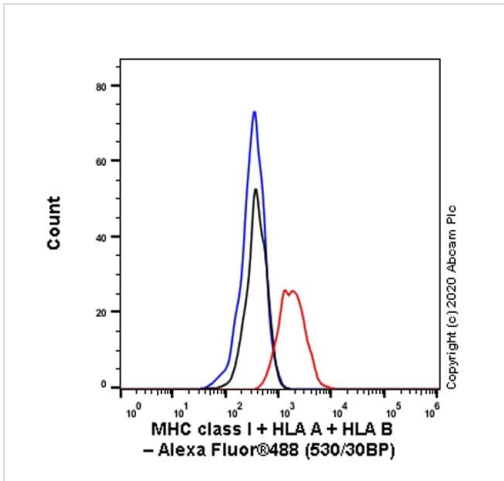
The Abpromise guarantee Abpromise保証は、次のテスト済みアプリケーションにおけるab134189の使用に適用されず
アプリケーションノートには、推奨の開始希釈率がありますが、適切な希釈率につきましてはご検討ください。

アプリケーション	Abreviews	特記事項
WB		1/2000. Detects a band of approximately 41 kDa (predicted molecular weight: 41 kDa). For unpurified use at 1/1000 - 1/10000.
IHC-P	★★★★☆ (2)	1/4000. Perform heat mediated antigen retrieval with Tris/EDTA buffer pH 9.0 before commencing with IHC staining protocol.
Flow Cyt		1/100. For unpurified use at 1/20 - 1/1000. ab172730 - Rabbit monoclonal IgG, is suitable for use as an isotype control with this antibody.
ICC/IF		1/500.

ターゲット情報

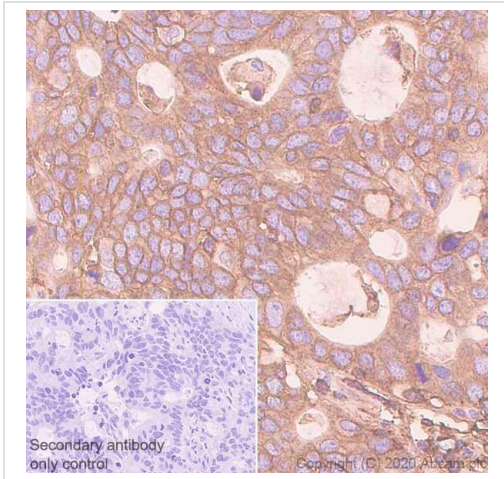
細胞内局在 MHC class I: Cell Membrane; Type I membrane protein. HLA B: Membrane.

画像



Flow Cytometry - Anti-MHC class I + HLA A + HLA B antibody [EPR1394Y] (ab134189)

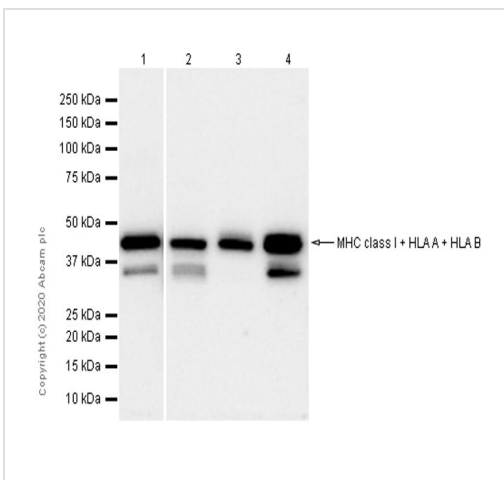
Flow Cytometry analysis of Raji (Human Burkitt's lymphoma B lymphocyte) cells, labeling MHC class I+HLA A+HLA B with Purified ab134189 at 1:100 dilution (10 µg/ml) (Red). Cells were fixed with / and permeabilised with /. A Goat anti rabbit IgG (Alexa Fluor® 488, **ab150077**) secondary antibody was used at 1:2000. Isotype control - Rabbit monoclonal IgG (Black). Unlabeled control - Cell without incubation with primary antibody and secondary antibody (Blue).



Immunohistochemistry (Formalin/PFA-fixed paraffin-embedded sections) - Anti-MHC class I + HLA A + HLA B antibody [EPR1394Y] (ab134189)

Immunohistochemistry (Formalin/PFA-fixed paraffin-embedded sections) analysis of human colon carcinoma tissue sections labeling MHC class I+HLA A+HLA B with purified ab134189 at 1/4000 dilution (0.26 µg/mL). Heat mediated antigen retrieval was performed using Bond™ Epitope Retrieval Solution 2 (pH 9.0). Rabbit specific IHC polymer detection kit HRP/DAB (**ab209101**) was used as the secondary antibody. Negative control: PBS instead of the primary antibody. Hematoxylin was used as a counterstain.

The immunostaining was performed on a Leica Biosystems BOND® RX instrument.



Western blot - Anti-MHC class I + HLA A + HLA B antibody [EPR1394Y] (ab134189)

All lanes : Anti-MHC class I + HLA A + HLA B antibody [EPR1394Y] (ab134189) at 1/2000 dilution (Purified)

Lane 1 : Raji (Human Burkitt's lymphoma B lymphocyte) whole cell lysate

Lane 2 : Human liver lysate

Lane 3 : THP-1 (Human monocytic leukemia monocyte) whole cell lysate

Lane 4 : U-937 (Human histiocytic lymphoma monocyte) whole cell lysate

Lysates/proteins at 20 µg per lane.

Secondary

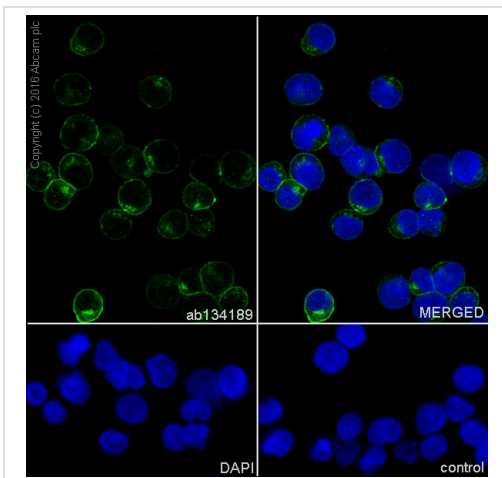
All lanes : Goat Anti-Rabbit IgG (HRP) with minimal cross-reactivity with human IgG at 1/2000 dilution

Predicted band size: 41 kDa

Observed band size: 44 kDa

Additional bands at: 35 kDa. We are unsure as to the identity of these extra bands.





Blocking/Diluting buffer: 5% NFD/MTBST



Immunocytochemistry/ Immunofluorescence analysis of Raji (human Burkitt's lymphoma B lymphocyte) cells labeling MHC class I+HLA A+HLA B with purified ab134189 at 1/500 dilution (4.3 µg/mL). Cells were fixed in 100% Methanol. Goat anti rabbit IgG (Alexa Fluor® 488, **ab150077**) was used as the secondary antibody at 1/1000 (2 µg/mL) dilution. DAPI (blue) was used as nuclear counterstain.

Immunocytochemistry/ Immunofluorescence - Anti-MHC class I + HLA A + HLA B antibody [EPR1394Y] (ab134189)

Why choose a recombinant antibody?

 <p>Research with confidence Consistent and reproducible results</p>	 <p>Long-term and scalable supply Recombinant technology</p>
 <p>Success from the first experiment Confirmed specificity</p>	 <p>Ethical standards compliant Animal-free production</p>

Anti-MHC class I + HLA A + HLA B antibody [EPR1394Y] (ab134189)

Please note: All products are "FOR RESEARCH USE ONLY. NOT FOR USE IN DIAGNOSTIC PROCEDURES"

Our Abpromise to you: Quality guaranteed and expert technical support

- Replacement or refund for products not performing as stated on the datasheet
- Valid for 12 months from date of delivery
- Response to your inquiry within 24 hours

- We provide support in Chinese, English, French, German, Japanese and Spanish
- Extensive multi-media technical resources to help you
- We investigate all quality concerns to ensure our products perform to the highest standards

If the product does not perform as described on this datasheet, we will offer a refund or replacement. For full details of the Abpromise, please visit <https://www.abcam.co.jp/abpromise> or contact our technical team.

Terms and conditions

- Guarantee only valid for products bought direct from Abcam or one of our authorized distributors