


Anti-Metnase antibody ab3823

5 References [画像数 1](#)

製品の概要

製品名	Anti-Metnase antibody
製品の詳細	Goat polyclonal to Metnase
由来種	Goat
アプリケーション	適用あり: WB
種交差性	交差種: Human
免疫原	Synthetic peptide corresponding to Human Metnase aa 650 to the C-terminus (C terminal). Database link: NP_006506.3  Run BLAST with  Run BLAST with
ポジティブ・コントロール	Daudi lysate.
特記事項	<p>The Life Science industry has been in the grips of a reproducibility crisis for a number of years. Abcam is leading the way in addressing this with our range of recombinant monoclonal antibodies and knockout edited cell lines for gold-standard validation. Please check that this product meets your needs before purchasing.</p> <p>If you have any questions, special requirements or concerns, please send us an inquiry and/or contact our Support team ahead of purchase. Recommended alternatives for this product can be found below, along with publications, customer reviews and Q&As</p>

製品の特性

製品の状態	Liquid
保存方法	Shipped at 4°C. Upon delivery aliquot and store at -20°C or -80°C. Avoid repeated freeze / thaw cycles.
バッファー	pH: 7.30 Preservative: 0.02% Sodium azide Constituents: 0.5% Tris, 0.5% BSA
精製度	Immunogen affinity purified
特記事項 (精製)	Purified from goat serum by ammonium sulphate precipitation followed by antigen affinity chromatography using the immunizing peptide.
ポリ/モノ	ポリクローナル
アイソタイプ	IgG

アプリケーション

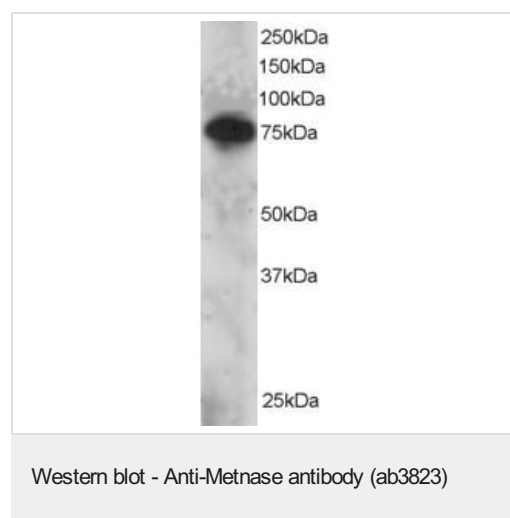
The Abpromise guarantee Abpromise保証は、 次のテスト済みアプリケーションにおけるab3823の使用に適用されます
アプリケーションノートには、推奨の開始希釈率がありますが、適切な希釈率につきましてはご検討ください。

アプリケーション	Abreviews	特記事項
WB		Use a concentration of 1 - 3 µg/ml. Detects a band of approximately 70-75 kDa. A 1 hour primary incubation is recommended for this product. Approx 70 - 75 kDa band seen in Daudi lysate.

ターゲット情報

機能	Histone methyltransferase that methylates 'Lys-4' and 'Lys-36' of histone H3, 2 specific tags for epigenetic transcriptional activation. Specifically mediates dimethylation of H3 'Lys-36'. Has sequence-specific DNA-binding activity and recognizes the 19-mer core of the 5'-terminal inverted repeats (TIRs) of the Hsmar1 element. Has DNA nicking activity. Has in vivo end joining activity and may mediate genomic integration of foreign DNA.
組織特異性	Widely expressed, with highest expression in placenta and ovary and lowest expression in skeletal muscle.
配列類似性	In the N-terminal section; belongs to the histone-lysine methyltransferase family. In the C-terminal section; belongs to the mariner transposase family. Contains 1 post-SET domain. Contains 1 pre-SET domain. Contains 1 SET domain.
ドメイン	The mariner transposase Hsmar1 region mediates DNA-binding. It has no transposase activity because the active site contains an Asn in position 610 instead of a Asp residue.
細胞内局在	Nucleus. Chromosome.

画像



ab3823 staining (2µg/ml) of Daudi lysate (RIPA buffer, 30µg total protein per lane). Primary incubated for 12 hours. Detected by western blot using chemiluminescence. ab3823 staining (2µg/ml) of Daudi lysate (RIPA buffer, 30µg total protein per lane). Primary incubated for 12 hours. Detected by western blot using chemiluminescence.

Please note: All products are "FOR RESEARCH USE ONLY. NOT FOR USE IN DIAGNOSTIC PROCEDURES"

Our Abpromise to you: Quality guaranteed and expert technical support

- Replacement or refund for products not performing as stated on the datasheet
- Valid for 12 months from date of delivery
- Response to your inquiry within 24 hours

- We provide support in Chinese, English, French, German, Japanese and Spanish
- Extensive multi-media technical resources to help you
- We investigate all quality concerns to ensure our products perform to the highest standards

If the product does not perform as described on this datasheet, we will offer a refund or replacement. For full details of the Abpromise, please visit <https://www.abcam.co.jp/abpromise> or contact our technical team.

Terms and conditions

- Guarantee only valid for products bought direct from Abcam or one of our authorized distributors