

Anti-Metabotropic Glutamate Receptor 5 antibody [EPR2425Y] - Low endotoxin, Azide free ab219374

リコンビナント **RabMAb**

5 References 画像数 5

製品の概要

製品名	Anti-Metabotropic Glutamate Receptor 5 antibody [EPR2425Y] - Low endotoxin, Azide free
製品の詳細	Rabbit monoclonal [EPR2425Y] to Metabotropic Glutamate Receptor 5 - Low endotoxin, Azide free
由来種	Rabbit
特異性	The Human species recommendation is based on the WB results. This antibody has been tested for IHC-P and IHC-Fr in Human samples and we obtain positive signal only in IHC-Fr. We do not recommend this antibody for IHC-P in Human samples.
アプリケーション	適用あり: WB, Electron Microscopy, Flow Cyt (Intra), IHC-P, IHC-Fr 適用なし: IP
種交差性	交差種: Mouse, Rat, Human
免疫原	Synthetic peptide. This information is proprietary to Abcam and/or its suppliers.
ポジティブ・コントロール	IHC: mouse brain lysate, rat and mouse cerebrum tissues. Flow Cyt (intra): SH-SY5Y cells
特記事項	ab219374 is the carrier-free version of ab76316 .

Our **carrier-free** antibodies are typically supplied in a PBS-only formulation, purified and free of BSA, sodium azide and glycerol. The carrier-free buffer and high concentration allow for increased conjugation efficiency.

This conjugation-ready format is designed for use with fluorochromes, metal isotopes, oligonucleotides, and enzymes, which makes them ideal for antibody labelling, functional and cell-based assays, flow-based assays (e.g. mass cytometry) and Multiplex Imaging applications.

Use our **conjugation kits** for antibody conjugates that are ready-to-use in as little as 20 minutes with <1 minute hands-on-time and 100% antibody recovery: available for fluorescent dyes, HRP, biotin and gold.

This product is compatible with the Maxpar[®] Antibody Labeling Kit from Fluidigm, without the need for antibody preparation. Maxpar[®] is a trademark of Fluidigm Canada Inc.

This product is a recombinant monoclonal antibody, which offers several advantages including:

- High batch-to-batch consistency and reproducibility
- Improved sensitivity and specificity
- Long-term security of supply

- Animal-free production

For more information [see here](#).

Our RabMAb[®] technology is a patented hybridoma-based technology for making rabbit monoclonal antibodies. For details on our patents, please refer to [RabMAb[®] patents](#).

Our **Low endotoxin, azide-free formats** have low endotoxin level (≤ 1 EU/ml, determined by the LAL assay) and are free from azide, to achieve consistent experimental results in functional assays.

製品の特性

製品の状態	Liquid
保存方法	Shipped at 4°C. Store at +4°C. Do Not Freeze.
バッファー	pH: 7.20 Constituent: PBS
キャリア・フリー	はい
精製度	Protein A purified
ポリ/モノ	モノクローナル
クローン名	EPR2425Y
アイソタイプ	IgG

アプリケーション

The Abpromise guarantee **Abpromise保証は、次のテスト済みアプリケーションにおけるab219374の使用に適用されます**
アプリケーションノートには、推奨の開始希釈率がありますが、適切な希釈率につきましてはご検討ください。

アプリケーション	Abreviews	特記事項
WB		Use at an assay dependent concentration.
Electron Microscopy		Use at an assay dependent concentration.
Flow Cyt (Intra)		Use at an assay dependent concentration. ab199376 - Rabbit monoclonal IgG, is suitable for use as an isotype control with this antibody.
IHC-P		Use at an assay dependent concentration. Perform heat mediated antigen retrieval before commencing with IHC staining protocol. Use of HRP-conjugated or polymerized HRP secondary antibodies, stronger signals have been found using the polymerized HRP secondary.
IHC-Fr		Use at an assay dependent concentration. This antibody has been tested for IHC-P and IHC-Fr in Human samples and we obtain positive signal only in IHC-Fr. We do not recommend this antibody for IHC-P in Human samples.

追加情報

Is unsuitable for IP.

ターゲット情報

機能

G-protein coupled receptor for glutamate. Ligand binding causes a conformation change that triggers signaling via guanine nucleotide-binding proteins (G proteins) and modulates the activity of down-stream effectors. Signaling activates a phosphatidylinositol-calcium second messenger system and generates a calcium-activated chloride current. Plays an important role in the regulation of synaptic plasticity and the modulation of the neural network activity.

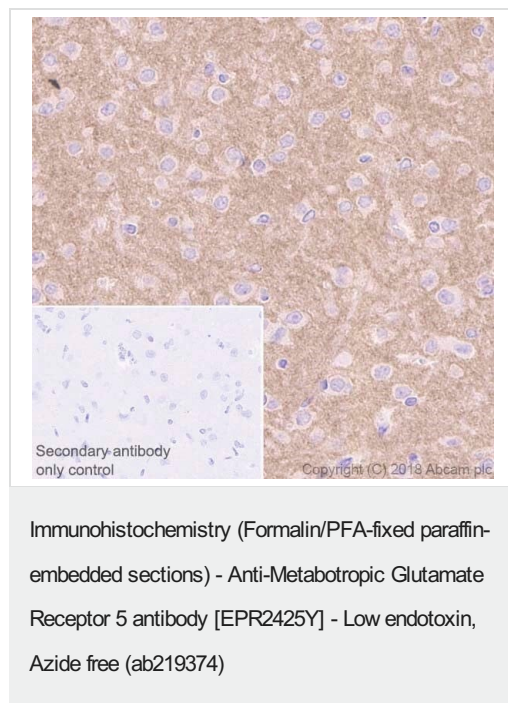
配列類似性

Belongs to the G-protein coupled receptor 3 family.

細胞内局在

Cell membrane.

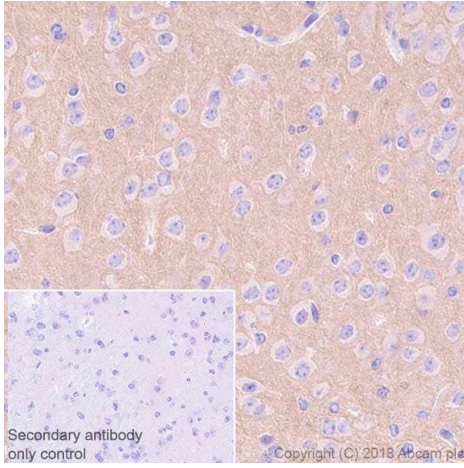
画像



This data was developed using the same antibody clone in a different buffer formulation containing PBS, BSA, glycerol, and sodium azide (**ab76316**)

Immunohistochemical analysis of Paraffin-embedded rat cerebrum tissue sections labeling Metabotropic Glutamate Receptor 5 with **ab76316** at 1/400 dilution followed by Goat Anti-Rabbit IgG H&L (HRP Polymer) secondary antibody. Sections were counterstained with Hematoxylin. Antigen retrieval was heat mediated using **ab93684** (Tris/EDTA buffer, pH 9.0).

Positive staining on rat cerebrum.

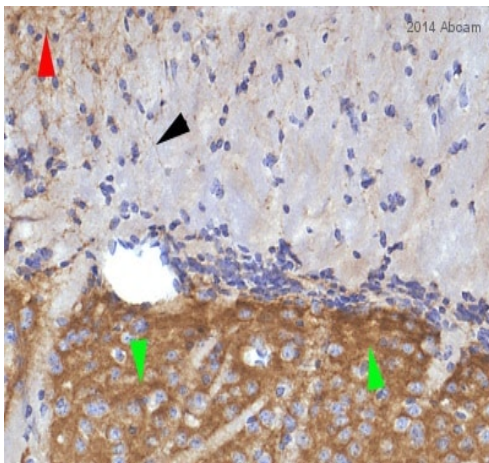


Immunohistochemistry (Formalin/PFA-fixed paraffin-embedded sections) - Anti-Metabotropic Glutamate Receptor 5 antibody [EPR2425Y] - Low endotoxin, Azide free (ab219374)

This data was developed using the same antibody clone in a different buffer formulation containing PBS, BSA, glycerol, and sodium azide ([ab76316](#))

Immunohistochemical analysis of Paraffin-embedded mouse cerebrum tissue sections labeling Metabotropic Glutamate Receptor 5 with [ab76316](#) at 1/400 dilution followed by Goat Anti-Rabbit IgG H&L (HRP Polymer) secondary antibody. Sections were counterstained with Hematoxylin. Antigen retrieval was heat mediated using [ab93684](#) (Tris/EDTA buffer, pH 9.0).

Positive staining on mouse cerebrum.

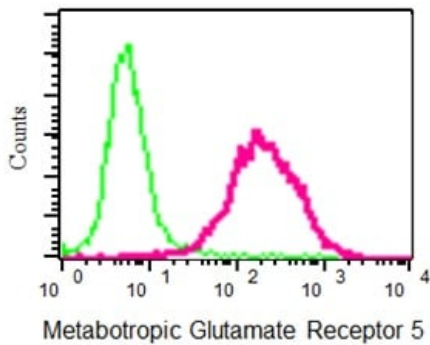


Immunohistochemistry (Formalin/PFA-fixed paraffin-embedded sections) - Anti-Metabotropic Glutamate Receptor 5 antibody [EPR2425Y] - Low endotoxin, Azide free (ab219374)

This image is courtesy of an Abreview submitted by Carl Hobbs.

This data was developed using the same antibody clone in a different buffer formulation containing PBS, BSA, glycerol, and sodium azide ([ab76316](#))

[ab76316](#) staining Metabotropic Glutamate Receptor 5 in mouse caudate putamen/ Corpus callosum by immunohistochemistry. Tissue was fixed with formaldehyde and citrate-mediated antigen retrieval was performed. Samples were blocked with 1% BSA for 10 minutes at 21°C, before incubation with the primary antibody (1/1000) for 2 hours at 21°C. A biotin conjugated goat anti-rabbit IgG secondary was used at 1/250.

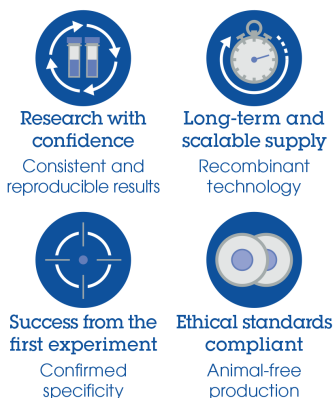


Flow Cytometry (Intracellular) - Anti-Metabotropic Glutamate Receptor 5 antibody [EPR2425Y] - Low endotoxin, Azide free (ab219374)

This data was developed using the same antibody clone in a different buffer formulation containing PBS, BSA, glycerol, and sodium azide (**ab76316**).

Intracellular flow cytometric analysis of permeabilized SH-SY5Y cells using **ab76316** (red) at 1/20 or a rabbit IgG (**ab172730**) as a negative control (green). The cells were permeabilized with 2% PFA and a goat anti-rabbit IgG FITC was used as the secondary at 1/150.

Why choose a recombinant antibody?



Anti-Metabotropic Glutamate Receptor 5 antibody [EPR2425Y] - Low endotoxin, Azide free (ab219374)

Please note: All products are "FOR RESEARCH USE ONLY. NOT FOR USE IN DIAGNOSTIC PROCEDURES"

Our Abpromise to you: Quality guaranteed and expert technical support

- Replacement or refund for products not performing as stated on the datasheet
- Valid for 12 months from date of delivery
- Response to your inquiry within 24 hours
- We provide support in Chinese, English, French, German, Japanese and Spanish
- Extensive multi-media technical resources to help you
- We investigate all quality concerns to ensure our products perform to the highest standards

If the product does not perform as described on this datasheet, we will offer a refund or replacement. For full details of the Abpromise, please visit <https://www.abcam.co.jp/abpromise> or contact our technical team.

Terms and conditions

- Guarantee only valid for products bought direct from Abcam or one of our authorized distributors