


Anti-Metabotropic Glutamate Receptor 5 antibody ab53090

★★★★★ 16 Abreviews 16 References 画像数 2

製品の概要

製品名	Anti-Metabotropic Glutamate Receptor 5 antibody
製品の詳細	Rabbit polyclonal to Metabotropic Glutamate Receptor 5
由来種	Rabbit
アプリケーション	適用あり: IHC-P, WB
種交差性	交差種: Mouse, Human 交差が予測される動物種: Rat 
免疫原	N-terminal synthetic peptide derived from human Metabotropic Glutamate Receptor 5.
ポジティブ・コントロール	WB: Mouse brain extracts. IHC-P: Human brain tissue.
特記事項	<p>The Life Science industry has been in the grips of a reproducibility crisis for a number of years. Abcam is leading the way in addressing this with our range of recombinant monoclonal antibodies and knockout edited cell lines for gold-standard validation. Please check that this product meets your needs before purchasing.</p> <p>If you have any questions, special requirements or concerns, please send us an inquiry and/or contact our Support team ahead of purchase. Recommended alternatives for this product can be found below, along with publications, customer reviews and Q&As</p>

製品の特性

製品の状態	Liquid
保存方法	Shipped at 4°C. Store at -20°C. Stable for 12 months at -20°C.
バッファー	pH: 7.40 Preservative: 0.02% Sodium azide Constituents: 50% Glycerol (glycerin, glycerine), 0.87% Sodium chloride, PBS
精製度	Immunogen affinity purified
特記事項 (精製)	ab53090 was affinity purified from rabbit antiserum by affinity chromatography using epitope specific immunogen.
ポリ/モノ	ポリクローナル
アイソタイプ	IgG

The Abpromise guarantee **Abpromise保証は、** 次のテスト済みアプリケーションにおけるab53090の使用に適用されます
 アプリケーションノートには、推奨の開始希釈率がありますが、適切な希釈率につきましてはご検討ください。

アプリケーション	Abreviews	特記事項
IHC-P	★★★★☆ (8)	1/50 - 1/100.
WB	★★☆☆☆ (1)	1/500 - 1/1000. Predicted molecular weight: 132 kDa.

ターゲット情報

機能	G-protein coupled receptor for glutamate. Ligand binding causes a conformation change that triggers signaling via guanine nucleotide-binding proteins (G proteins) and modulates the activity of down-stream effectors. Signaling activates a phosphatidylinositol-calcium second messenger system and generates a calcium-activated chloride current. Plays an important role in the regulation of synaptic plasticity and the modulation of the neural network activity.
配列類似性	Belongs to the G-protein coupled receptor 3 family.
細胞内局在	Cell membrane.

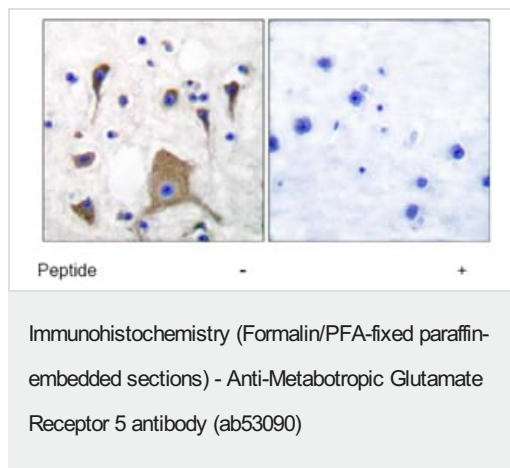
画像



All lanes : Anti-Metabotropic Glutamate Receptor 5 antibody (ab53090) at 1/300 dilution

Lane 1 : Mouse brain extracts
Lane 2 : Mouse brain extracts with blocking peptide

Predicted band size: 132 kDa
Observed band size: 100 kDa



Immunohistochemical analysis of paraffin embedded human brain tissue using ab53090 at 1/50 dilution, in the presence (right) and absence (left) of blocking peptide.

Please note: All products are "FOR RESEARCH USE ONLY. NOT FOR USE IN DIAGNOSTIC PROCEDURES"

Our Abpromise to you: Quality guaranteed and expert technical support

- Replacement or refund for products not performing as stated on the datasheet
- Valid for 12 months from date of delivery
- Response to your inquiry within 24 hours
- We provide support in Chinese, English, French, German, Japanese and Spanish
- Extensive multi-media technical resources to help you
- We investigate all quality concerns to ensure our products perform to the highest standards

If the product does not perform as described on this datasheet, we will offer a refund or replacement. For full details of the Abpromise, please visit <https://www.abcam.co.jp/abpromise> or contact our technical team.

Terms and conditions

- Guarantee only valid for products bought direct from Abcam or one of our authorized distributors