

# Anti-Metabotropic Glutamate Receptor 4/MGLUR4 antibody ab53088

★★★★★ [18 Abreviews](#) [10 References](#) [画像数 3](#)

### 製品の概要

製品名	Anti-Metabotropic Glutamate Receptor 4/MGLUR4 antibody
製品の詳細	Rabbit polyclonal to Metabotropic Glutamate Receptor 4/MGLUR4
由来種	Rabbit
アプリケーション	<b>適用あり:</b> ELISA, IHC-Fr, ICC/IF, IHC-P, WB
種交差性	<b>交差種:</b> Mouse, Rat, Chicken, Cat, Human
免疫原	Synthetic peptide corresponding to Human Metabotropic Glutamate Receptor 4/MGLUR4 (C terminal). Database link: <a href="#">Q14833</a>
特記事項	<p>The Life Science industry has been in the grips of a reproducibility crisis for a number of years. Abcam is leading the way in addressing this with our range of recombinant monoclonal antibodies and knockout edited cell lines for gold-standard validation. Please check that this product meets your needs before purchasing.</p> <p>If you have any questions, special requirements or concerns, please send us an inquiry and/or contact our Support team ahead of purchase. Recommended alternatives for this product can be found below, along with publications, customer reviews and Q&amp;As</p>

### 製品の特性

製品の状態	Liquid
保存方法	Shipped at 4°C. Store at -20°C. Stable for 12 months at -20°C.
バッファー	pH: 7.40 Preservative: 0.02% Sodium azide Constituents: 0.87% Sodium chloride, 50% Glycerol (glycerin, glycerine), PBS
精製度	Without Mg+2 and Ca+2 Immunogen affinity purified
ポリ/モノ	ポリクローナル
アイソタイプ	IgG

## アプリケーション

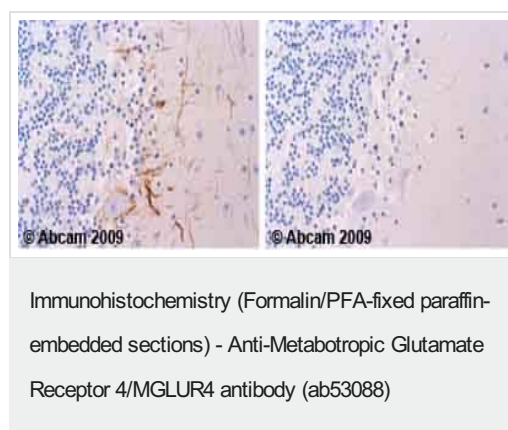
**The Abpromise guarantee** Abpromise保証は、次のテスト済みアプリケーションにおけるab53088の使用に適用されます  
アプリケーションノートには、推奨の開始希釈率がありますが、適切な希釈率につきましてはご検討ください。

アプリケーション	Abreviews	特記事項
ELISA		Use at an assay dependent concentration.
IHC-Fr	★★★★★ (5)	Use at an assay dependent concentration.
ICC/IF		Use a concentration of 5 µg/ml.
IHC-P	★★★★★ (4)	Use a concentration of 2 µg/ml. Perform heat mediated antigen retrieval before commencing with IHC staining protocol.
WB	★★★★★ (3)	1/500 - 1/1000. Detects a band of approximately 102 kDa (predicted molecular weight: 102 kDa).

## ターゲット情報

機能	Receptor for glutamate. The activity of this receptor is mediated by a G-protein that inhibits adenylate cyclase activity.
組織特異性	Strongly expressed in the cerebellum. Expressed at low levels in hippocampus, hypothalamus and thalamus. No expression detected in liver.
配列類似性	Belongs to the G-protein coupled receptor 3 family.
細胞内局在	Cell membrane.

## 画像

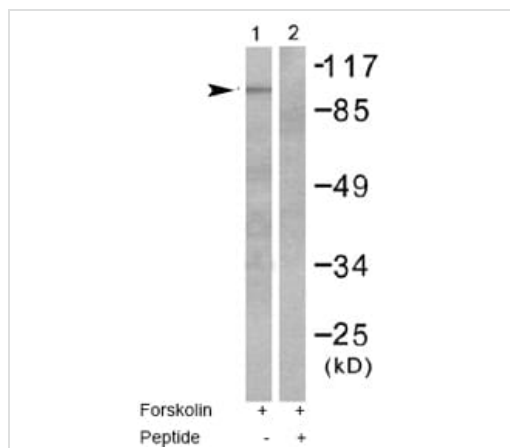


Ab53088 staining Human cerebellum. Staining is localised to the cell membrane.

Left panel: with primary antibody at 2 µg/ml. Right panel: isotype control.

Sections were stained using an automated system DAKO Autostainer Plus , at room temperature. Sections were rehydrated and antigen retrieved with the DAKO 3-in-1 antigen retrieval buffer EDTA pH 9.0 in a DAKO PT Link. Slides were peroxidase blocked in 3% H<sub>2</sub>O<sub>2</sub> in methanol for 10 minutes. They were then blocked with Dako Protein block for 10 minutes (containing casein 0.25% in PBS) then incubated with primary antibody for 20 minutes and detected with Dako Envision Flex amplification kit for 30 minutes. Colorimetric detection was completed with diaminobenzidine for 5 minutes. Slides were counterstained with Haematoxylin and coverslipped under DePeX. Please note that for manual staining we recommend to optimize the primary antibody concentration and

incubation time (overnight incubation), and amplification may be required.



Western blot - Anti-Metabotropic Glutamate Receptor 4/MGLUR4 antibody (ab53088)

**All lanes :** Anti-Metabotropic Glutamate Receptor 4/MGLUR4 antibody (ab53088) at 1/500 dilution

**Lane 1 :** 293 cell extracts, treated with Forskolin (40nM, 30mins)

**Lane 2 :** 293 cell extracts, treated with Forskolin (40nM, 30mins) with peptide

**Predicted band size:** 102 kDa

**Observed band size:** 102 kDa

Immunocytochemistry/ Immunofluorescence - Anti-Metabotropic Glutamate Receptor 4/MGLUR4 antibody (ab53088)

ICC/IF image of ab53088 stained HepG2 cells. The cells were 100% methanol fixed (5 min) and then incubated in 1%BSA / 10% normal goat serum / 0.3M glycine in 0.1% PBS-Tween for 1h to permeabilise the cells and block non-specific protein-protein interactions. The cells were then incubated with the antibody (ab53088, 5µg/ml) overnight at +4°C. The secondary antibody (green) was Alexa Fluor® 488 goat anti-rabbit IgG (H+L) used at a 1/1000 dilution for 1h. Alexa Fluor® 594 WGA was used to label plasma membranes (red) at a 1/200 dilution for 1h. DAPI was used to stain the cell nuclei (blue) at a concentration of 1.43µM.

**Please note:** All products are "FOR RESEARCH USE ONLY. NOT FOR USE IN DIAGNOSTIC PROCEDURES"

#### Our Abpromise to you: Quality guaranteed and expert technical support

- Replacement or refund for products not performing as stated on the datasheet
- Valid for 12 months from date of delivery
- Response to your inquiry within 24 hours
- We provide support in Chinese, English, French, German, Japanese and Spanish
- Extensive multi-media technical resources to help you
- We investigate all quality concerns to ensure our products perform to the highest standards

If the product does not perform as described on this datasheet, we will offer a refund or replacement. For full details of the Abpromise, please visit <https://www.abcam.co.jp/abpromise> or contact our technical team.

## **Terms and conditions**

---

- Guarantee only valid for products bought direct from Abcam or one of our authorized distributors