

### Anti-Menin antibody ab2605

★★★★☆ **1 Abreviews** **22 References** **画像数 4**

#### 製品の概要

製品名	Anti-Menin antibody
製品の詳細	Rabbit polyclonal to Menin
由来種	Rabbit
アプリケーション	<b>適用あり:</b> ICC/IF, ChIP, IHC-P, WB, IP
種交差性	<b>交差種:</b> Mouse, Human <b>交差が予測される動物種:</b> Rat, Horse, Guinea pig, Cow, Dog, Pig, Chimpanzee, Baboon, Rhesus monkey, Gorilla, Orangutan 
免疫原	Synthetic peptide (Human) - which represents a portion of the C-terminus of human MEN1.
特記事項	<p>The Life Science industry has been in the grips of a reproducibility crisis for a number of years. Abcam is leading the way in addressing this with our range of recombinant monoclonal antibodies and knockout edited cell lines for gold-standard validation. Please check that this product meets your needs before purchasing.</p> <p>If you have any questions, special requirements or concerns, please send us an inquiry and/or contact our Support team ahead of purchase. Recommended alternatives for this product can be found below, along with publications, customer reviews and Q&amp;As</p>

#### 製品の特性

製品の状態	Liquid
保存方法	Shipped at 4°C. Store at +4°C short term (1-2 weeks). Upon delivery aliquot. Store at -20°C. Avoid freeze / thaw cycle.
バッファー	pH: 7 Preservative: 0.1% Sodium azide Constituents: 0.021% PBS, 1.764% Sodium citrate, 1.815% Tris
特記事項(精製)	Affinity purified using the immunising peptide immobilized on solid support.
ポリ/モノ	ポリクローナル
アイソタイプ	IgG

#### アプリケーション

## The Abpromise guarantee

**Abpromise保証は、次のテスト済みアプリケーションにおけるab2605の使用に適用されず**

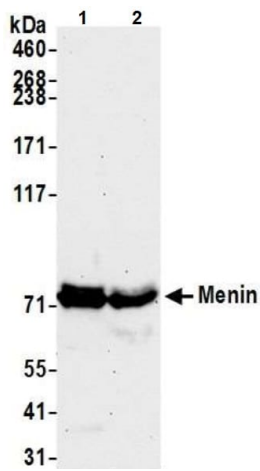
アプリケーションノートには、推奨の開始希釈率がありますが、適切な希釈率につきましてはご検討ください。

アプリケーション	Abreviews	特記事項
ICC/IF	★★★★★ (1)	Use at an assay dependent concentration.
ChIP		Use at an assay dependent concentration.
IHC-P		1/500 - 1/2000. Perform heat mediated antigen retrieval with citrate buffer pH 6 before commencing with IHC staining protocol.
WB		1/10000 - 1/25000. Detects a band of approximately 68 kDa (predicted molecular weight: 68 kDa). Can be blocked with <b>Recombinant Menin protein (ab114387)</b> .
IP		Use at 2-10 µg/mg of lysate.

## ターゲット情報

機能	Essential component of a MLL/SET1 histone methyltransferase (HMT) complex, a complex that specifically methylates 'Lys-4' of histone H3 (H3K4). Functions as a transcriptional regulator. Binds to the TERT promoter and represses telomerase expression. Plays a role in TGFB1-mediated inhibition of cell-proliferation, possibly regulating SMAD3 transcriptional activity. Represses JUND-mediated transcriptional activation on AP1 sites, as well as that mediated by NFκB subunit RELA. Positively regulates HOXC8 and HOXC6 gene expression. May be involved in normal hematopoiesis through the activation of HOXA9 expression (By similarity). May be involved in DNA repair.
組織特異性	Ubiquitous.
関連疾患	Defects in MEN1 are the cause of familial multiple endocrine neoplasia type I (MEN1) [MIM:131100]. Autosomal dominant disorder characterized by tumors of the parathyroid glands, gastro-intestinal endocrine tissue, the anterior pituitary and other tissues. Cutaneous lesions and nervous-tissue tumors can exist. Prognosis in MEN1 patients is related to hormonal hypersecretion by tumors, such as hypergastrinemia causing severe peptic ulcer disease (Zollinger-Ellison syndrome, ZES), primary hyperparathyroidism, and acute forms of hyperinsulinemia. Defects in MEN1 are the cause of familial isolated hyperparathyroidism (FIHP) [MIM:145000]; also known as hyperparathyroidism type 1 (HRPT1). FIHP is an autosomal dominant disorder characterized by hypercalcemia, elevated parathyroid hormone (PTH) levels, and uniglandular or multiglandular parathyroid tumors.
翻訳後修飾	Phosphorylated upon DNA damage, probably by ATM or ATR.
細胞内局在	Nucleus. Concentrated in nuclear body-like structures. Relocates to the nuclear matrix upon gamma irradiation.

## 画像



Western blot - Anti-Menin antibody - ChIP Grade (ab2605)

**All lanes** : Anti-Menin antibody (ab2605) at 0.04 µg/ml

**Lane 1** : TCMK-1 (Mouse kidney epithelial cell line) whole cell lysate

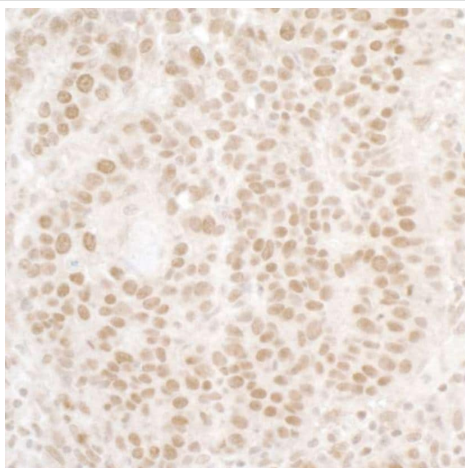
**Lane 2** : NIH/3T3 (Mouse embryo fibroblast cell line) whole cell lysate

Lysates/proteins at 50 µg per lane.

**Predicted band size:** 68 kDa

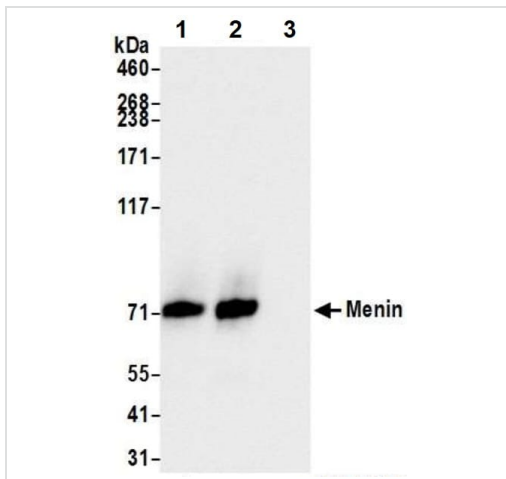
Samples in NETN lysis buffer.

Exposure time: 30 seconds.



Immunohistochemistry (Formalin/PFA-fixed paraffin-embedded sections) - Anti-Menin antibody - ChIP Grade (ab2605)

Immunohistochemical analysis of human lung carcinoma tissue labeling Menin with ab2605 at 1 µg/ml. Detection: DAB.



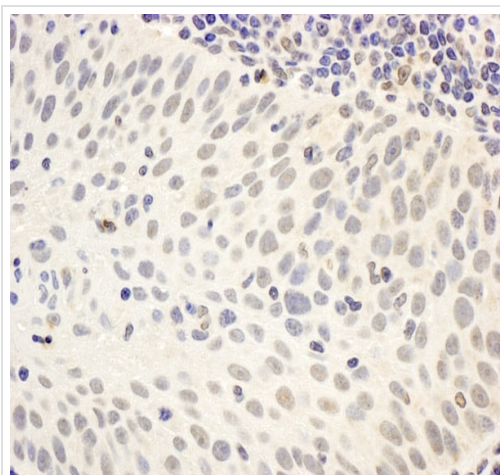
Immunoprecipitation - Anti-Menin antibody (ab2605)

Menin was immunoprecipitated from 1.0 mg of HEK-293T (Human epithelial cell line from embryonic kidney transformed with large T antigen) whole cell lysate with ab2605 at 6 µg/ml. Western blot was performed from the immunoprecipitate using **ab2506** at 0.04 µg/ml.

Lane 1 and 2: 20% of ab2605 IP in HEK-293T whole cell lysate

Lane 3: Control IgG

Exposure time: 1 second



Immunohistochemistry (Formalin/PFA-fixed paraffin-embedded sections) - Anti-Menin antibody - ChIP Grade (ab2605)

Immunohistochemical analysis of human breast carcinoma tissue labelling Menin with ab2605 at 1µg/ml. Detection: DAB.

**Please note:** All products are "FOR RESEARCH USE ONLY. NOT FOR USE IN DIAGNOSTIC PROCEDURES"

### Our Abpromise to you: Quality guaranteed and expert technical support

- Replacement or refund for products not performing as stated on the datasheet
- Valid for 12 months from date of delivery
- Response to your inquiry within 24 hours
- We provide support in Chinese, English, French, German, Japanese and Spanish
- Extensive multi-media technical resources to help you
- We investigate all quality concerns to ensure our products perform to the highest standards

If the product does not perform as described on this datasheet, we will offer a refund or replacement. For full details of the Abpromise, please visit <https://www.abcam.co.jp/abpromise> or contact our technical team.

## Terms and conditions

---

- Guarantee only valid for products bought direct from Abcam or one of our authorized distributors