




Anti-Melanophilin antibody ab2716

1 References [画像数 2](#)

製品の概要

製品名	Anti-Melanophilin antibody
製品の詳細	Goat polyclonal to Melanophilin
由来種	Goat
アプリケーション	適用あり: WB, ICC/IF
種交差性	交差種: Mouse 交差が予測される動物種: Rat 
免疫原	Synthetic peptide corresponding to Mouse Melanophilin aa 550 to the C-terminus (C terminal). Database link: Q91V27
	<div>  Run BLAST with </div> <div>  Run BLAST with </div>
特記事項	<p>The Life Science industry has been in the grips of a reproducibility crisis for a number of years. Abcam is leading the way in addressing this with our range of recombinant monoclonal antibodies and knockout edited cell lines for gold-standard validation. Please check that this product meets your needs before purchasing.</p> <p>If you have any questions, special requirements or concerns, please send us an inquiry and/or contact our Support team ahead of purchase. Recommended alternatives for this product can be found below, along with publications, customer reviews and Q&As</p>

製品の特性

製品の状態	Liquid
保存方法	Shipped at 4°C. Upon delivery aliquot and store at -20°C. Avoid freeze / thaw cycles.
バッファー	pH: 7.30 Preservative: 0.02% Sodium azide Constituents: Tris buffered saline, 0.5% BSA
精製度	Immunogen affinity purified
特記事項 (精製)	Purified from goat serum by ammonium sulphate precipitation followed by antigen affinity chromatography using the immunizing peptide.
ポリ/モノ	ポリクローナル
アイソタイプ	IgG

アプリケーション

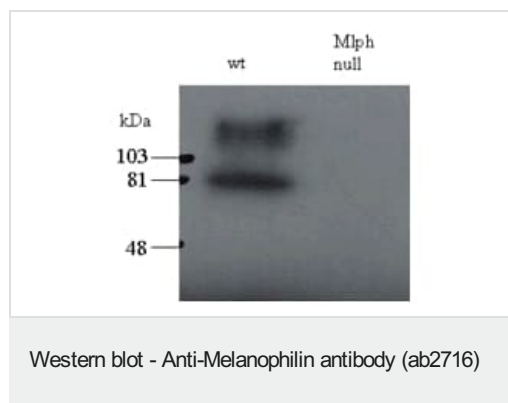
The Abpromise guarantee Abpromise保証は、 次のテスト済みアプリケーションにおけるab2716の使用に適用されます
アプリケーションノートには、推奨の開始希釈率がありますが、適切な希釈率につきましてはご検討ください。

アプリケーション	Abreviews	特記事項
WB		Use a concentration of 0.5 - 2 µg/ml. Predicted molecular weight: 65 kDa. 1 hour primary incubation is recommended for this product.
ICC/IF		Use a concentration of 0.5 µg/ml.

ターゲット情報

機能	Rab effector protein involved in melanosome transport. Serves as link between melanosome-bound RAB27A and the motor protein MYO5A.
関連疾患	Defects in MLPH are a cause of Griscelli syndrome type 3 (GS3) [MIM:609227]. GS3 is a rare autosomal recessive disorder characterized by pigmentary dilution of the skin and hair, the presence of large clumps of pigment in hair shafts, and an accumulation of melanosomes in melanocytes, without other clinical manifestations.
配列類似性	Contains 1 FYVE-type zinc finger. Contains 1 RabBD (Rab-binding) domain.
細胞内局在	Cytoplasm.

画像



All lanes : Anti-Melanophilin antibody (ab2716) at 0.5 µg/ml

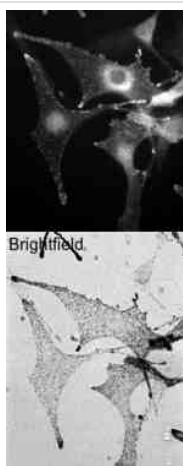
Lane 1 : total melanocyte PNS (200ug per lane) of wild-type

Lane 2 : total melanocyte PNS (200ug per lane) of leaden (Mlph null) mice

Predicted band size: 65 kDa

Observed band size: 81 kDa

ab2716 staining (0.5ug/ml) of total melanocyte PNS (200ug per lane) of wild-type and leaden (Mlph null) mice. The upper band may represent the stacking-separating gel interface.



Wild-type C57bl6 derived melanocytes were stained with ab2716 (0.5ug/ml) and detected with Alexa568 conjugated donkey anti-sheep second antibodies. Brightfield image shows melanosome distribution. Data kindly provided by A N Hume, Imperial College.

Immunocytochemistry/ Immunofluorescence - Anti-Melanophilin antibody (ab2716)

Please note: All products are "FOR RESEARCH USE ONLY. NOT FOR USE IN DIAGNOSTIC PROCEDURES"

Our Abpromise to you: Quality guaranteed and expert technical support

- Replacement or refund for products not performing as stated on the datasheet
- Valid for 12 months from date of delivery
- Response to your inquiry within 24 hours
- We provide support in Chinese, English, French, German, Japanese and Spanish
- Extensive multi-media technical resources to help you
- We investigate all quality concerns to ensure our products perform to the highest standards

If the product does not perform as described on this datasheet, we will offer a refund or replacement. For full details of the Abpromise, please visit <https://www.abcam.co.jp/abpromise> or contact our technical team.

Terms and conditions

- Guarantee only valid for products bought direct from Abcam or one of our authorized distributors